

2008 APR 17 AM 10:57

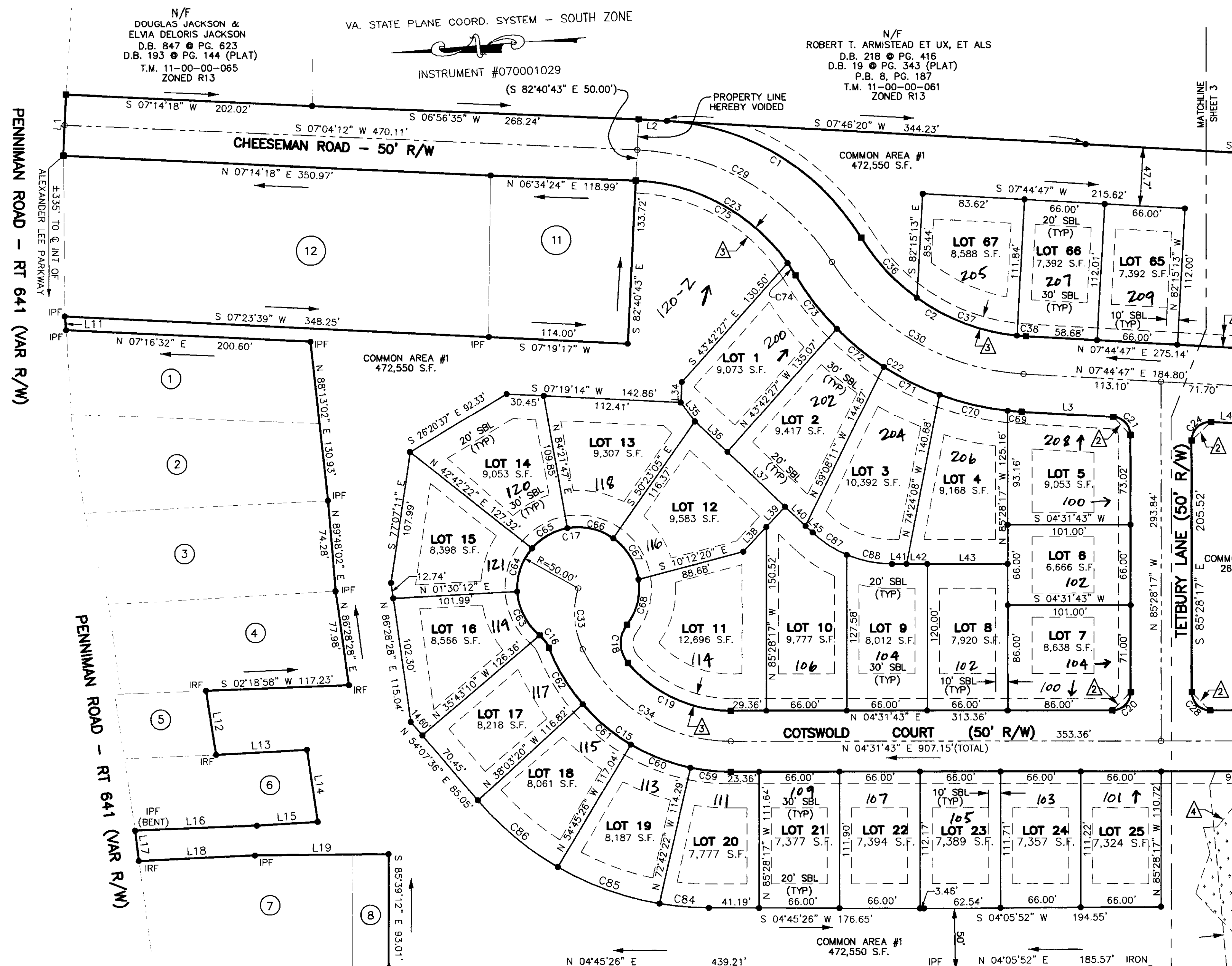
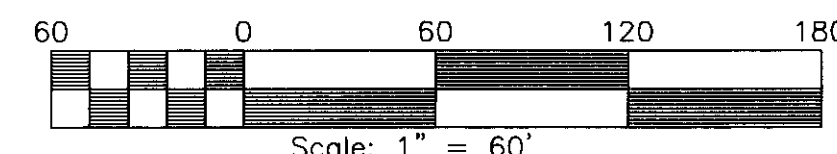
SUBDIVISION PLAT OF
HIGHGROVE
BRUTON DISTRICT, YORK COUNTY, VIRGINIA

DATE: SEPT. 4, 2007 SCALE: 1" = 60' JOB # 07-259
REV: FEB. 6, 2008

LandTech Resources, Inc.
Surveying • Engineering • GPS

201 Bulifants Boulevard, Suite A, Williamsburg, Virginia 23188
Phone: (757) 565-1677 Fax: (757) 565-0782
web: landtechresources.com

SHEET 2 OF 4



EASEMENT TABLE

- 1 20' DRAINAGE EASEMENT HEREBY CONVEYED TO YORK COUNTY (CENTERED ON STORMWATER PIPE)
- 2 VARIABLE WIDTH SIGHT EASEMENT HEREBY CONVEYED TO YORK COUNTY
- 3 10' LANDSCAPE PRESERVATION EASEMENT HEREBY CONVEYED TO YORK COUNTY
- 4 VARIABLE WIDTH WETLAND CONSERVATION EASEMENT HEREBY CONVEYED TO YORK COUNTY
- 5 20' SANITARY SEWER EASEMENT HEREBY CONVEYED TO YORK COUNTY (CENTERED ON SEWER LINE)
- 6 18' EMERGENCY ACCESS EASEMENT OF RIGHT OF WAY HEREBY CONVEYED TO YORK COUNTY
- 7 45' LANDSCAPE PRESERVATION EASEMENT HEREBY CONVEYED TO YORK COUNTY
- 8 EXISTING YORK COUNTY 20' DRAINAGE & UTILITY EASEMENT (P.B. 12, PGS. 56-57)



PLAT INSTRUMENT # 080007611

APPROVED:
YORK COUNTY BOARD OF SUPERVISORS

BY: Al Maddalena
PLAT APPROVING AGENT

DATE: 4/7/08

STATE OF VIRGINIA
COUNTY OF YORK
IN THE CLERK'S OFFICE OF THE CIRCUIT COURT FOR THE COUNTY OF YORK-POQUOSON THE 17th DAY OF April 2008

FRA THIS PLAT WAS PRESENTED AND ADMITTED TO RECORD AS INSTR. # 080007611 P.B.

T.M. TESTE: Ann S. Modibur 10:56 AM
CLERK

BY: Matthew H. Connolly

LEGEND
IRF = IRON ROD FOUND
IPF = IRON PIPE FOUND
■ CONCRETE MONUMENT TO BE SET
● IRON ROD TO BE SET (UNLESS OTHERWISE NOTED)
RPA = RESOURCE PROTECTION AREA
RMA = RESOURCE MANAGEMENT AREA

N/F
CHARLES WALLACE, JR.
D.B. 65 @ PG. 397
P.B. 7, PG. 122
T.M. 11-00-00-075
ZONED R13

N/F
ROBERT T. ARMISTEAD ET UX, ET ALS
D.B. 218 @ PG. 416
D.B. 19 @ PG. 343 (PLAT)
P.B. 8, PG. 187
T.M. 11-00-00-061
ZONED R13

N/F
DOUGLAS JACKSON &
ELVA DELORIS JACKSON
D.B. 847 @ PG. 623
D.B. 193 @ PG. 144 (PLAT)
T.M. 11-00-00-065
ZONED R13

VA. STATE PLANE COORD. SYSTEM - SOUTH ZONE

INSTRUMENT #070001029

PROPERTY LINE HEREBY VOIDED

PENNINGMAN ROAD - RT 641 (VAR R/W)

PENNINGMAN ROAD - RT 641 (VAR R/W)

MATCHLINE SHEET 3

MATCHLINE SHEET 3