

Approved:
York County Board Of Supervisors

BY: Al Maddalena
PLAT APPROVING AGENT
DATE: 6/12/08

State Of Virginia
County Of York

IN THE CLERK'S OFFICE OF THE CIRCUIT COURT FOR THE COUNTY OF YORK-POQUOSON,
THE 12th DAY OF June, 2008. THIS MAP WAS PRESENTED AND ADMITTED
TO RECORD AS THE LAW DIRECTS AS INSTRUMENT NUMBER 080012764
12:47 pm

TESTE: Lynn S. Mendibor
CLERK
BY: [Signature]

Legend

- D.B. DEED BOOK
- HWY. HIGHWAY
- INST. INSTRUMENT
- P.B. PLAT BOOK
- PG. PAGE
- RMA RESOURCE MANAGEMENT AREA
- RPA RESOURCE PROTECTION AREA
- S.F. SQUARE FEET
- IPF IRON PIPE FOUND
- IRF IRON ROD FOUND
- IRS IRON ROD SET
- PKF PK NAIL FOUND



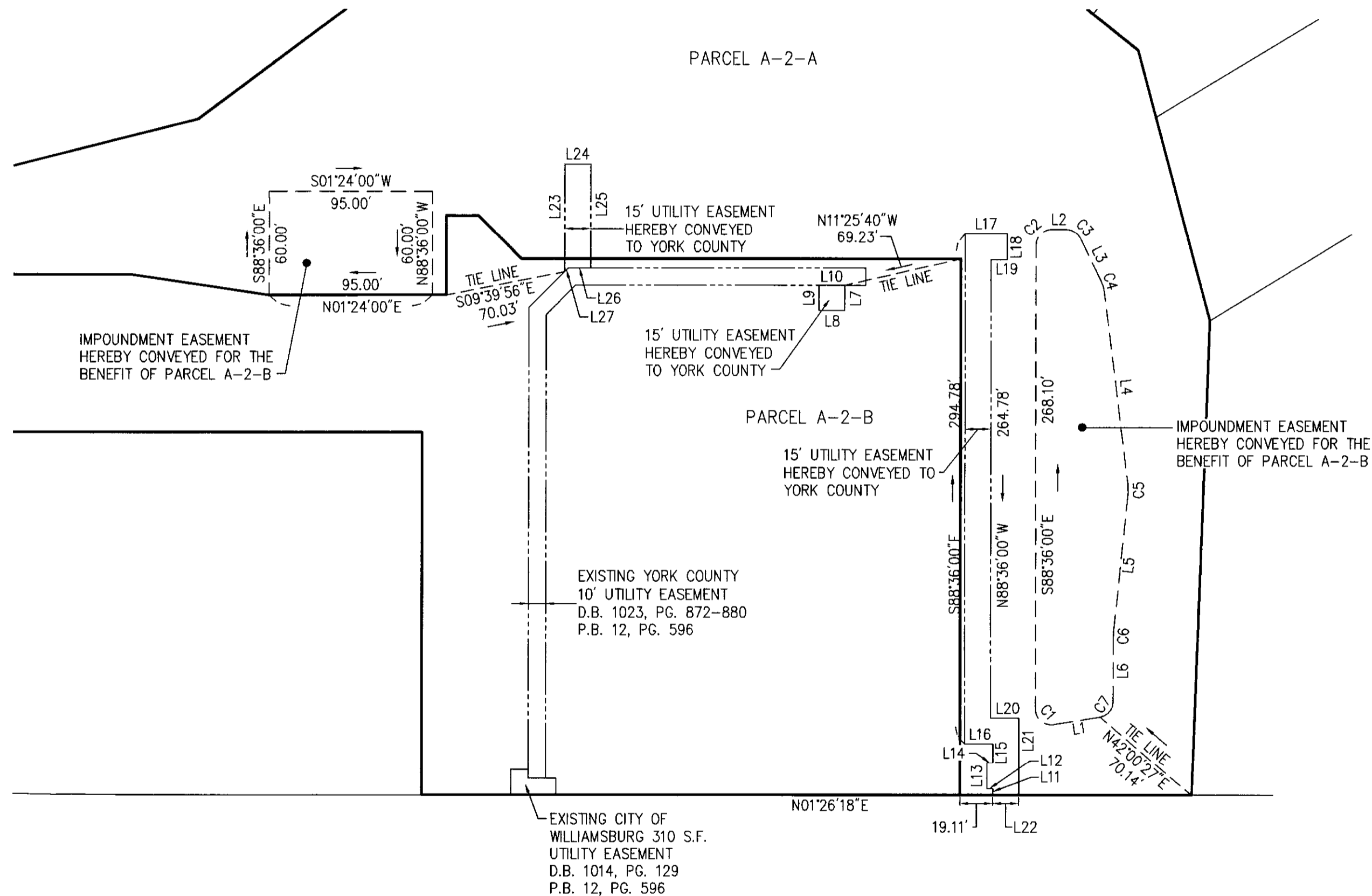
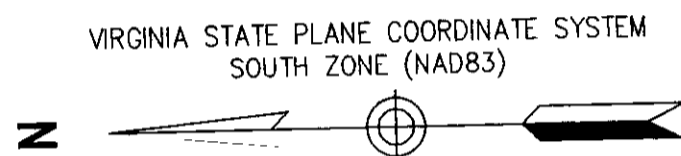
SUBDIVISION OF
THE PROPERTY OF
SHANTINATH, LLC
**BEING PARCEL A-2 OF THE
HORNSBY LAND CO. SUBDIVISION**
BRUTON MAGISTERIAL DISTRICT
COUNTY OF YORK, VIRGINIA

DATE: 06/25/07 SHEET 3 OF 3 SCALE: 1"=40'
PROJECT NO: 31339.02 DRAWN BY: DWP

VHB Vanasse Hangen Brustlin, Inc.
Transportation Land Development Environmental Services
11832 Rock Landing Drive, Suite 207
Newport News, Virginia 23606-4231
(757) 873-3386 • FAX (757) 873-0757

PLAT INSTRUMENT #080012764

REVISED: 12/5/07



| LINE | LENGTH | BEARING |
|------|---------|-------------|
| L1 | 27.54' | N07°31'51"W |
| L2 | 8.67' | S01°24'00"W |
| L3 | 26.87' | S65°26'11"W |
| L4 | 111.41' | S84°17'04"W |
| L5 | 80.23' | N82°42'40"W |
| L6 | 36.59' | N88°36'00"W |
| L7 | 14.50' | N88°33'42"W |
| L8 | 15.00' | N01°26'18"E |
| L9 | 14.50' | N88°33'42"W |
| L10 | 15.00' | S01°26'18"W |
| L11 | 4.01' | N88°36'00"W |
| L12 | 3.50' | S01°24'00"W |
| L13 | 15.00' | S88°36'00"E |
| L14 | 3.50' | S01°24'00"W |
| L15 | 11.05' | S88°36'00"E |
| L16 | 16.40' | N01°24'00"E |
| L17 | 24.40' | S01°24'00"W |
| L18 | 15.00' | N88°36'00"W |
| L19 | 9.40' | N01°24'00"E |
| L20 | 16.40' | S01°24'00"W |
| L21 | 45.07' | N88°36'00"W |
| L22 | 15.00' | N01°26'18"E |
| L23 | 62.21' | S88°33'42"E |
| L24 | 15.00' | S01°26'18"W |
| L25 | 60.00' | N88°33'42"W |
| L26 | 12.79' | N01°26'18"E |
| L27 | 3.13' | N43°33'42"W |



| NUMBER | RADIUS | DELTA | ARC LENGTH | TANGENT | CHORD | CHORD BEARING |
|--------|--------|-----------|------------|---------|--------|---------------|
| C1 | 9.00' | 98°55'51" | 15.54' | 10.52' | 13.68' | S41°56'05"W |
| C2 | 9.00' | 90°00'00" | 14.14' | 9.00' | 12.73' | N43°36'00"W |
| C3 | 9.00' | 64°02'11" | 10.06' | 5.63' | 9.54' | N33°25'06"E |
| C4 | 24.00' | 18°50'53" | 7.90' | 3.98' | 7.86' | N74°51'38"E |
| C5 | 24.00' | 13°00'15" | 5.45' | 2.74' | 5.44' | S89°12'48"E |
| C6 | 36.00' | 5°53'19" | 3.70' | 1.85' | 3.70' | N85°39'20"W |
| C7 | 9.00' | 81°04'09" | 12.73' | 7.70' | 11.70' | S48°03'55"E |

2008 JUN 13 PM 12:48