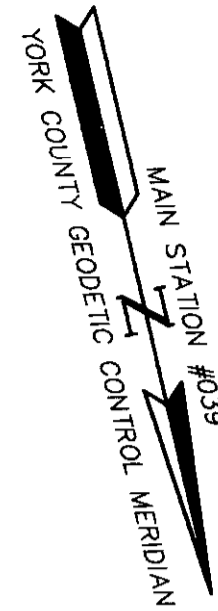


LINE	BEARING	LENGTH
A	N13°58'17"E	161.77'
B	S78°07'46"E	129.99'
C	N83°31'32"E	103.27'
D	S87°52'54"E	47.23'
E	S87°52'54"E	35.10'
F	S87°52'54"E	47.16'
G	N04°27'58"E	67.41'
H	N18°41'53"W	28.21'
I	N06°25'36"W	121.89'
J	N39°08'02"W	91.34'
K	N50°27'47"E	44.49'
L	N13°50'08"E	144.06'
M	N13°50'08"E	91.86'

LINE	BEARING	LENGTH
L1	N50°51'58"E	104.29'
L2	S50°39'41"E	69.98'
L3	S39°20'19"W	100.76'
L4	S20°13'34"E	6.81'
L5	S69°46'26"W	32.00'
L6	N39°08'02"W	7.62'
L7	S73°51'06"E	150.16'

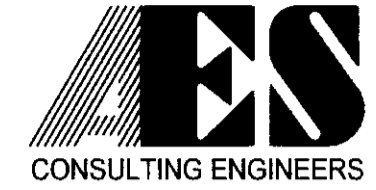
CURVE TABLE						
CURVE	DELTA	RADIUS	LENGTH	TANGENT	CHORD	CHORD BEARING
C1	19°02'23"	236.50'	78.59'	39.66'	78.23'	N29°36'51"W

AREA TABLE	
PARCEL 1 AREA	52.001 ACRES±
PARCEL 1A AREA	0.217 ACRES±
TOTAL AREA SUBDIVIDED	52.218 ACRES±



SUBDIVISION OF
**THE PROPERTY OF
 LANDMARK RESORT PROPERTIES OF VA, LLC
 (PUMP STATION LOT)**

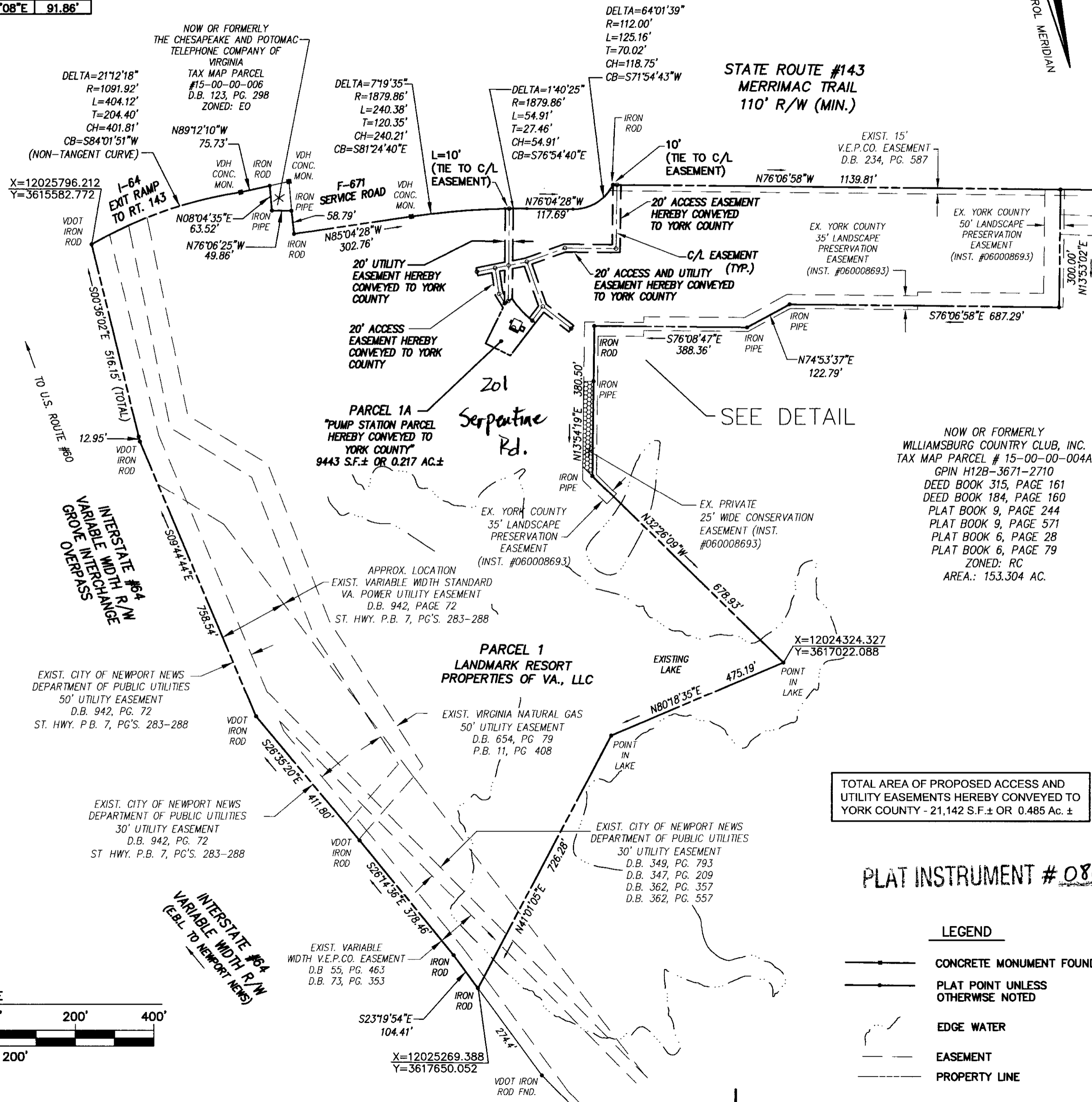
BRUTON MAGISTERIAL DISTRICT YORK COUNTY VIRGINIA
 DATE: 12/26/07 SCALE: 1" = 200' DRAWN: JFS



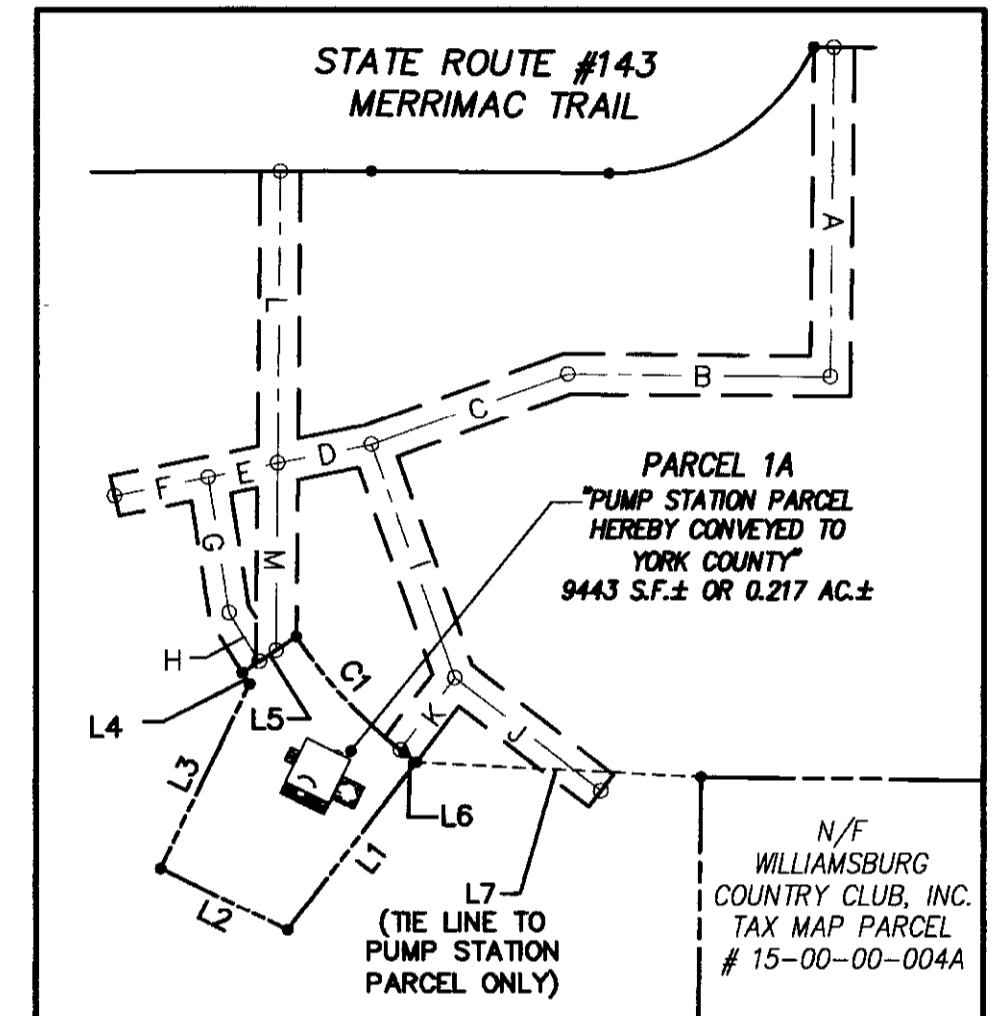
5248 Olde Towne Road, Suite 1
 Williamsburg, Virginia 23188
 (757) 253-0040
 Fax (757) 220-8994

JOB NO. 9348-01

SHEET 2 OF 2

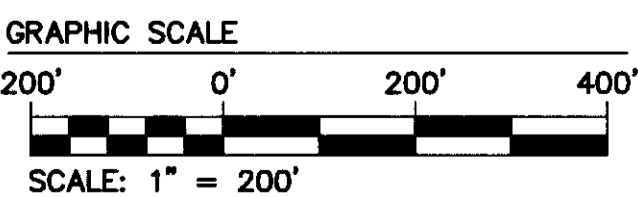


DETAIL N.T.S.



TOTAL AREA OF PROPOSED ACCESS AND UTILITY EASEMENTS HEREBY CONVEYED TO YORK COUNTY - 21,142 S.F.± OR 0.485 Ac. ±

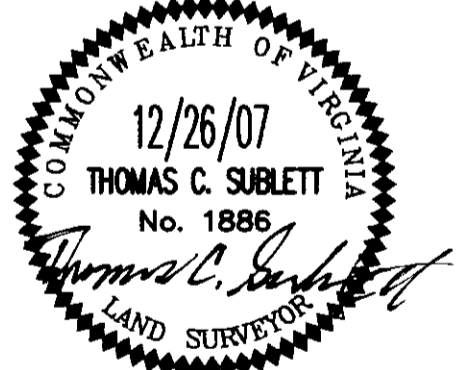
PLAT INSTRUMENT # 080019195



- LEGEND**
- CONCRETE MONUMENT FOUND
 - PLAT POINT UNLESS OTHERWISE NOTED
 - |— EDGE WATER
 - - - EASEMENT
 - — — PROPERTY LINE

APPROVED:
 YORK COUNTY BOARD OF SUPERVISORS
 BY: Al Maddalena PLAT APPROVING AGENT
 DATE: 8/15/08

STATE OF VIRGINIA
 COUNTY OF YORK
 IN THE CLERK'S OFFICE OF THE CIRCUIT COURT FOR THE COUNTY OF YORK-POQUOSON THE 15th DAY OF August, 2008 AT 12:25
 THIS MAP WAS PRESENTED AND ADMITTED TO RECORD AS THE LAW DIRECTS, AS INSTRUMENT NO. 080019195
 TESTE: Gyan S. Mendenhall CLERK
 BY: [Signature]



2008 AUG 15 08:12:25