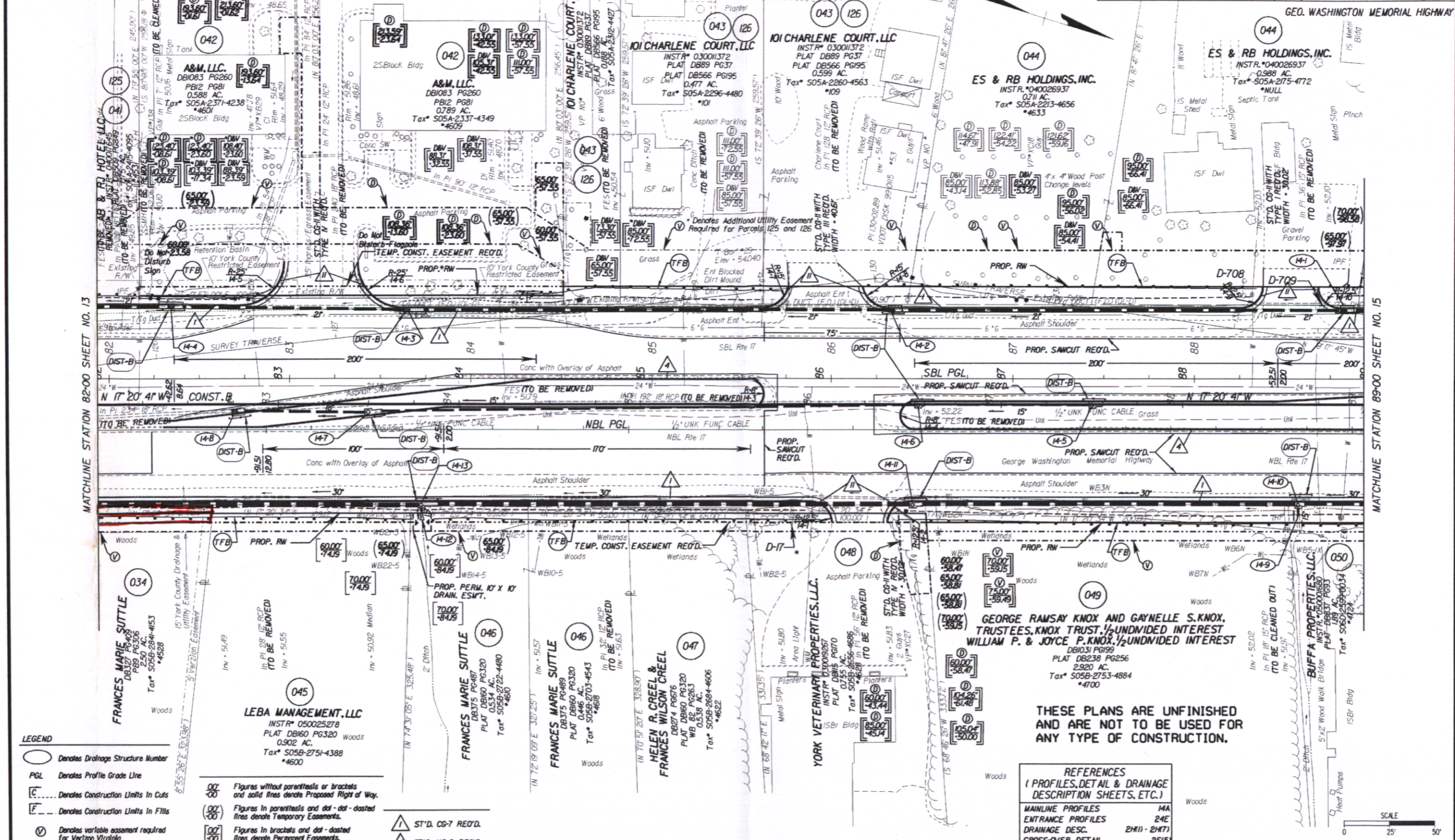


SURVEYED BY: BOB HARMON (757) 253-5071  
 SUPERVISED BY: J. K. HARMON, P.E. (757) 925-2406  
 DESIGNED BY: K. D. MCKINNA, P.E. (757) 925-3622  
 HAMPTON ROADS DISTRICT DESIGN UNIT

UTILITY OWNERS:  
 SEE SHEET 3 FOR DETAILS.



**LEGEND**

- Denotes Drainage Structure Number
- PGL Denotes Profile Grade Line
- Denotes Construction Limits In Cuts
- Denotes Construction Limits In Fills
- Ⓧ Denotes variable easement required for Verizon Virginia
- Ⓧ Denotes variable easement required for Dominion Virginia Power
- Ⓧ Figures without parenthesis or brackets and solid lines denote Proposed Right of Way.
- Ⓧ Figures in parenthesis and dot-dashed lines denote Temporary Easements.
- Ⓧ Figures in brackets and dot-dashed lines denote Permanent Easements.
- Ⓧ Figures in double brackets and dot-dashed lines denote Permanent Utility Easements.
- Ⓧ ST'D. CG-7 REQ'D.
- Ⓧ ST'D. MS-2 REQ'D.
- Ⓧ RAD. CG-7 REQ'D.

**NOTES**  
 See General Notes for E&S Legend

**REFERENCES**  
 (PROFILES, DETAIL & DRAINAGE DESCRIPTION SHEETS, ETC.)

MAINLINE PROFILES	14A
ENTRANCE PROFILES	24E
DRAINAGE DESC.	2(H) - 2(H7)
CROSS-OVER DETAIL	2(F5)

REVISED	12/09/05 02/06/06 05/29/07
STATE	VA.
FEDERAL AID PROJECT	77
ROUTE	6017-099-129, RW-201, C-501
STATE PROJECT	
SHEET NO.	14

08/29/2008 4