

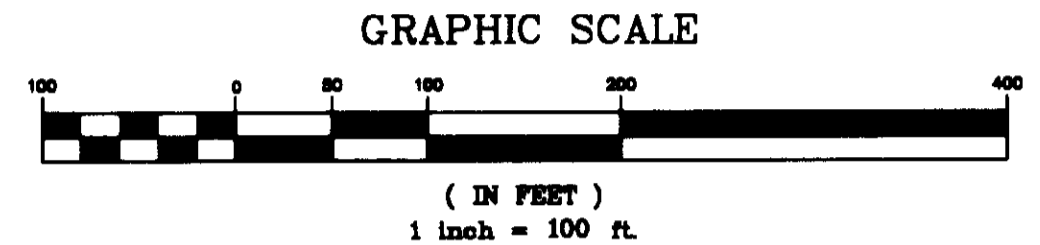
VICINITY MAP 1"=2000'

NOTES:

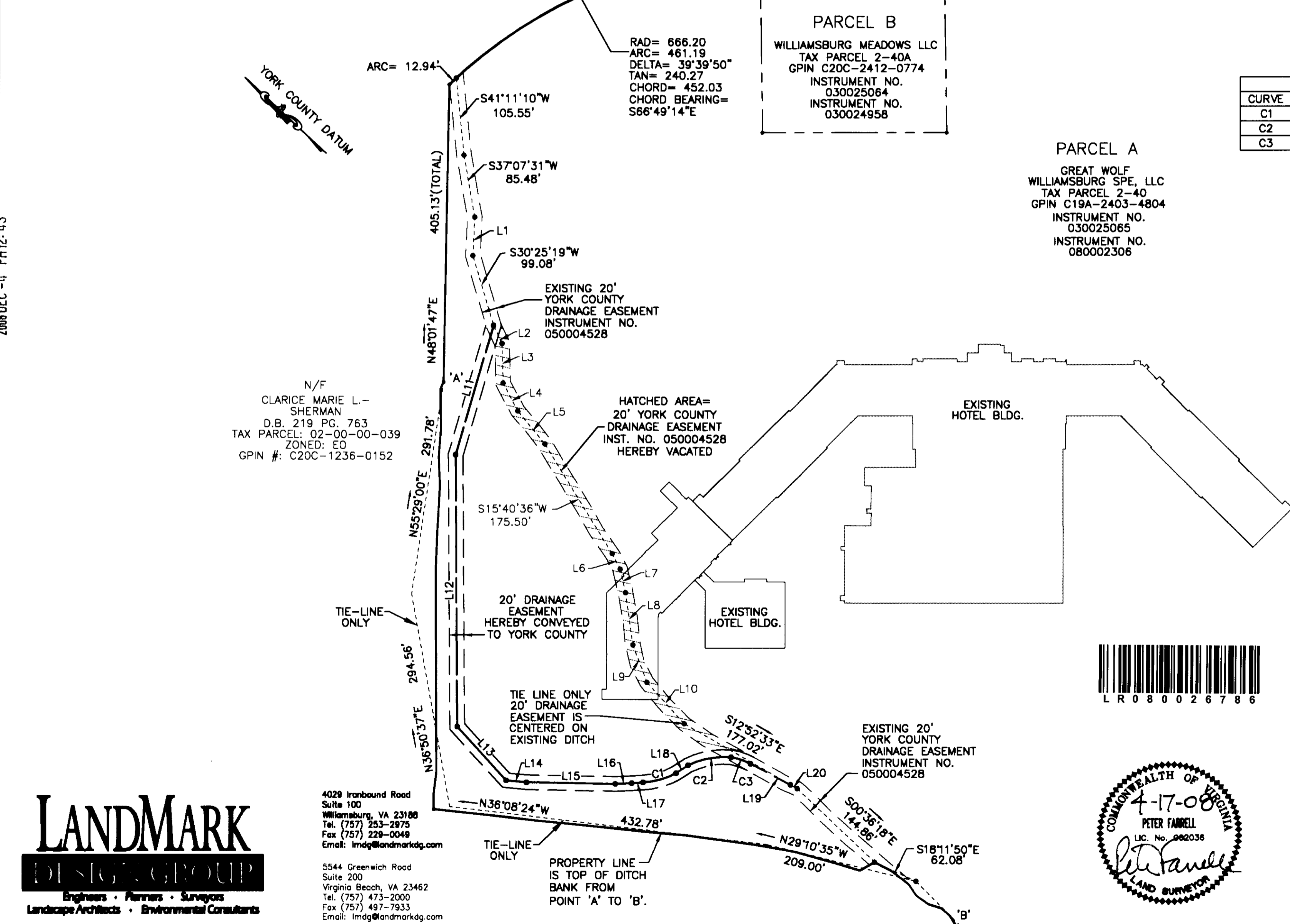
1. THE RECORDATION OF THIS PLAT SHALL OPERATE TO TRANSFER TO THE COUNTY OF YORK ANY EASEMENT INDICATED ON THE PLAT FOR WATERLINE TO CREATE A PUBLIC RIGHT-OF-PASSAGE OVER THE SAME UNLESS OTHERWISE NOTED ON THIS PLAT.
2. DRAINAGE AND UTILITY EASEMENTS CONVEYED TO THE COUNTY BY RECORDATION OF THIS PLAT SHALL BE EXCLUSIVE TO THE COUNTY, UNLESS OTHERWISE NOTED. CONVEYANCE OF SUCH EASEMENTS TO THE COUNTY ALSO INCLUDE: (I) THE COUNTY'S RIGHT OF INGRESS AND EGRESS OVER THE OWNER'S LAND ADJACENT TO THE EASEMENT AS NECESSARY TO INSPECT, MAINTAIN AND OPERATE THE COUNTY'S FACILITIES WITHIN THE EASEMENT AND (II) THE RIGHT OF THE COUNTY TO ASSIGN TO OTHERS, FROM TIME TO TIME, THE RIGHT TO LOCATE FACILITIES THEREIN SERVING THE PUBLIC, INCLUDING, BUT NOT LIMITED TO, WATER, ELECTRIC, TELEPHONE, COMMUNICATIONS, AND GAS UTILITY FACILITIES.

PLAT OF EASEMENT DEDICATION
 FROM
 GREAT WOLF
 WILLIAMSBURG SPE, LLC
 TO
 THE COUNTY OF YORK, VIRGINIA
 BRUTON DISTRICT
 YORK COUNTY, VIRGINIA
 DATE: 07/10/07
 REVISED 07/19/07
 REVISED 04/17/08
 SHEET 1 OF 1

EAST ROCHAMBEAU DRIVE



CURVE TABLE						
CURVE	LENGTH	RADIUS	TANGENT	CHORD	CHORD BEARING	DELTA
C1	47.11'	99.81'	24.00'	46.68'		27°02'48"
C2	60.05'	108.13'	30.82'	59.28'	N53°35'49"W	31°49'10"
C3	27.98'	87.65'	14.11'	27.86'	N24°16'00"W	18°17'18"



PARCEL B
 WILLIAMSBURG MEADOWS LLC
 TAX PARCEL 2-40A
 GPIN C20C-2412-0774
 INSTRUMENT NO. 030025064
 INSTRUMENT NO. 030024958

PARCEL A
 GREAT WOLF
 WILLIAMSBURG SPE, LLC
 TAX PARCEL 2-40
 GPIN C19A-2403-4804
 INSTRUMENT NO. 030025065
 INSTRUMENT NO. 080002306

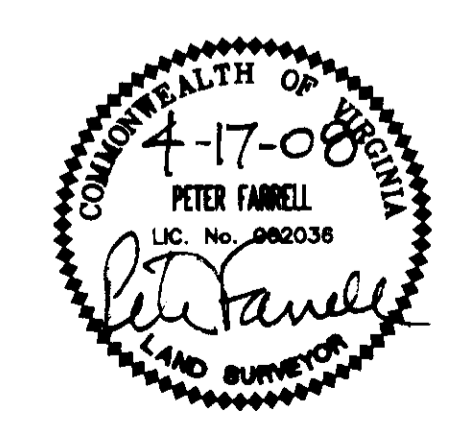
DRAINAGE EASEMENT

LINE TABLE		
LINE	LENGTH	BEARING
L1	52.70'	S49°32'25"W
L2	27.23'	S21°58'47"W
L3	53.78'	S45°24'06"W
L4	43.02'	S19°17'33"W
L5	57.94'	S07°35'30"W
L6	23.66'	S19°21'35"W
L7	33.24'	S34°15'43"W
L8	71.42'	S38°53'09"W
L9	54.35'	S26°22'20"W
L10	75.69'	S05°05'05"W
L11	183.19'	N63°16'50"E
L12	370.71'	N46°37'55"E
L13	99.26'	N04°51'45"E
L14	27.83'	N37°35'51"W
L15	120.39'	N41°54'22"W
L16	22.24'	N45°50'47"W
L17	15.39'	N47°13'53"W
L18	19.37'	N76°26'49"W
L19	61.07'	S15°07'21"E
L20	10.75'	S12°52'33"E

N/F
 CLARICE MARIE L.-
 SHERMAN
 D.B. 219 PG. 763
 TAX PARCEL: 02-00-00-039
 ZONED: EO
 GPIN #: C20C-1236-0152

HATCHED AREA=
 20' YORK COUNTY
 DRAINAGE EASEMENT
 INST. NO. 050004528
 HEREBY VACATED

EXISTING 20'
 YORK COUNTY
 DRAINAGE EASEMENT
 INSTRUMENT NO.
 050004528



APPROVED:
 YORK COUNTY BOARD OF SUPERVISORS
 BY: *[Signature]*
 PLAT APPROVING AGENT
 DATE: 12/3/08

STATE OF VIRGINIA
 COUNTY OF YORK
 IN THE CLERKS OFFICE OF THE CIRCUIT COURT FOR THE
 COUNTY OF YORK THE 4th DAY OF Dec 2008 THIS
 MAP WAS PRESENTED AND ADMITTED TO RECORD AS THE LAW
 DIRECTS AS INSTRUMENT NO. 080026786
 TESTE: *[Signature]* 12:43pm
 CLERK
 DATE: by: *[Signature]*, D.C.

LANDMARK
DESIGN GROUP
 Engineers • Planners • Surveyors
 Landscape Architects • Environmental Consultants

4029 Ironbound Road
 Suite 100
 Williamsburg, VA 23186
 Tel. (757) 253-2975
 Fax (757) 228-0049
 Email: lmdg@landmarkdg.com

5544 Greenwich Road
 Suite 200
 Virginia Beach, VA 23462
 Tel. (757) 473-2000
 Fax (757) 497-7933
 Email: lmdg@landmarkdg.com