

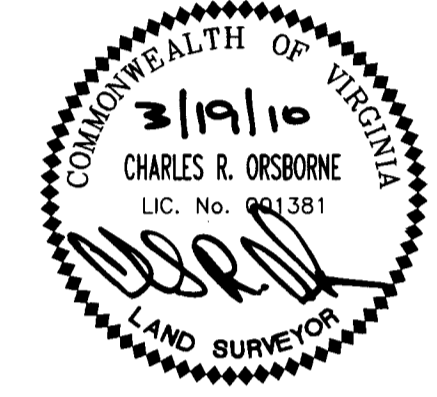
PLAT OF CORRECTION
BOUNDARY LINE ADJUSTMENT
BETWEEN THE PROPERTIES OF

THE DIGGES CO.,
A VIRGINIA CORPORATION
AND
C. LEWIS WALTRIP, II

BRUTON DISTRICT, YORK COUNTY, VIRGINIA
DATE: 07/30/09 SCALE: 1"=100'
SHEET 3 OF 3

LANDMARK
DESIGN GROUP

Engineers • Planners • Surveyors
Landscape Architects • Environmental Consultants
ONE COLUMBUS CENTER, SUITE 1100
VIRGINIA BEACH, VIRGINIA 23462
(757) 473-2000 FAX: (757) 497-7933



THE PURPOSE OF THIS PLAT OF CORRECTION IS TO
CORRECT THE L19 DISTANCE FROM 32.25 TO 35.25.
THE ORIGINAL SUBDIVISION PLAT IS RECORDED AS
INSTRUMENT NUMBER 090024719
THIS PLAT AMENDS SHEET 3

LINE TABLE		
LINE	LENGTH	BEARING
L1	36.92'	S28°49'54"W
L2	107.45'	S29°03'12"W
L3	89.94'	N48°06'18"W
L3A	107.23'	N48°06'18"W
L4	53.22'	S41°49'02"W
L5	27.46'	S28°31'36"W
L6	96.85'	S47°18'12"W
L7	85.25'	S27°59'17"W
L8	18.77'	S30°31'31"W
L9	84.63'	N02°32'13"E
L10	104.27'	N35°50'30"E
L11	60.84'	N69°15'53"W
L12	87.54'	N17°11'55"E
L13	85.15'	N68°40'58"E
L14	189.57'	N01°40'34"W
L15	176.52'	N37°47'57"W
L16	154.99'	N03°53'46"W
L17	9.78'	S41°49'02"W
L18	164.53'	S30°00'49"W
L19	35.25'	S33°38'43"W

VARIABLE WIDTH STRIP
HEREBY DEDICATED TO THE
COMMONWEALTH OF VIRGINIA,
DEPARTMENT OF
TRANSPORTATION,
FOR RIGHT-OF-WAY PURPOSES
2,091 S.F./0.0480 AC.

VARIABLE WIDTH STRIP
HEREBY DEDICATED TO THE
COMMONWEALTH OF VIRGINIA,
DEPARTMENT OF
TRANSPORTATION,
FOR RIGHT-OF-WAY PURPOSES
2,425 S.F./0.0557 AC.

PORTION OF EXISTING 10'
YORK COUNTY SANITARY
SEWER EASEMENT
(INSTR. NO 060008097)
HEREBY VACATED

FORMER
RIGHT-OF-WAY

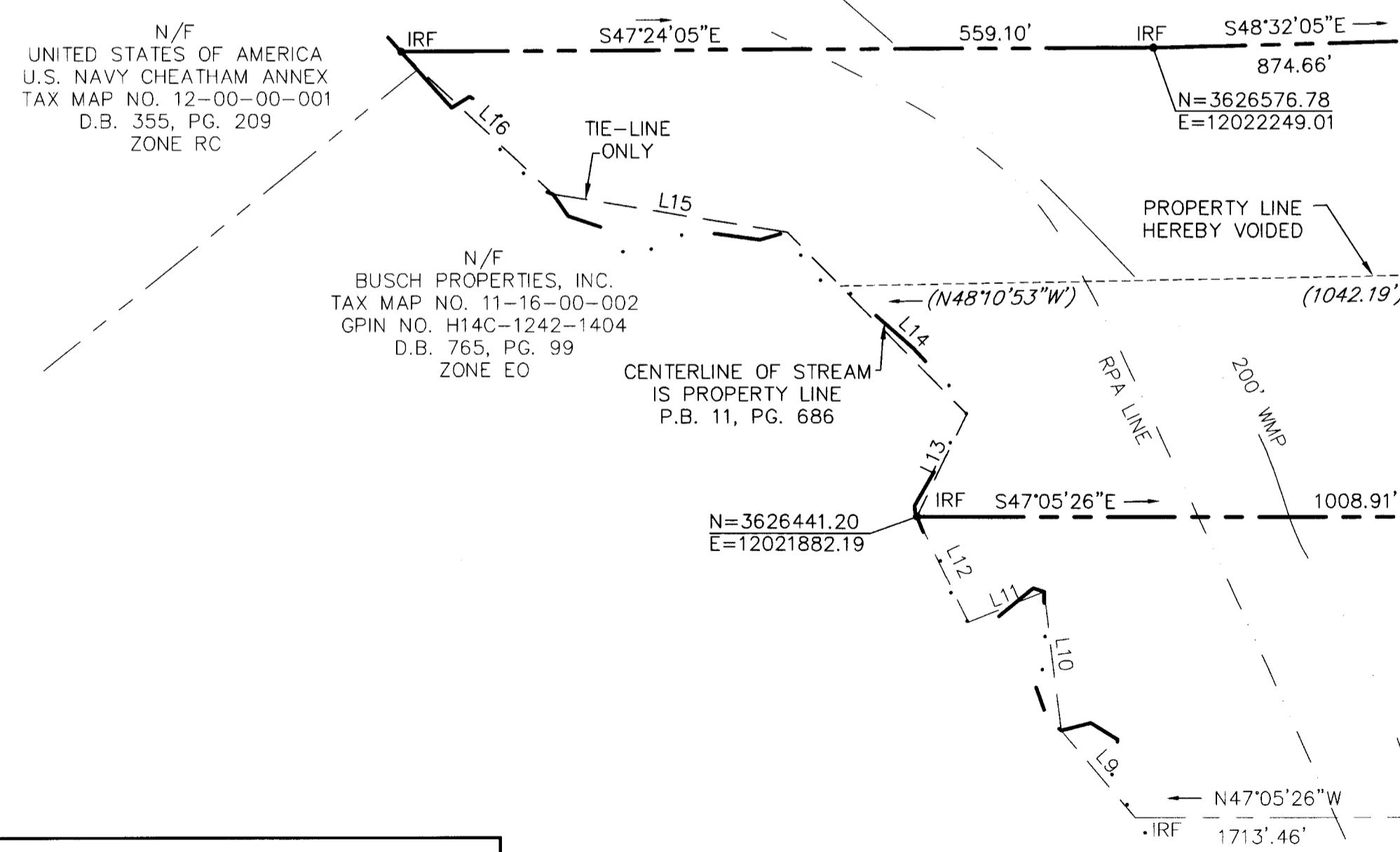
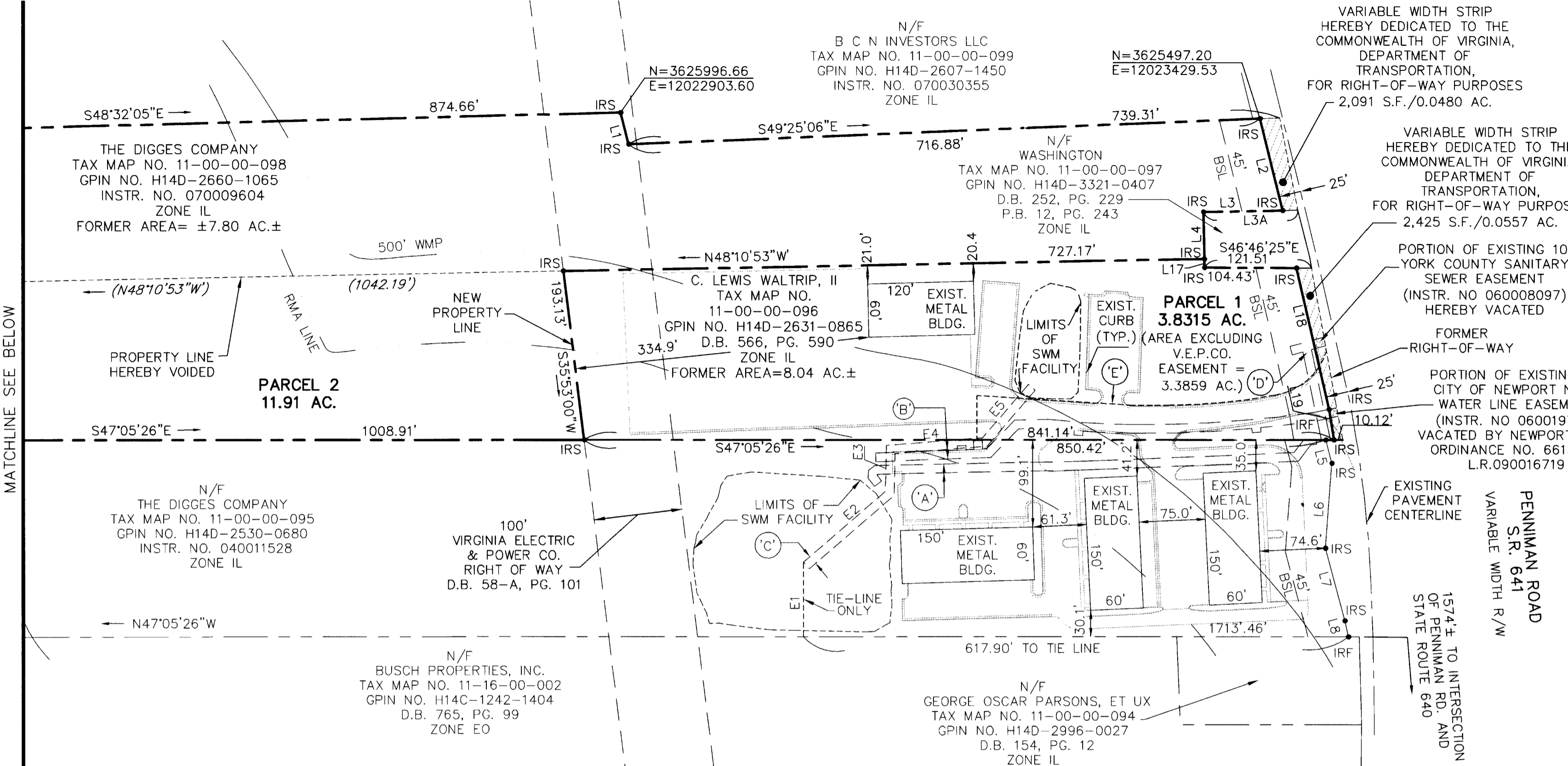
PORTION OF EXISTING 10'
CITY OF NEWPORT NEWS
WATER LINE EASEMENT
(INSTR. NO 060019750)
VACATED BY NEWPORT NEWS
ORDINANCE NO. 6613-09
L.R.090016719

PENNINGMAN ROAD
S.R. 641
VARIABLE WIDTH R/W
1574.4' TO INTERSECTION
OF PENNINGMAN RD. AND
STATE ROUTE 640

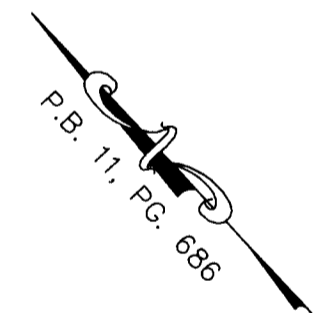
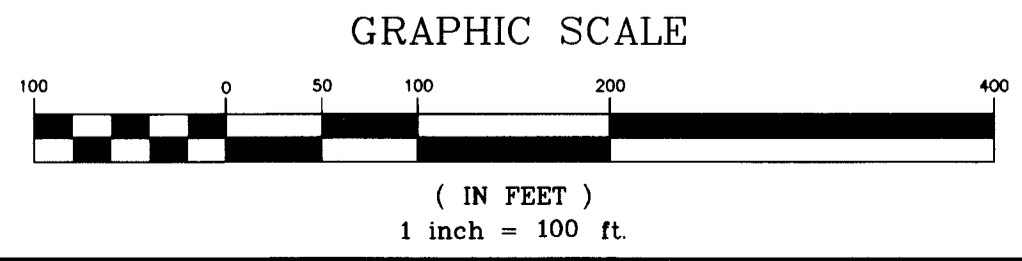
LEGEND

- RPA --- RESOURCE PROTECTION AREA
- RMA --- RESOURCE MANAGEMENT AREA
- 200' WMP --- WATERSHED MANAGEMENT AND PROTECTION
- SWM --- STORM WATER MANAGEMENT FACILITY
- BSL --- FRONT YARD BUILDING SET BACK LINE
- IRS • IRON ROD TO BE SET
- IRF • IRON ROD FOUND

- (A) EXISTING YORK COUNTY 10' SANITARY SEWER EASEMENT (INSTR. NO 060023119)
- (B) EXISTING 10' CITY OF NEWPORT NEWS WATERLINE EASEMENT (INSTR. NO 060019750)
- (C) 10' PRIVATE DRAINAGE EASEMENT HEREBY CONVEYED TO BENEFIT TAX MAP NO. 11-00-00-095 AND TAX MAP NO. 11-00-00-096
- (D) EXISTING YORK COUNTY 10' SANITARY SEWER EASEMENT (INSTR. NO. 060008097)
- (E) EXISTING INGRESS-EGRESS EASEMENT. (INSTR. NO. 060007077) HEREBY AMENDED TO BENEFIT PARCEL 2 (TM 11-00-00-098) IN ITS ENTIRETY



EASEMENT LINE TABLE		
LINE	LENGTH	BEARING
E1	84.97'	S42°54'34"W
E2	122.81'	S87°58'54"E
E3	52.36'	N44°19'39"E
E4	109.37'	S51°32'40"E
E5	80.13'	N83°29'49"E



MATCHLINE SEE ABOVE

MATCHLINE SEE BELOW

APPROVED:
YORK COUNTY BOARD OF SUPERVISORS
BY: *Al. Maddam*
PLAT APPROVING AGENT
DATE: *3/26/10*

STATE OF VIRGINIA, COUNTY OF YORK
IN THE CLERK'S OFFICE OF THE CIRCUIT COURT FOR THE COUNTY OF YORK-POQUOSON THE 20th DAY OF *March* 2010, THIS MAP WAS PRESENTED AND ADMITTED TO RECORD AS THE LAW DIRECTS AS 11:24 AM
INSTRUMENT NO. *100004934*
TESTE: *Lynn E. Mendibor*
CLERK

BY: *Lynn E. Mendibor, D.C.*