



VICINITY MAP

COPYRIGHT ADC THE MAP PEOPLE
 PERMITTED USE NO. 20907170
 VICINITY MAP: 1" = 2000'

NOTES:
 1. THE RECORDATION OF THIS PLAT SHALL OPERATE TO TRANSFER TO THE COUNTY OF YORK ANY EASEMENT INDICATED ON THE PLAT FOR ACCESS AND TO CREATE A PUBLIC RIGHT OF PASSAGE OVER THE SAME, UNLESS OTHERWISE NOTED ON THIS PLAT.

2. ANY EASEMENTS CONVEYED TO THE COUNTY BY RECORDATION OF THIS PLAT SHALL BE EXCLUSIVE TO THE COUNTY, UNLESS OTHERWISE NOTED. CONVEYANCE OF SUCH EASEMENTS TO THE COUNTY ALSO INCLUDE: (i) THE COUNTY'S RIGHT OF INGRESS AND EGRESS OVER THE OWNER'S LAND ADJACENT TO THE EASEMENT AS NECESSARY TO INSPECT, MAINTAIN AND OPERATE THE COUNTY'S FACILITIES WITHIN THE EASEMENT AND (ii) THE RIGHT OF THE COUNTY TO ASSIGN TO OTHERS, FROM TIME TO TIME, THE RIGHT TO LOCATE FACILITIES THEREIN SERVING THE PUBLIC, INCLUDING, BUT NOT LIMITED TO, WATER, ELECTRIC, TELEPHONE, COMMUNICATIONS, AND GAS UTILITY FACILITIES.

"WATER COUNTRY USA"
 PARCEL 2
 BUSCH ENTERTAINMENT CORP.
 GPIN 113A-0846-4200
 MAP #11-04-00-002
 D.B. 663, PG. 578
 P.B. 12, PG. 597-602

PARCEL 4
 GPIN H13B-3833-3806
 MAP #11-04-00-004
 INST. NO. 070011121

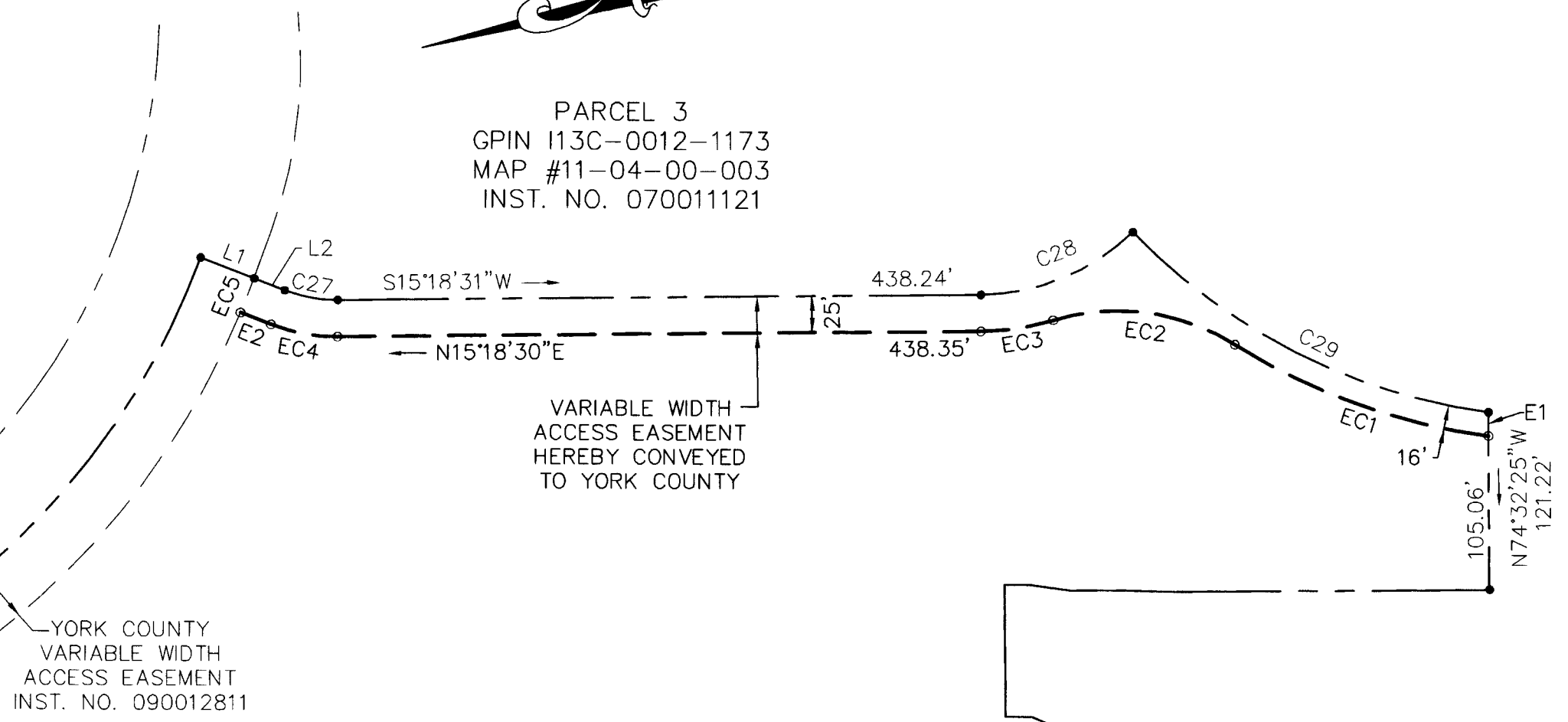
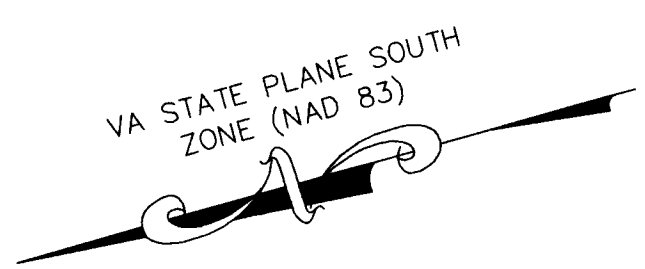
STATE ROUTE 199
 LIMITED ACCESS R/W
 VARIABLE WIDTH R/W

EASEMENT LINE TABLE		
LINE	LENGTH	BEARING
E1	16.16'	N74°32'25"W
E2	22.24'	N37°08'21"E

EASEMENT CURVE TABLE						
CURVE	LENGTH	RADIUS	TANGENT	CHORD	CHORD BEARING	DELTA
EC1	184.83'	431.00'	93.86'	183.42'	S35°33'39"W	24°34'15"
EC2	128.40'	150.00'	68.43'	124.51'	N23°19'29"E	49°02'36"
EC3	49.89'	176.02'	25.11'	49.72'	S06°55'18"W	16°14'16"
EC4	46.48'	122.00'	23.53'	46.20'	S26°13'26"W	21°49'50"
EC5	25.00'	497.48'	12.50'	25.00'	S52°58'21"E	2°52'47"

PROPERTY LINE TABLE		
LINE	LENGTH	BEARING
L1	39.02'	S37°08'21"W
L2	22.29'	S37°08'21"W

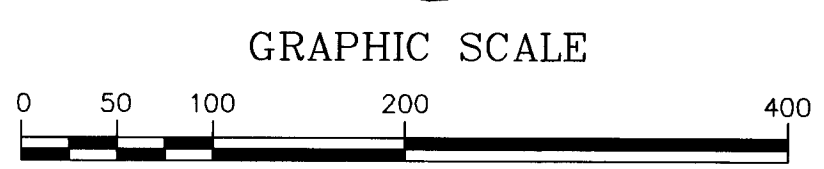
PROPERTY CURVE TABLE						
CURVE	LENGTH	RADIUS	TANGENT	CHORD	CHORD BEARING	DELTA
C27	36.96'	97.00'	18.71'	36.74'	S26°13'26"W	21°49'50"
C28	114.81'	151.02'	60.34'	112.06'	S06°44'13"E	43°33'19"
C29	276.20'	415.00'	143.43'	271.13'	S42°38'43"W	38°07'58"



PARCEL 3
 GPIN 113C-0012-1173
 MAP #11-04-00-003
 INST. NO. 070011121

PARCEL 5
 TARGET CORPORATION
 GPIN H13B-3832-3152
 MAP #11-04-00-005
 INST. NO. 070011121
 INST. NO. 070025139

PARCEL 3
 GPIN 113C-0012-1173
 MAP #11-04-00-003
 INST. NO. 070011121



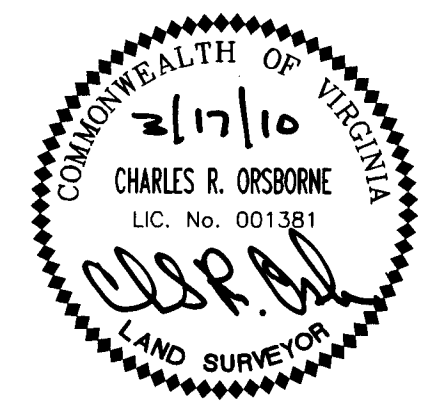
(IN FEET)
 1 inch = 100ft.

PLAT OF EASEMENT DEDICATION FROM TARGET CORPORATION TO THE COUNTY OF YORK, VIRGINIA
 PARCEL 5
 PHASE 1-A

BRUTON DISTRICT, YORK COUNTY, VIRGINIA
 DATE: 02/08/10 SCALE: 1"=100'



Engineers • Planners • Surveyors
 Landscape Architects • Environmental Consultants
 One Columbus Center Suite 1100
 Virginia Beach, VA 23462
 Tel. (757) 473-2000
 Email: lmdg@landmarkdg.com



APPROVED:
 YORK COUNTY BOARD OF SUPERVISORS

BY: *[Signature]*
 PLAT APPROVING AGENT

4-6-2010
 DATE:

STATE OF VIRGINIA, COUNTY OF YORK
 IN THE CLERK'S OFFICE OF THE CIRCUIT COURT FOR THE COUNTY OF YORK-POQUOSON THE 7th DAY OF *April* 2010, THIS MAP WAS PRESENTED AND ADMITTED TO RECORD AS THE LAW DIRECTS AS INSTRUMENT NO. *100005734*

TESTE: *Lynn S. Mendibur, Clerk*
 CLERK

BY: *[Signature]*
 D.C.