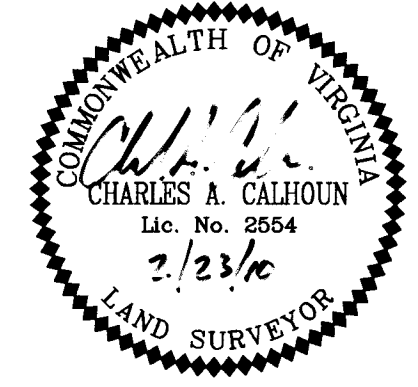
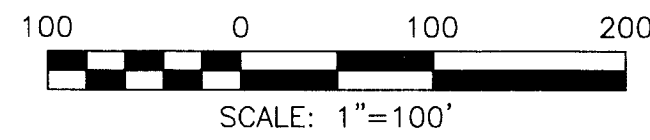


BOUNDARY LINE ADJUSTMENT & PROPERTY
 LINE VACATION ON THE PROPERTIES OF
**THE YORK COUNTY SCHOOL BOARD &
 THE YORK COUNTY BOARD OF SUPERVISORS**
 NELSON DISTRICT YORK COUNTY VIRGINIA
 DATE: 12-11-2009 SCALE: 1"=100' JOB #09-216
 REV: 2/23/10 SHEET: 2 OF 2

LandTech Resources, Inc.
 Surveying • Engineering • GPS
 205-E Bulifants Blvd, Williamsburg, VA 23188
 Phone: (757) 565-1677 Fax: (757) 565-0782
 web: landtechresources.com



VIRGINIA STATE PLANE COORDINATES
 VA SOUTH ZONE (NAD 83)

PARCEL "A"
 N/F
 YORKTOWN-YORKTOWN
 SQUARE II, LLC
 INST. #050013715 (DEED)
 TAX MAP #18-00-00-0231
 GPIN #011B-4136-2616
 ZONED: RMF

PARCEL "A"
 N/F
 YORKTOWN-RIVERMEADE, LLC
 INST. #050014581 (DEED)
 INST. #060025366 (PLAT)
 TAX MAP #18-05-00-000A
 GPIN #011D-4590-2400
 ZONED: RMF

PARCEL "B"
 N/F
 YORKTOWN-RIVERMEADE II, LLC
 INST. #050014582 (DEED)
 INST. #060025367 (DEED)
 INST. #060025366 (PLAT)
 TAX MAP #18-05-00-000B
 GPIN #P11C-0045-2346
 ZONED: RMF

N/F
 UNITED STATE OF AMERICA
 NATIONAL PARK SERVICE
 DEED NOT FOUND
 TAX MAP #18-00-00-023
 GPIN #011B-2875-4449
 ZONED: RC

PARCEL "C"
 N/F
 BOYS & GIRLS CLUBS
 OF THE VIRGINIA PENINSULA
 INST. #050030493 (DEED)
 D.B. 451, PG. 410 (PLAT)
 TAX MAP #18-05-00-000C
 GPIN #011D-3847-2155
 ZONED: R13

N/F
 YORK COUNTY SCHOOL BOARD
 D.B. 156, PG. 241 (DEED)
 P.B. 6, PG. 175 (PLAT)
 TAX MAP #18-00-00-023A
 GPIN #011D-4461-1762
 ZONED: RC
FORMER AREA
 9.3129 AC.
 405,668 S.F.

NEW PARCEL "B"
TOTAL AREA
 1,185,416 S.F.
 27.2134 AC.

PARCEL "B"
 N/F
 YORK COUNTY SCHOOL BOARD
 D.B. 85, PG. 186 (DEED)
 INST. #080026782 (PLAT)
 TAX MAP #18-00-00-022
 GPIN #P11C-0235-1713
 ZONED: RC
FORMER AREA
 18.0502 AC.
 786,266 S.F.

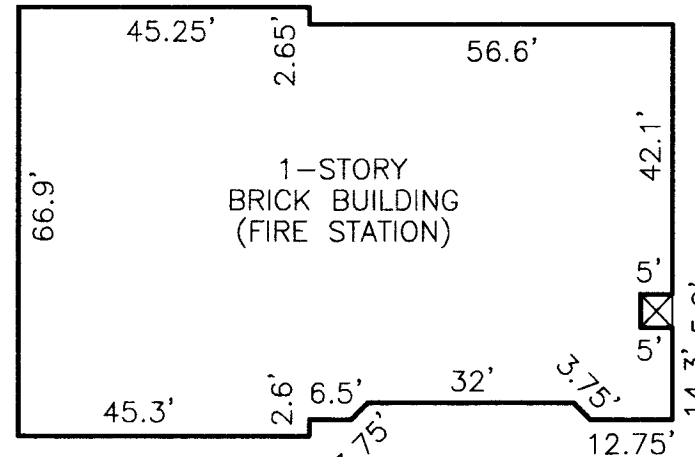
PARCEL "A"
 N/F
 YORK COUNTY
 BOARD OF SUPERVISORS
 D.B. 578, PG. 460 (DEED)
 P.B. 11, PG. 178 (PLAT)
 P.B. 5, PG. 116 (PLAT)
 TAX MAP #18-00-00-031
 GPIN #011D-4858-1419
 ZONED: RC
TOTAL AREA
 70,084 S.F.
 1.6089 AC.
FORMER AREA
 1,4593 AC.
 63,566 S.F.

TRACT 8-A
 N/F
 YORK STAR LODGE
 NO. 207 A.F. & A.M.
 D.B. 168, PG. 105 (DEED)
 D.B. 168, PG. 108 (PLAT)
 TAX MAP #18-00-00-021
 GPIN #011D-4068-1792
 ZONED: R13

N: 3611577.94
 E: 12059081.65

N: 3611888.02
 E: 12060657.86

N: 361188.14
 E: 12060670.32



BUILDING DETAIL
 SCALE: 1"=30'

**AREA OF CONVEYANCE
 TO YORK COUNTY
 BOARD OF SUPERVISORS**
 6,518 SQ. FT.
 0.1496 AC.

GOOSLEY ROAD
 ROUTE 238 (R/W VARIES)
 (R/W SHOWN PER VDOT PROJECT NO. 0637-099-134, C-501)

EX. COMMONWEALTH OF VA
 8' MAINTENANCE ESMT
 (INST. #080026782)

APPROVED:
 YORK COUNTY BOARD OF SUPERVISORS
 BY: *U. Maddala*
 PLAT APPROVING AGENT
 DATE: 4/16/10

STATE OF VIRGINIA
 COUNTY OF YORK
 IN THE CLERK'S OFFICE OF THE CIRCUIT COURT FOR THE
 COUNTY OF YORK-POQUOSON THE 11th DAY OF April
 2010. THIS PLAT WAS PRESENTED AND ADMITTED TO RECORD
 AS THE LAW DIRECTS AS INSTRUMENT NO. 100006270
 9:54am

TESTE: *Lynn S. Mendibur*
 CLERK
 BY: *Allen*

LANDTECH RESOURCES, INC.

CURVE	RADIUS	ARC	CHORD	CHORD BEARING	DELTA ANGLE
C1	3784.72'	131.27'	131.26'	N 80°37'16" W	01°59'14"
C2	3784.72'	182.95'	182.93'	N 78°14'34" W	02°46'11"
C3	3784.72'	314.22'	314.13'	N 79°14'11" W	04°45'25"

LINE	BEARING	DISTANCE
L1	S 01°01'13" E	173.30'
L2	S 09°27'13" E	101.12'
L3	S 56°07'45" W	28.33'
L4	S 83°24'46" W	29.99'
L5	N 76°38'50" W	99.71'
L6	N 70°55'00" W	25.64'
L7	N 70°55'00" W	268.30'
L8	N 70°55'00" W	293.94'
L9	N 67°31'00" W	150.00'
L10	N 63°23'58" W	218.64'

2010 APR 16 AM 9:55