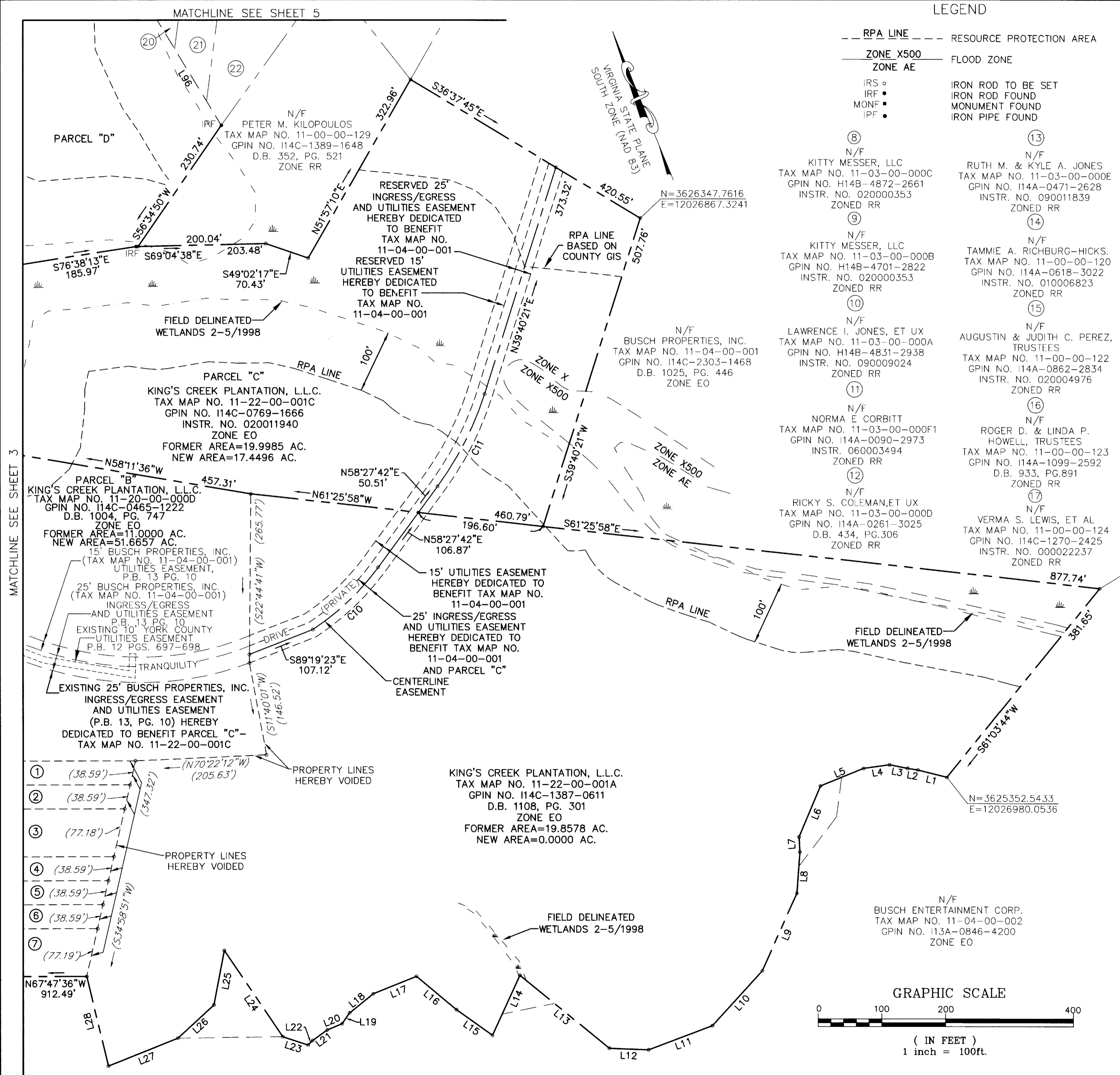


LEGEND

- RPA LINE --- RESOURCE PROTECTION AREA
- ZONE X500 --- FLOOD ZONE
- ZONE AE --- FLOOD ZONE
- IRS ○ IRON ROD TO BE SET
- IRF ● IRON ROD FOUND
- MONF ● MONUMENT FOUND
- IPF ● IRON PIPE FOUND

**BOUNDARY LINE ADJUSTMENT
BETWEEN THE PROPERTIES OF
KING'S CREEK PLANTATION, L.L.C.**

BRUTON DISTRICT, YORK COUNTY, VIRGINIA
DATE: 1/04/10 SCALE: 1"=100'
REVISED: 3/01/10
SHEET 4 OF 6



MATCHLINE SEE SHEET 3

MATCHLINE SEE SHEET 5

- ⑧ N/F KITTY MESSER, LLC
TAX MAP NO. 11-03-00-000C
GPIN NO. H14B-4872-2661
INSTR. NO. 020000353
ZONED RR
- ⑨ N/F KITTY MESSER, LLC
TAX MAP NO. 11-03-00-000B
GPIN NO. H14B-4701-2822
INSTR. NO. 020000353
ZONED RR
- ⑩ N/F LAWRENCE I. JONES, ET UX
TAX MAP NO. 11-03-00-000A
GPIN NO. H14B-4831-2938
INSTR. NO. 090009024
ZONED RR
- ⑪ N/F NORMA E CORBITT
TAX MAP NO. 11-03-00-000F1
GPIN NO. 114A-0090-2973
INSTR. 060003494
ZONED RR
- ⑫ N/F RICKY S. COLEMAN, ET UX
TAX MAP NO. 11-03-00-000D
GPIN NO. 114A-0261-3025
D.B. 434, PG.306
ZONED RR
- ⑬ N/F RUTH M. & KYLE A. JONES
TAX MAP NO. 11-03-00-000E
GPIN NO. 114A-0471-2628
INSTR. NO. 090011839
ZONED RR
- ⑭ N/F TAMMIE A. RICHBURG-HICKS.
TAX MAP NO. 11-00-00-120
GPIN NO. 114A-0618-3022
INSTR. NO. 010006823
ZONED RR
- ⑮ N/F AUGUSTIN & JUDITH C. PEREZ,
TRUSTEES
TAX MAP NO. 11-00-00-122
GPIN NO. 114A-0862-2834
INSTR. NO. 020004976
ZONED RR
- ⑯ N/F ROGER D. & LINDA P.
HOWELL, TRUSTEES
TAX MAP NO. 11-00-00-123
GPIN NO. 114A-1099-2592
D.B. 933, PG.891
ZONED RR
- ⑰ N/F VERMA S. LEWIS, ET AL
TAX MAP NO. 11-00-00-124
GPIN NO. 114C-1270-2425
INSTR. NO. 000022237
ZONED RR
- ⑱ N/F VERMA S. LEWIS, ET AL
TAX MAP NO. 11-00-00-125
GPIN NO. 114C-1310-2360
INSTR. NO. 000022237
ZONED RR
- ⑲ N/F DANIEL JACKSON, ET UX
TAX MAP NO. 11-00-00-126
GPIN NO. 114C-1376-2255
D.B.231, PG.344
ZONED RR
- ⑳ N/F DANIEL JUNIOR JACKSON
TAX MAP NO. 11-00-00-127
GPIN NO. 114C-1430-2176
D.B. 830, PG. 425
ZONED RR
- ㉑ N/F DANIEL JACKSON, JR.
TAX MAP NO. 11-00-00-128
GPIN NO. 114C-1463-2110
D.B. 830, PG. 425
ZONED RR
- ㉒ N/F VERMA S. LEWIS, ET AL
TAX MAP NO. 11-00-00-129
GPIN NO. 114C-1394-1860



**LANDMARK
DESIGN GROUP**

Engineers • Planners • Surveyors
Landscape Architects • Environmental Consultants
ONE COLUMBUS CENTER SUITE 1100
VIRGINIA BEACH, VIRGINIA 23462
(757) 473-2000 FAX: (757) 497-7933

APPROVED:
YORK COUNTY BOARD OF SUPERVISORS
BY: Al. Maddalena
PLAT APPROVING AGENT
8/3/10

STATE OF VIRGINIA, COUNTY OF YORK
IN THE CLERK'S OFFICE OF THE CIRCUIT COURT FOR THE
COUNTY OF YORK-POQUOSON THE 4th DAY OF
Aug. 2010, THIS MAP WAS PRESENTED AND
ADMITTED TO RECORD AS THE LAW DIRECTS AS
instr # 10002571 2:22 pm
TESTE: Lynn S. Mendibur
Clerk.
BY: Laneau & O.C.

