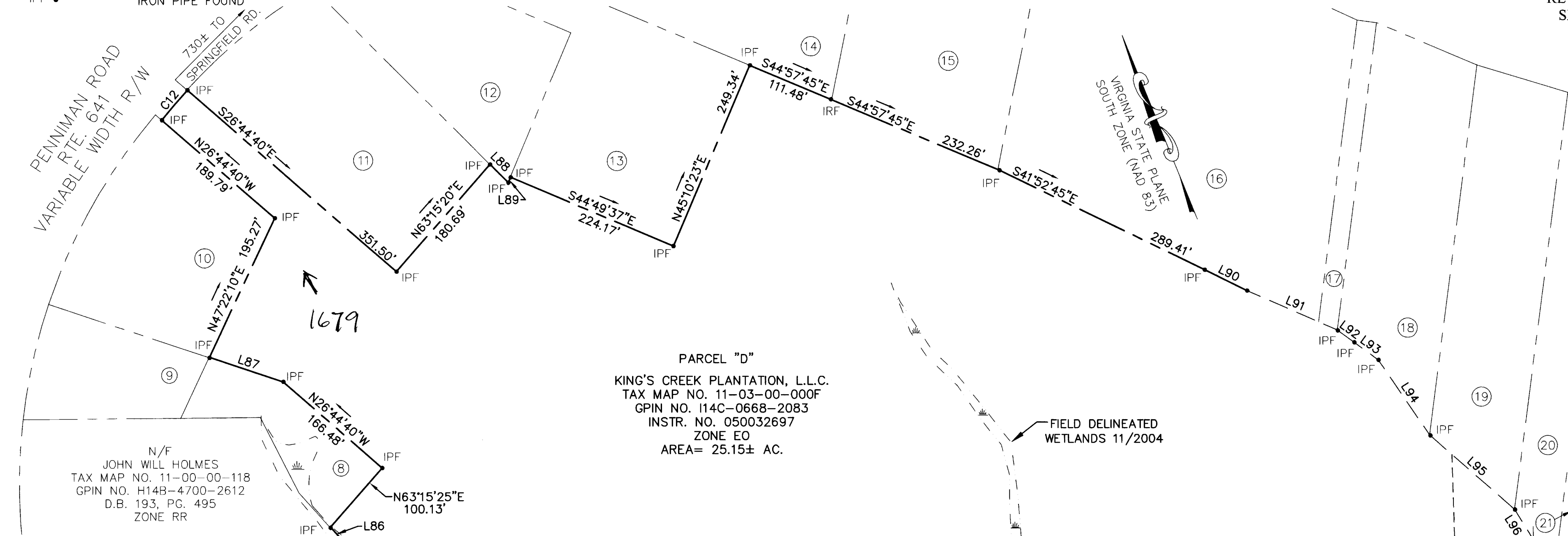


BOUNDARY LINE ADJUSTMENT
 BETWEEN THE PROPERTIES OF
 KING'S CREEK PLANTATION, L.L.C.

BRUTON DISTRICT, YORK COUNTY, VIRGINIA
 DATE: 1/04/10 SCALE: 1"=100'
 REVISED: 3/01/10
 SHEET 5 OF 6

- LEGEND
- RPA LINE --- RESOURCE PROTECTION AREA
 - ZONE X500 --- FLOOD ZONE
 - ZONE AE ---
 - IRS ○ IRON ROD TO BE SET
 - IRF ● IRON ROD FOUND
 - MONF ■ MONUMENT FOUND
 - IPF ● IRON PIPE FOUND

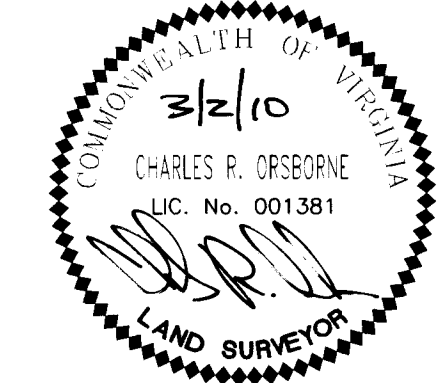


MATCHLINE SEE SHEET 3

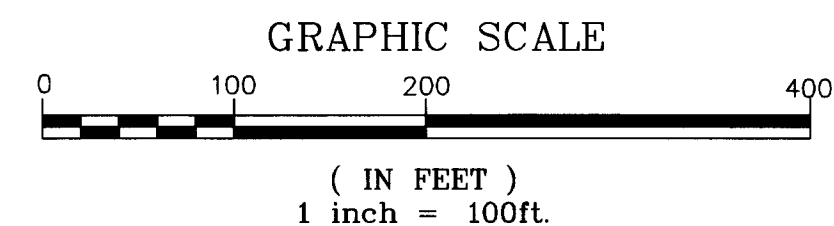
MATCHLINE SEE SHEET 4

LINE TABLE			LINE TABLE			LINE TABLE		
LINE	LENGTH	BEARING	LINE	LENGTH	BEARING	LINE	LENGTH	BEARING
L1	46.72'	N53°42'22"W	L33	61.03'	N12°24'32"W	L65	21.94'	N08°03'26"E
L2	16.78'	N58°19'40"W	L34	1.66'	S58°11'36"E	L66	28.52'	N08°03'26"E
L3	28.73'	N56°18'42"W	L35	18.47'	N06°43'06"E	L67	12.51'	N33°23'36"E
L4	41.16'	N75°57'56"W	L36	39.19'	N04°46'49"E	L68	21.34'	N33°23'36"E
L5	73.16'	S89°59'54"W	L37	68.56'	N04°45'32"E	L69	16.81'	N15°40'36"E
L6	86.94'	S44°59'54"W	L38	94.41'	N04°44'36"E	L70	7.39'	N15°40'36"E
L7	23.79'	S18°26'00"W	L39	51.30'	N02°44'06"W	L71	7.89'	N80°27'57"W
L8	65.13'	S26°33'48"W	L40	50.66'	N11°02'24"E	L72	88.06'	S82°36'37"E
L9	132.90'	S46°18'37"W	L41	39.14'	N70°07'45"W	L73	27.01'	N41°26'58"E
L10	116.13'	S64°29'58"W	L42	67.24'	N59°10'06"W	L74	104.17'	S85°42'03"E
L11	107.11'	N88°25'53"W	L43	40.45'	N58°22'36"W	L75	75.06'	N77°31'47"E
L12	61.57'	N65°30'51"W	L44	80.39'	N54°07'30"W	L76	35.56'	S82°17'04"E
L13	181.02'	N28°36'55"W	L45	141.16'	N50°26'09"W	L77	32.33'	N69°27'26"E
L14	103.57'	S46°42'07"W	L46	88.77'	N49°29'28"W	L78	16.78'	N14°04'18"E
L15	69.21'	N32°26'00"W	L47	89.84'	N62°06'48"W	L79	49.87'	N57°02'57"E
L16	81.75'	N27°47'02"W	L48	62.39'	N70°31'04"W	L80	51.01'	N82°58'28"E
L17	73.12'	S89°59'54"W	L49	50.51'	N65°06'03"W	L81	50.72'	S00°11'03"E
L18	47.46'	S73°17'57"W	L50	35.61'	N24°07'02"E	L82	54.57'	S21°35'00"W
L19	20.49'	S56°18'30"W	L51	21.40'	N34°07'16"W	L83	43.87'	S44°42'38"E
L20	25.54'	S89°59'54"W	L52	26.97'	S73°05'22"W	L84	149.21'	S22°12'17"W
L21	27.99'	S75°57'43"W	L53	51.06'	S73°05'22"W	L85	34.29'	S21°28'50"E
L22	10.17'	S68°11'49"W	L54	31.58'	S50°13'54"W	L86	54.28'	N19°43'25"W
L23	41.72'	N49°42'41"W	L55	57.64'	S83°16'59"W	L87	98.64'	N49°17'00"W
L24	163.42'	N11°52'04"W	L56	55.81'	N69°00'41"W	L88	32.83'	S22°43'40"E
L25	87.11'	S33°03'21"W	L57	44.59'	S76°01'26"W	L89	7.50'	N45°00'20"E
L26	76.63'	S69°38'48"W	L58	35.77'	S16°29'32"W	L90	59.58'	S41°29'45"E
L27	117.33'	N89°36'54"W	L59	79.20'	S80°04'56"W	L91	124.54'	S44°21'53"E
L28	144.44'	N08°34'08"E	L60	120.48'	N81°45'07"W	L92	27.01'	S31°31'01"E
L29	84.57'	N19°32'33"E	L61	107.38'	N53°08'45"W	L93	37.93'	S31°41'53"E
L30	96.58'	N01°28'51"E	L62	42.33'	S89°40'54"W	L94	115.13'	S12°03'01"E
L31	33.00'	N01°28'51"E	L63	19.54'	N23°08'48"E	L95	143.73'	S26°32'55"E
L32	151.19'	N14°15'36"W	L64	16.36'	N23°08'48"E	L96	235.76'	S09°08'47"E

CURVE TABLE						
CURVE	LENGTH	RADIUS	TANGENT	CHORD	CHORD BEARING	DELTA
C1	472.69'	1705.02'	237.87'	471.17'	N11°36'02"E	15°53'03"
C2	390.71'	1585.46'	196.35'	389.72'	S00°44'54"E	14°07'10"
C3	24.90'	1585.46'	12.45'	24.90'	N05°51'42"E	0°53'59"
C4	18.20'	1755.02'	9.10'	18.20'	N16°01'10"E	0°35'39"
C5	10.10'	611.62'	5.05'	10.10'	S13°24'08"W	0°56'46"
C6	75.58'	611.62'	37.84'	75.53'	S17°24'56"W	7°04'49"
C7	25.36'	611.62'	12.68'	25.36'	S22°08'37"W	2°22'34"
C8	50.87'	85.59'	26.21'	50.13'	N11°41'07"E	34°03'20"
C9	112.22'	85.59'	65.82'	104.35'	N42°54'15"W	75°07'23"
C10	141.70'	400.00'	71.60'	140.96'	N68°36'37"E	20°17'51"
C11	163.97'	500.00'	82.73'	163.23'	N49°04'01"E	18°47'22"
C12	50.01'	715.00'	25.02'	50.00'	S62°33'57"W	4°00'28"



LANDMARK DESIGN GROUP
 Engineers • Planners • Surveyors
 Landscape Architects • Environmental Consultants
 ONE COLUMBUS CENTER SUITE 1100
 VIRGINIA BEACH, VIRGINIA 23462
 (757) 473-2000 FAX: (757) 497-7933



APPROVED:
 YORK COUNTY BOARD OF SUPERVISORS
 BY: Al. Maddalena
 PLAT APPROVING AGENT
8/3/10
 STATE OF VIRGINIA, COUNTY OF YORK
 IN THE CLERK'S OFFICE OF THE CIRCUIT COURT FOR THE
 COUNTY OF YORK-POQUOSON THE 14 DAY OF
Aug. 2010, THIS MAP WAS PRESENTED AND
 ADMITTED TO RECORD AS THE LAW DIRECTS AS
instr # 10012671 2:22pm
 TESTE: Lynn S. Mendibur
 Clerk
 BY: James S. O.C.
 PROJ. NO. 1970093-014.01 DWG. NO. : 19101W