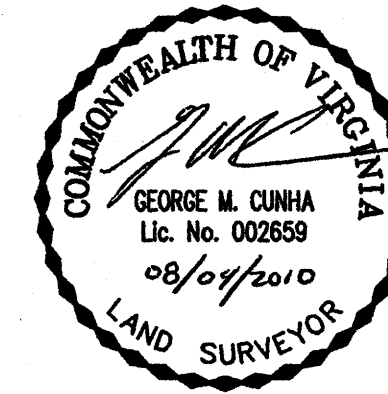


Legend

- D.B. DEED BOOK
- HWY. HIGHWAY
- INST. INSTRUMENT
- P.B. PLAT BOOK
- PG. PAGE
- RMA RESOURCE MANAGEMENT AREA
- RPA RESOURCE PROTECTION AREA
- S.F. SQUARE FEET
- IPF IRON PIPE FOUND
- IRF IRON ROD FOUND
- IRS IRON ROD SET
- PKF PK NAIL FOUND



DEDICATION OF WATERLINE EASEMENT  
ON THE PROPERTIES OF  
**SHANTINATH, LLC &  
SHANTINATH HOTELS, LLC.**  
**PARCELS A-2-A & A-2-B**  
INST.#: 080021496 & INST.#: 070017153  
BRUTON MAGISTERIAL DISTRICT  
COUNTY OF YORK, VIRGINIA

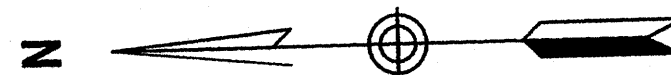
DATE: 08/04/10 SHEET 2 OF 2 SCALE: 1"=60'  
PROJECT NO: 31339.02 DRAWN BY: MAG

**VHB** Vanasse Hangen Brustlin, Inc.  
Transportation Land Development Environmental Services  
351 McLaws Circle - Suite 3  
Williamsburg, Virginia 23185  
(757) 220-0500 • FAX (757) 220-8544

PLAT INSTRUMENT #100021722

Filed in the Clerk's Office, Circuit Court,  
York Co., - Poquoson, VA  
the 28<sup>th</sup> day of December, 2010  
Teste: Lynn S. Mendibur, Clerk 2:33 pm  
By: *[Signature]*, D.C.

VIRGINIA STATE PLANE COORDINATE SYSTEM  
SOUTH ZONE (NAD83)



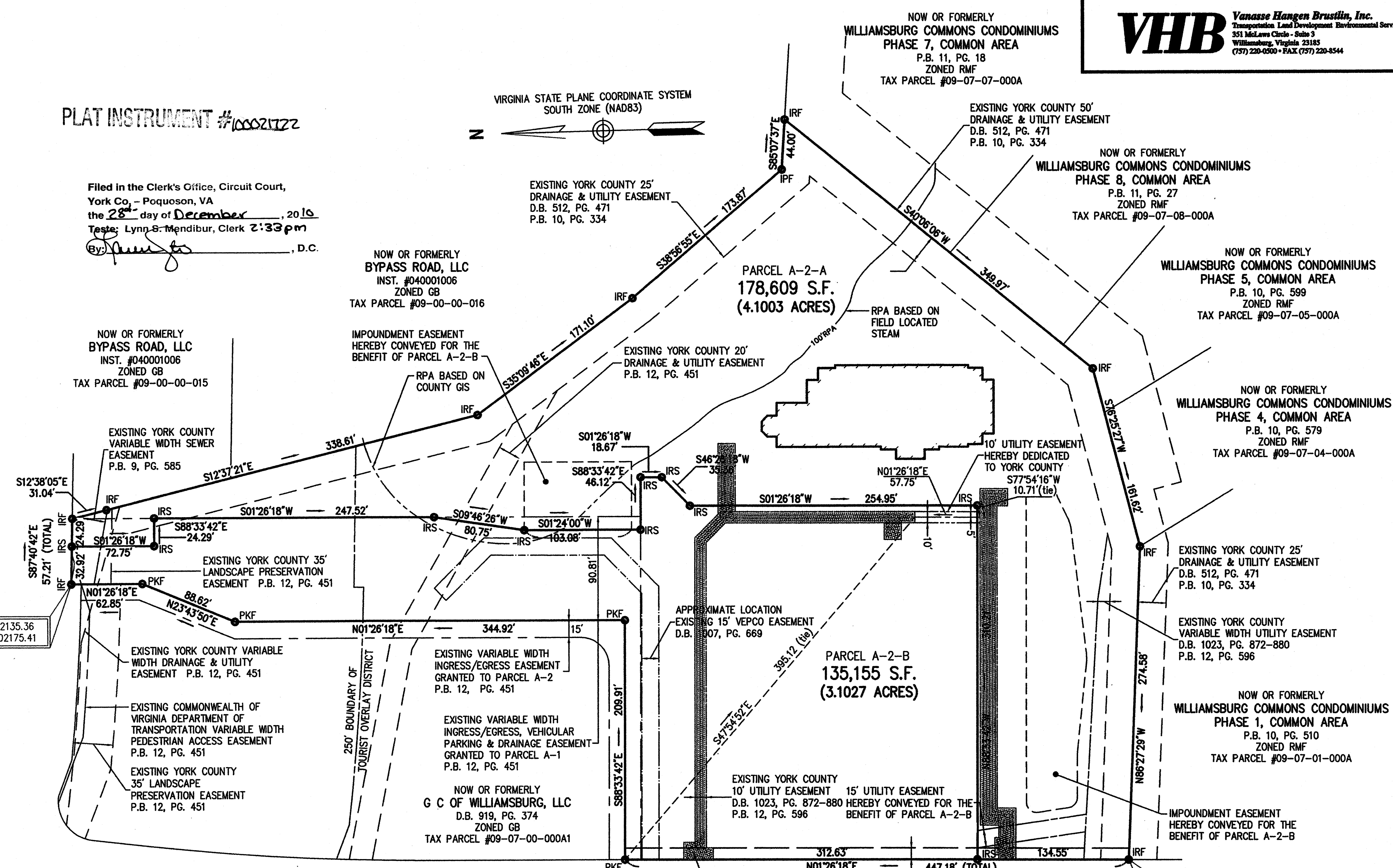
BYPASS ROAD - STATE ROUTE 60  
VARIABLE WIDTH PUBLIC R/W

N 3632135.36  
E 12002175.41

2010 DEC 28 PM 2:33



**COMMONS WAY - STATE ROUTE 690**  
100' PUBLIC R/W (P.B. 10, PG. 494)



N 3631204.82  
E 12001908.44