

**COMPILED PLAT SHOWING
BOUNDARY LINE ADJUSTMENT
BETWEEN THE PROPERTIES OF
JEANETTE J. KEENER,
TRUSTEE OF THE FAMILY TRUST
AND THE JLK FAMILY, LLC**
BETHEL DISTRICT, YORK COUNTY, VIRGINIA
DECEMBER 16, 2010

ADPA **A.D. POTTS & ASSOCIATES, INC.**
11524 JEFFERSON AVENUE
NEWPORT NEWS, VIRGINIA 23601
PHONE: (757) 595-4610



SCALE: 1"=100'

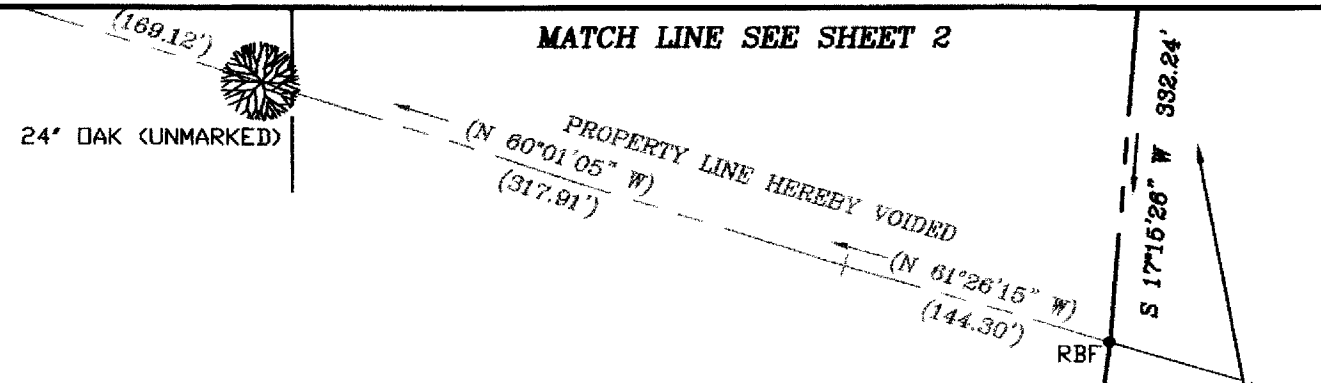
SHEET 3 OF 3

N. or F. THE JLK FAMILY LLC
INSTRUMENT #100013743
GPIN #S02A-2195-3879
TAX MAP #36-01-00-000A
ZONED: EO

(#501 COMMONWEALTH DRIVE)

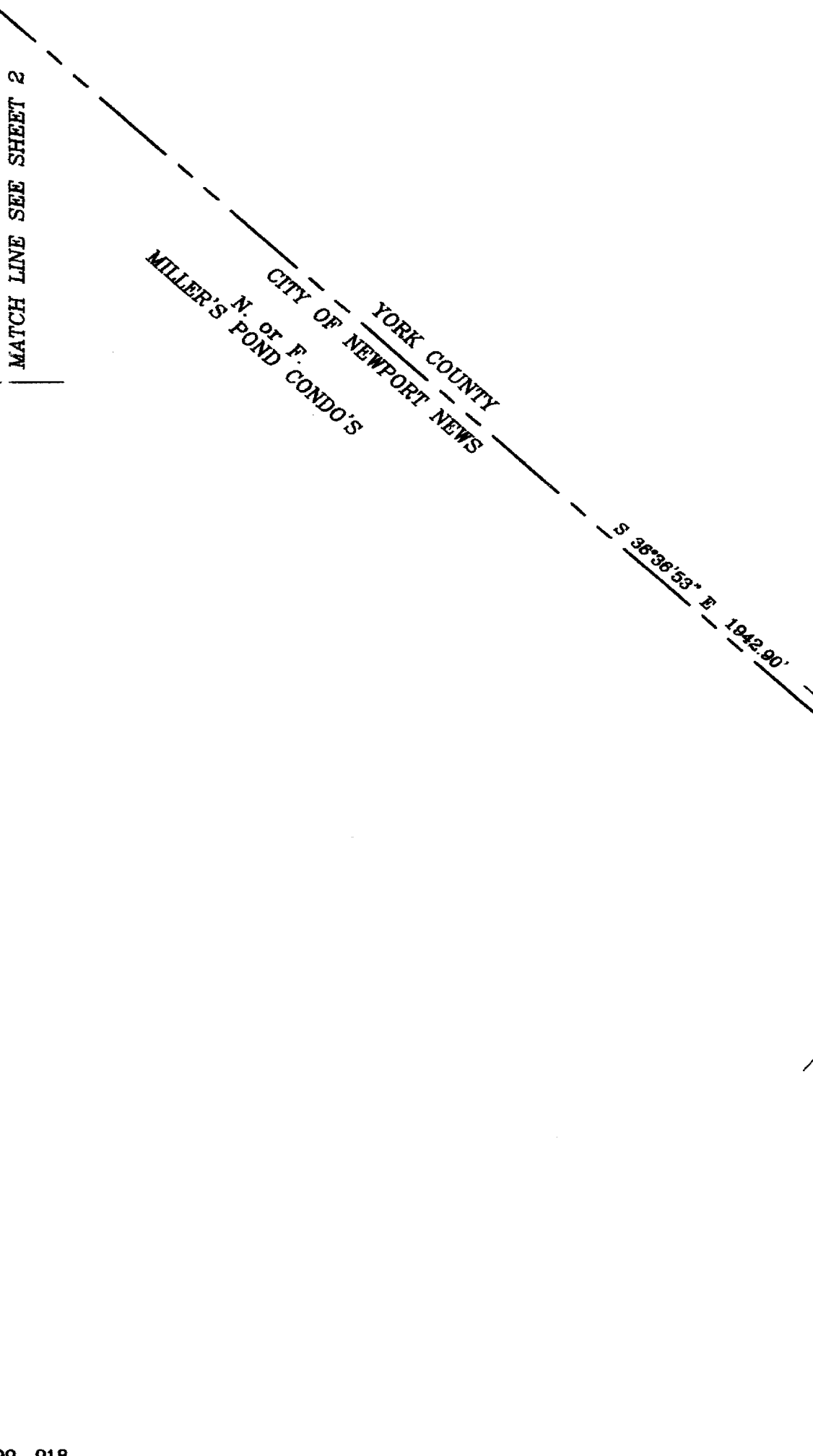
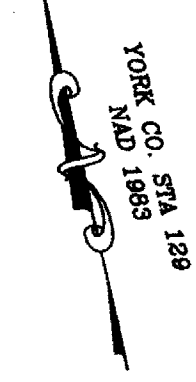
ORIGINAL PARCEL AREA
1,711,527 SQ. FT.
39.2913 ACRES

NEW PARCEL AREA
1,993,318 SQ. FT.
45.7603 ACRES

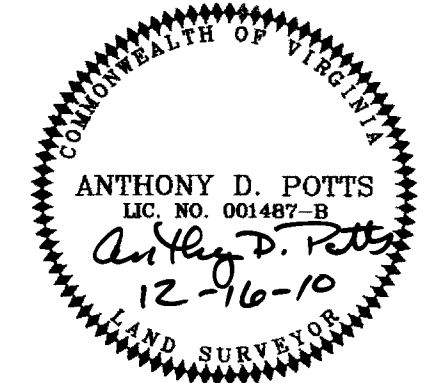


N. or F. H. COXTON, JR., et ux
INSTRUMENT #050008332
GPIN #S02B-3098-4278
TAX MAP #37-27-00-003
ZONED: EO

N. or F. DALE L. CUPP
D.B. 307 PG. 339
GPIN #S02B-2708-3666
TAX MAP #36-00-00-030
ZONED: EO



N. or F. J.J. KEENER, trustee
TAX MAP #154-00-04-01
ZONED: R5



N:3568018.8023
E:12077150.0338

APPROVED
YORK COUNTY BOARD OF SUPERVISORS
BY: U. Maddalena
PLAT APPROVING AGENT

DATE: 12/22/10

STATE OF VIRGINIA
COUNTY OF YORK
IN THE CLERK'S OFFICE OF THE CIRCUIT COURT
FOR THE COUNTY OF YORK-POQUOSON, ON
THIS 28 DAY OF December, 2010,
THIS MAP WAS PRESENTED AND ADMITTED TO RECORD
AS THE LAW DIRECTS, AS INSTRUMENT 2:33 pm
NUMBER 100021723

TESTE: Lynn S. Mendibur
CLERK

BY: [Signature]
DEPUTY CLERK
FILE NO. 10-1180