

RESUBDIVISION OF LOT 12

PARCELS 12A AND 12B

BUSCH INDUSTRIAL PARK

BRUTON DISTRICT YORK COUNTY VIRGINIA

DATE: 2/09/16 SCALE: 1"=100' DRAWN: JFS



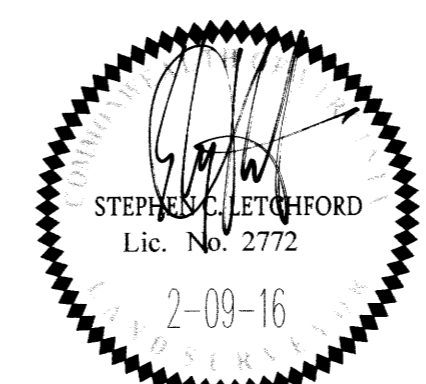
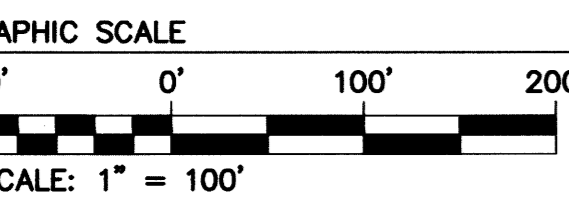
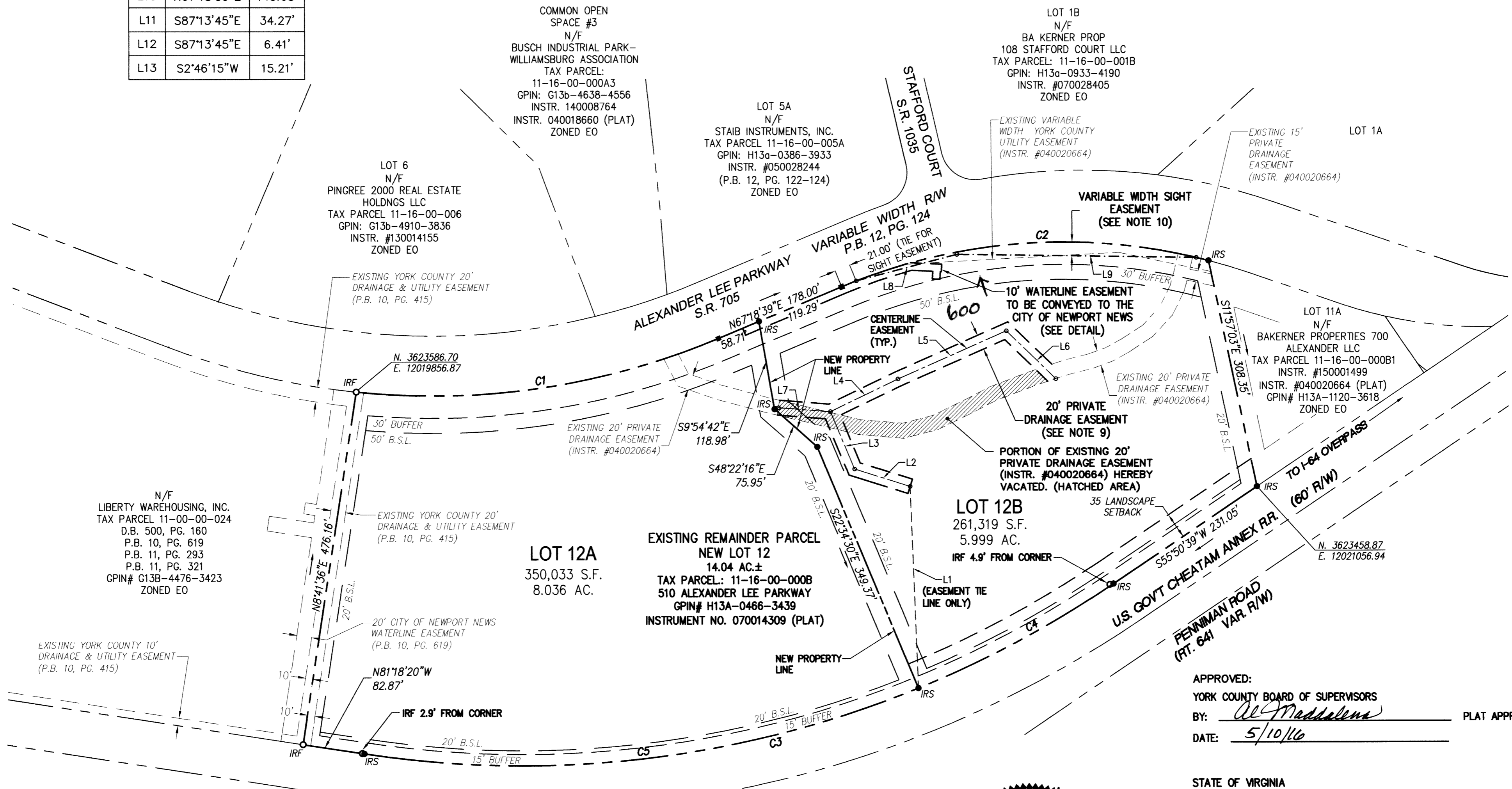
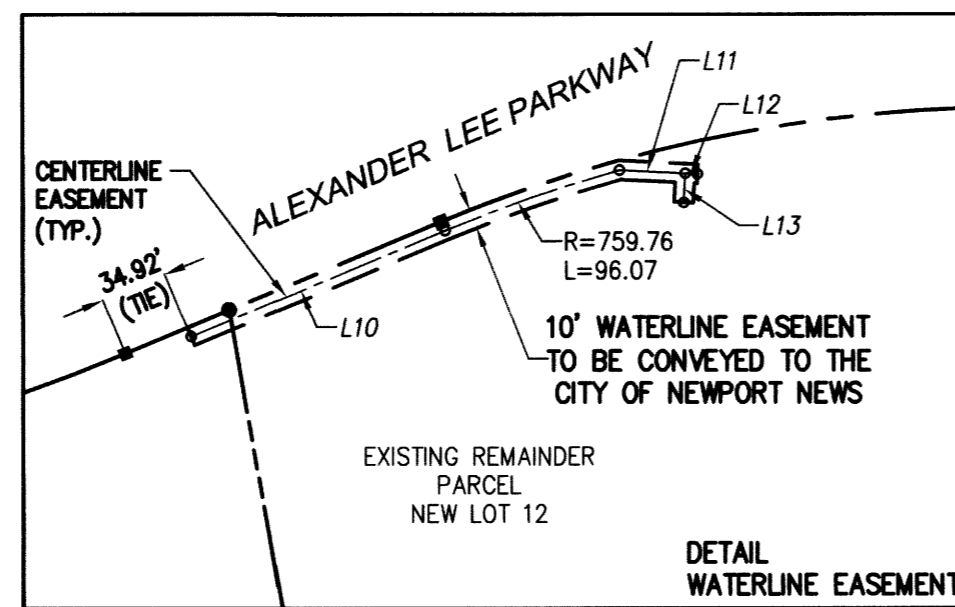
5248 Olde Towne Road, Suite 1
Williamsburg, Virginia 23188
Phone: (757) 253-0040
Fax: (757) 220-8994
www.aesva.com

Hampton Roads | Central Virginia | Middle Peninsula

JOB NO. 7804-10 SHEET 2 OF 2

LINE	BEARING	LENGTH
L1	N2°14'38"W	269.72'
L2	N72°27'59"W	77.55'
L3	N22°42'24"W	83.26'
L4	N64°24'01"E	99.98'
L5	N66°07'55"E	158.27'
L6	S45°50'08"E	92.05'
L7	N85°37'18"W	69.47'
L8	S75°21'24"W	138.78'
L9	N89°10'05"W	318.84'
L10	N67°18'39"E	143.08'
L11	S87°13'45"E	34.27'
L12	S87°13'45"E	6.41'
L13	S2°46'15"W	15.21'

CURVE #	DELTA	RADIUS	LENGTH	TANGENT	CHORD	CHORD BEARING
C1	28°39'16"	986.50'	493.36'	251.95'	488.24'	N81°38'18"E
C2	37°22'50"	764.76'	498.94'	258.71'	490.14'	N86°00'06"E
C3	42°51'00"	1401.79'	1048.36'	550.06'	1024.10'	S77°16'10"W
C4	12°05'04"	1401.79'	295.66'	148.38'	295.11'	S61°53'12"W
C5	30°45'56"	1401.79'	752.70'	385.66'	743.69'	S83°18'42"W



APPROVED:
YORK COUNTY BOARD OF SUPERVISORS
BY: DeMaddalena PLAT APPROVING AGENT
DATE: 5/10/16

STATE OF VIRGINIA
COUNTY OF YORK
IN THE CLERK'S OFFICE OF THE CIRCUIT COURT FOR THE COUNTY
OF YORK-POQUOSON THE 11th DAY OF May 2016
THIS MAP WAS PRESENTED AND ADMITTED TO RECORD AS THE LAW @ 2:23pm
DIRECTS, AS INSTRUMENT NO. 160007564
TESTE: Lyriston N. Nelson CLERK
BY: [Signature]