

YORK COUNTY GEODETIC CONTROL NETWORK
 VIRGINIA STATE PLANE COORDINATE SYSTEM
 SOUTH ZONE (NAD83)

PLAT OF SUBDIVISION
 YORKTOWN CRESCENT

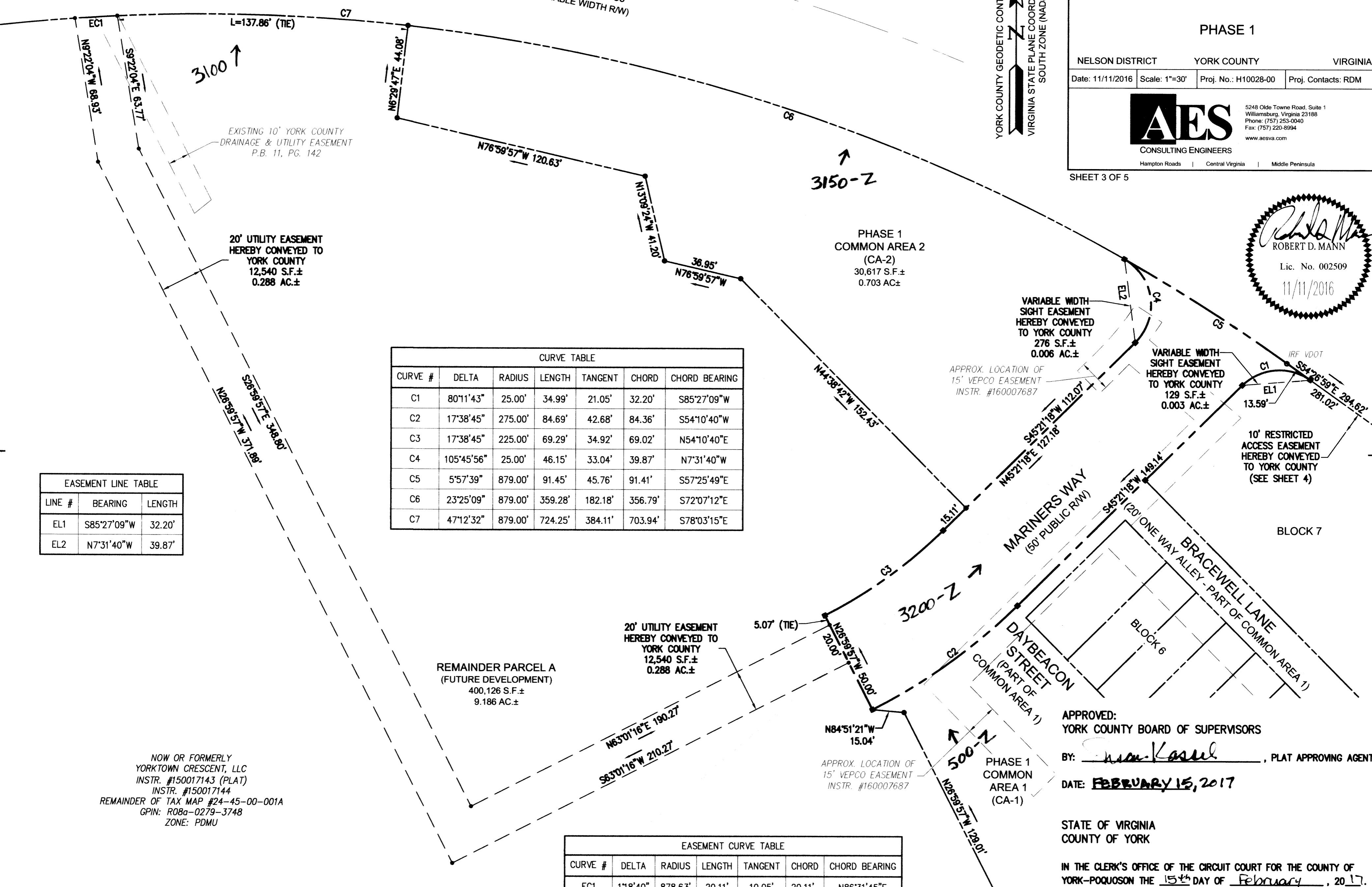
PHASE 1

NELSON DISTRICT YORK COUNTY VIRGINIA
 Date: 11/11/2016 Scale: 1"=30' Proj. No.: H10028-00 Proj. Contacts: RDM

5248 Olde Towne Road, Suite 1
 Williamsburg, Virginia 23188
 Phone: (757) 253-0040
 Fax: (757) 220-8994
 www.aesva.com
 Hampton Roads | Central Virginia | Middle Peninsula

SHEET 3 OF 5

Robert D. Mann
 ROBERT D. MANN
 Lic. No. 002509
 11/11/2016



CURVE TABLE						
CURVE #	DELTA	RADIUS	LENGTH	TANGENT	CHORD	CHORD BEARING
C1	80°11'43"	25.00'	34.99'	21.05'	32.20'	S85°27'09"W
C2	17°38'45"	275.00'	84.69'	42.68'	84.36'	S54°10'40"W
C3	17°38'45"	225.00'	69.29'	34.92'	69.02'	N54°10'40"E
C4	105°45'56"	25.00'	46.15'	33.04'	39.87'	N7°31'40"W
C5	5°57'39"	879.00'	91.45'	45.76'	91.41'	S57°25'49"E
C6	23°25'09"	879.00'	359.28'	182.18'	356.79'	S72°07'12"E
C7	47°12'32"	879.00'	724.25'	384.11'	703.94'	S78°03'15"E

EASEMENT LINE TABLE		
LINE #	BEARING	LENGTH
EL1	S85°27'09"W	32.20'
EL2	N7°31'40"W	39.87'

EASEMENT CURVE TABLE						
CURVE #	DELTA	RADIUS	LENGTH	TANGENT	CHORD	CHORD BEARING
EC1	118°40"	878.63'	20.11'	10.05'	20.11'	N86°31'45"E

NOW OR FORMERLY YORKTOWN CRESCENT, LLC
 INSTR. #150017143 (PLAT)
 INSTR. #150017144
 REMAINDER OF TAX MAP #24-45-00-001A
 GPIN: R08a-0279-3748
 ZONE: PDMU

APPROVED:
 YORK COUNTY BOARD OF SUPERVISORS
 BY: *W. Kassel*, PLAT APPROVING AGENT
 DATE: **FEBRUARY 15, 2017**

STATE OF VIRGINIA
 COUNTY OF YORK
 IN THE CLERK'S OFFICE OF THE CIRCUIT COURT FOR THE COUNTY OF YORK-POQUOSON THE 15th DAY OF February, 2017.
 THIS MAP WAS PRESENTED AND ADMITTED TO RECORD AS THE LAW DIRECTS, AS INSTRUMENT NO. 170003214
 TESTE: *Kristen N. Nelson*, CLERK
 BY: *W. Kassel*