

**OLD YORK-HAMPTON HIGHWAY**  
S.R. 634 - 60' R/W

58.00'  
S 18°05'31" E ——— S 15°20'22" E ——— 126.14'

N. OR F.  
E & O REAL ESTATE  
INVESTMENTS LLC  
TAX MAP# 24-00-00-195A  
GPIN: R08c-1129-0925  
INST. #080003774  
ZONING: GB  
#401 OLD-YORK-HAMPTON HWY.

(VACANT)  
N. OR F.  
DONALD E. & EVELYN M. SHIELDS  
TAX MAP# 24-00-00-191  
GPIN: R08c-1252-0587  
INST. #11000010630  
ZONING: GB  
#313 OLD YORK-HAMPTON HWY.

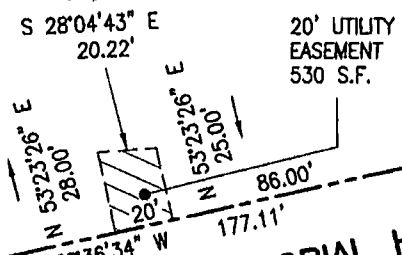
**PARCEL**  
1.4929 AC./65,031 S.F.

N. OR F.  
PONTON INVESTMENTS LLC  
TAX MAP# 24-00-00-195  
GPIN: R08c-0925-0833  
INST. #060001298  
ZONING: GB  
#7330 GEORGE WASHINGTON  
MEM. HWY.

(VACANT)  
N. OR F.  
GPIN: R08c-1085-0591

N 66°05'26" E ——— 152.71'  
N 63°53'26" E ——— 266.90'

S 65°59'42" W ——— 355.81'

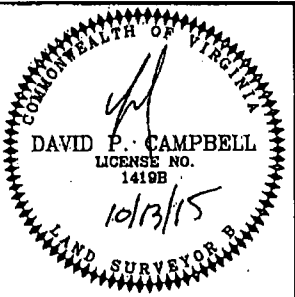


**GEORGE WASHINGTON MEMORIAL HIGHWAY**  
US ROUTE 17 - 110' R/W

**AREA OF EASEMENT= 530 S.F.**

**# 7300 GEORGE WASHINGTON MEMORIAL HIGHWAY**

**REFERENCE:**  
POOR HOUSE VENTURES LLC  
TAX MAP# 24-00-00-190B  
GPIN: R08c-1080-0720  
INST. #150008332  
D.B. 191, PG. 422 (PLAT)  
ZONING: GB  
#7300 GEORGE WASHINGTON  
MEMORIAL HIGHWAY



**UTILITY EASEMENT**  
FROM: POOR HOUSE VENTURES, LLC  
TO: THE COUNTY OF YORK  
NELSON DISTRICT, YORK COUNTY, VIRGINIA

CAMPBELL LAND SURVEYING, INC.  
P.O. BOX 865, YORKTOWN, VA. 23692  
(757) 890-0837