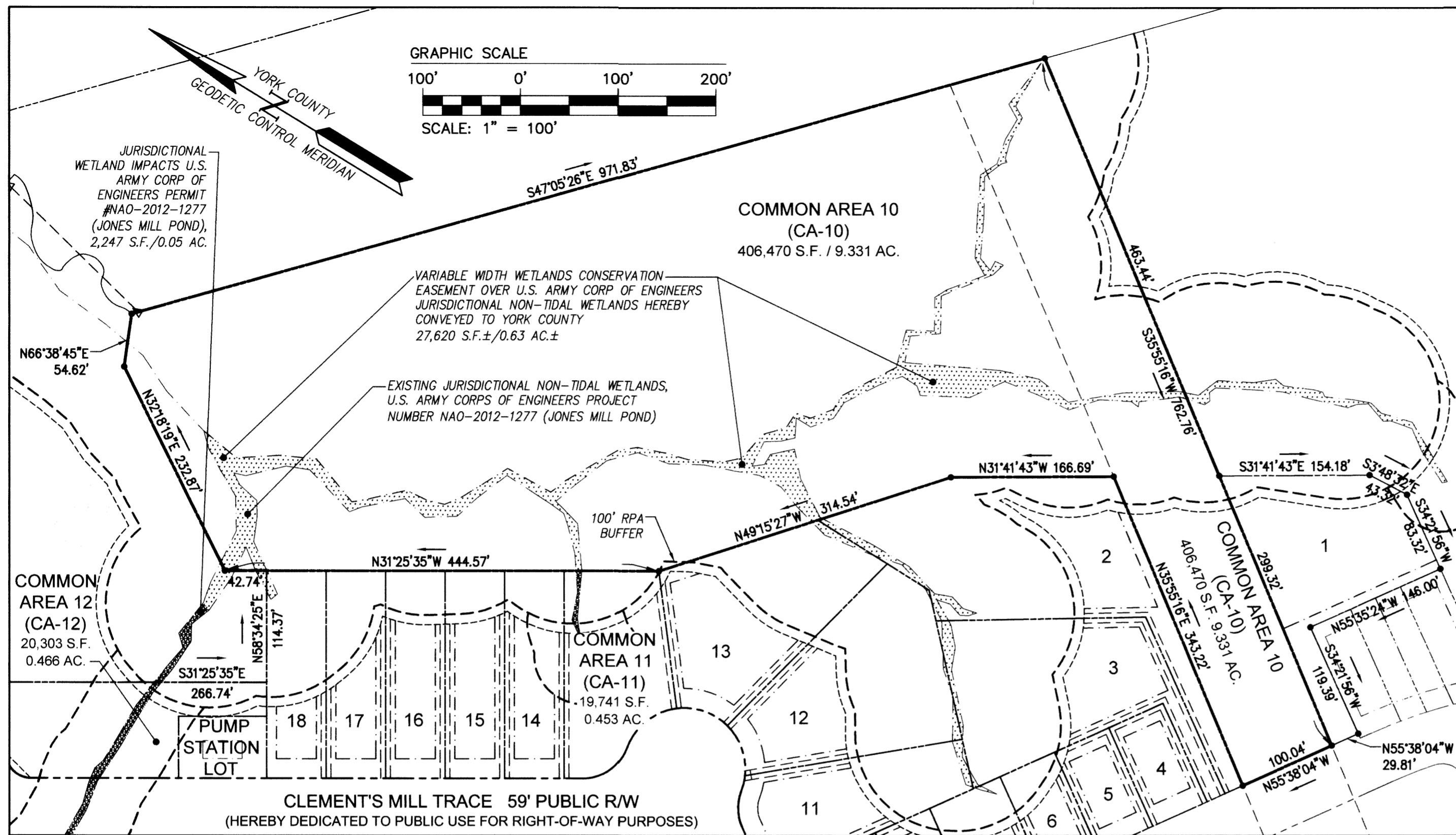


PLAT OF SUBDIVISION
WHITTAKER'S MILL
SINGLE FAMILY DETACHED HOMES
SECTION 2, PHASE 1
COMMON AREA DETAIL SHEET

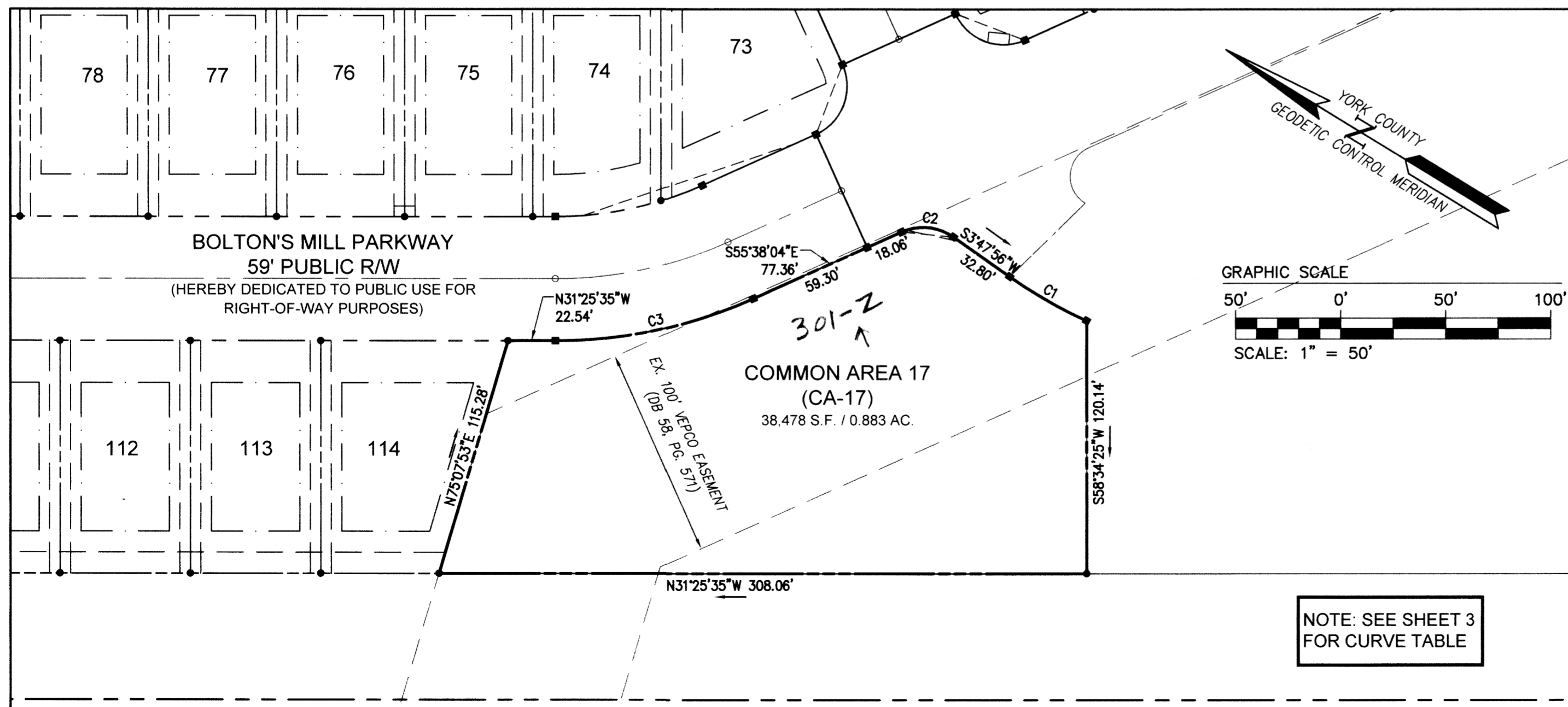
BRUTON DISTRICT COUNTY OF YORK VIRGINIA
Date: 04-11-17 Scale: Noted Proj. No.: 7804-08 Proj. Contacts: TRS/SCL

AES
CONSULTING ENGINEERS
5248 Old Towne Road, Suite 1
Williamsburg, Virginia 23186
Phone: (757) 253-0040
Fax: (757) 220-8994
www.aesva.com
Hampton Roads | Central Virginia | Middle Peninsula

SHEET 5 OF 5



COMMON AREA 10 (CA-10)
406,470 S.F. / 9.331 AC.
SCALE: 1" = 100'



NOTE: SEE SHEET 3 FOR CURVE TABLE

LEGEND

- PROPERTY LINE
- RIGHT-OF-WAY LINE
- BUILDING SETBACK LINE
- UTILITY EASEMENT
- SIGHT EASEMENT
- CMF CONCRETE MONUMENT FOUND
- IRF IRON ROD FOUND
- CONCRETE MONUMENT SET
- IRON ROD SET
- RPA RESOURCE PROTECTION AREA
- WMP WATERSHED MANAGEMENT AND PROTECTION AREA OVERLAY DISTRICT
- BOE BEGINNING OF EASEMENT
- EOE END OF EASEMENT



APPROVED:
YORK COUNTY BOARD OF SUPERVISORS
BY: Sam Kasal PLAT APPROVING AGENT
DATE: APRIL 20, 2017

STATE OF VIRGINIA
COUNTY OF YORK
IN THE CLERK'S OFFICE OF THE CIRCUIT COURT FOR THE COUNTY OF YORK-POQUOSON THE 28th DAY OF April, 2017
THIS MAP WAS PRESENTED AND ADMITTED TO RECORD AS THE LAW DIRECTS, AS INSTRUMENT NO. 170007558
TESTE: Kristen N. Nelson CLERK
Naellene Hagg n/c