

CA-3B
(32,740 S.F./
0.752 AC.)

LEGEND

- PROPERTY LINE
- - - - - RIGHT-OF-WAY LINE
- BUILDING SETBACK LINE
- UTILITY EASEMENT
- SIGHT / ACCESS EASEMENT
- CMF CONCRETE MONUMENT FOUND
- IRF IRON ROD FOUND
- CONCRETE MONUMENT SET
- IRON ROD SET
- BOE BEGINNING OF EASEMENT
- EOE END OF EASEMENT

**PLAT OF SUBDIVISION
WHITTAKER'S MILL
SINGLE FAMILY TOWNHOMES
SECTION 1, PHASE 1B**

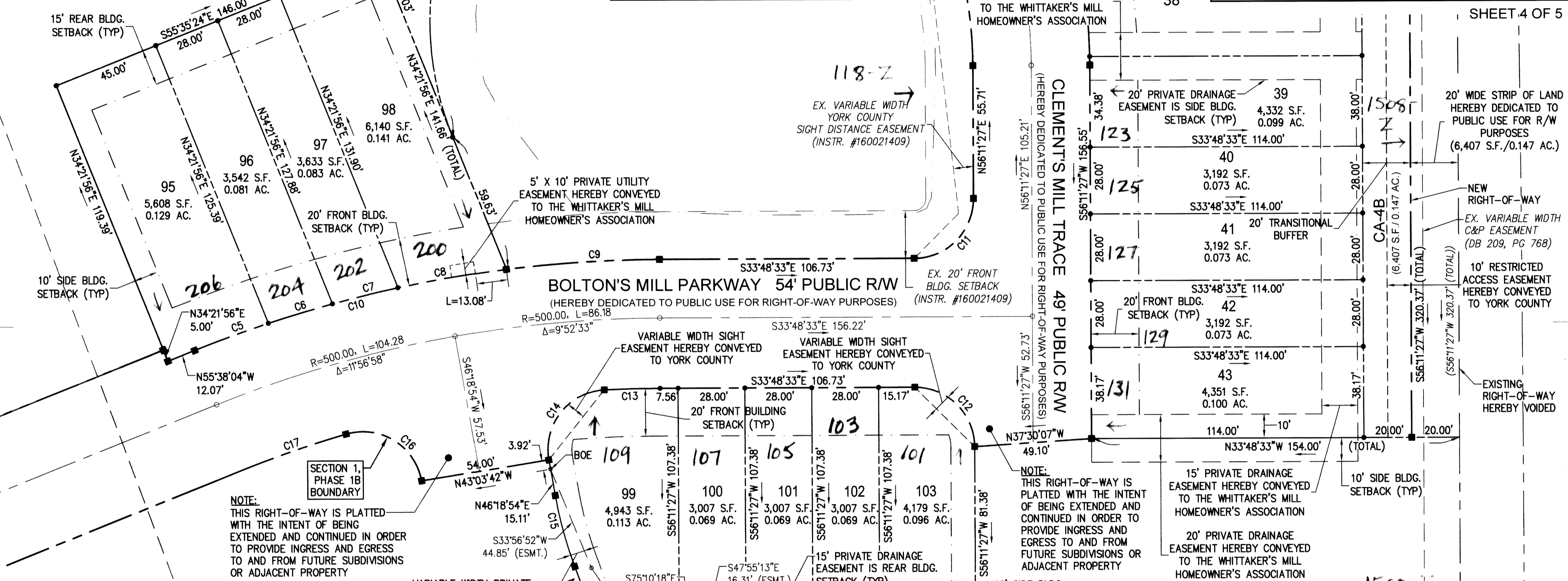
BRUTON DISTRICT COUNTY OF YORK VIRGINIA

Date: 04-11-17 Scale: 1"=30' Proj. No.: 7804-08B Proj. Contacts: TRS/SCL

AES
CONSULTING ENGINEERS

5248 Olde Towne Road, Suite 1
Williamsburg, Virginia 23188
Phone: (757) 253-0040
Fax: (757) 220-8994
www.aesva.com

Hampton Roads | Central Virginia | Middle Peninsula



CURVE TABLE

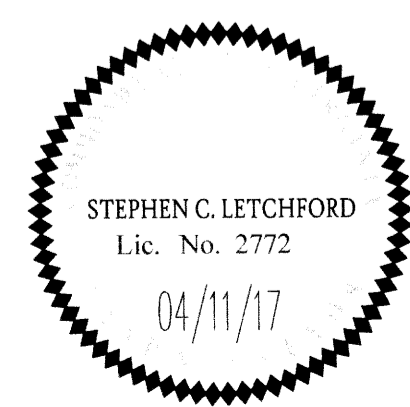
CURVE #	DELTA	RADIUS	LENGTH	TANGENT	CHORD	CHORD BEARING
C5	3°35'59"	524.50'	32.95'	16.48'	32.95'	S53°50'04"E
C6	3°04'17"	524.50'	28.12'	14.06'	28.11'	S50°29'56"E
C7	3°05'27"	524.50'	28.29'	14.15'	28.29'	S47°25'05"E
C8	5°01'57"	524.50'	46.07'	23.05'	46.05'	S43°21'23"E
C9	7°01'51"	524.50'	64.36'	32.22'	64.32'	S37°19'29"E
C10	21°49'31"	524.50'	199.79'	101.12'	198.59'	S44°43'18"E
C11	90°00'00"	25.00'	39.27'	25.00'	35.36'	S78°48'33"E
C12	90°00'00"	25.00'	39.27'	25.00'	35.36'	N11°11'27"E
C13	2°50'57"	470.50'	23.40'	11.70'	23.39'	N35°14'01"W
C14	97°01'37"	25.00'	42.34'	28.27'	37.46'	N85°10'18"W
C15	10°23'38"	170.50'	30.93'	15.51'	30.89'	N41°07'05"E
C16	96°22'46"	25.00'	42.05'	27.95'	37.27'	N1°52'29"W
C17	5°34'12"	470.50'	45.74'	22.89'	45.72'	N52°50'58"W

APPROVED:
YORK COUNTY BOARD OF SUPERVISORS
Sharon Kassel
DATE: APRIL 28, 2017

STATE OF VIRGINIA
COUNTY OF YORK

IN THE CLERK'S OFFICE OF THE CIRCUIT COURT FOR THE COUNTY OF YORK-POQUOSON THE 28th DAY OF April 2017
THIS MAP WAS PRESENTED AND ADMITTED TO RECORD AS THE LAW AT 2:58
DIRECTS, AS INSTRUMENT NO. 170001561 p.m.

TESTE: Kristen N. Nelson CLERK
BY: John J. Mount, D.C.



SHEET 4 OF 5