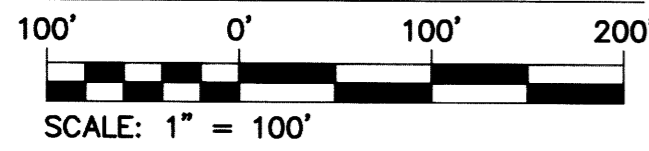


**LEGEND**

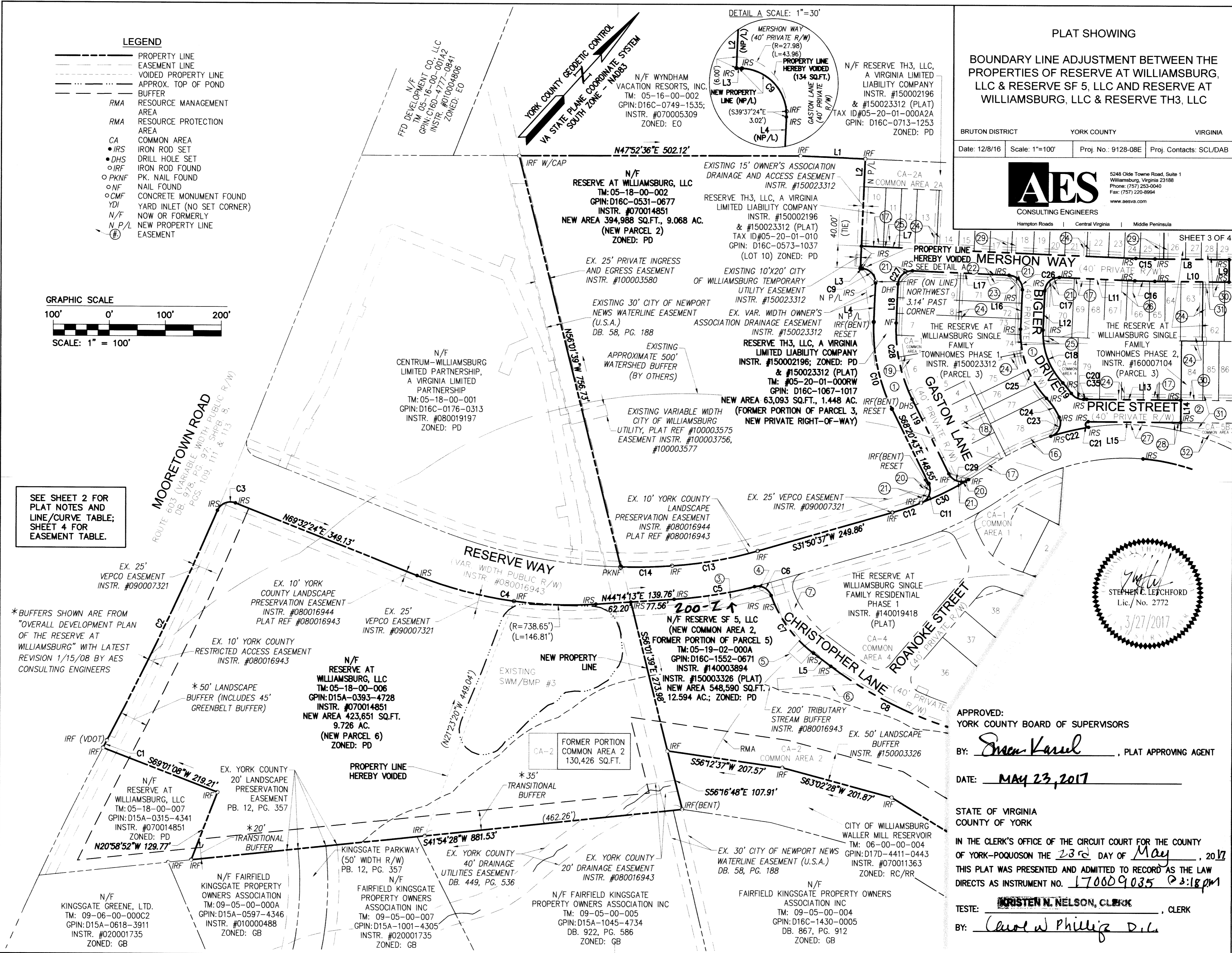
- PROPERTY LINE
- EASEMENT LINE
- VOIDED PROPERTY LINE
- APPROX. TOP OF POND BUFFER
- RMA RESOURCE MANAGEMENT AREA
- RMA RESOURCE PROTECTION AREA
- CA COMMON AREA
- IRS IRON ROD SET
- DHS DRILL HOLE SET
- IRF IRON ROD FOUND
- PKNF PK. NAIL FOUND
- NF NAIL FOUND
- CMF CONCRETE MONUMENT FOUND
- YDI YARD INLET (NO SET CORNER)
- N/F NOW OR FORMERLY
- N P/L NEW PROPERTY LINE EASEMENT

**GRAPHIC SCALE**

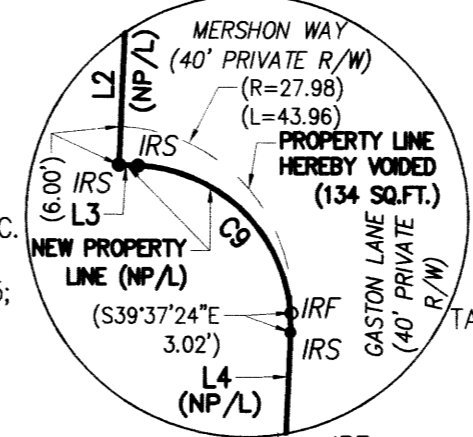


SEE SHEET 2 FOR PLAT NOTES AND LINE/CURVE TABLE; SHEET 4 FOR EASEMENT TABLE.

\*BUFFERS SHOWN ARE FROM "OVERALL DEVELOPMENT PLAN OF THE RESERVE AT WILLIAMSBURG" WITH LATEST REVISION 1/15/08 BY AES CONSULTING ENGINEERS



DETAIL A SCALE: 1"=30'



**PLAT SHOWING**

BOUNDARY LINE ADJUSTMENT BETWEEN THE PROPERTIES OF RESERVE AT WILLIAMSBURG, LLC & RESERVE SF 5, LLC AND RESERVE AT WILLIAMSBURG, LLC & RESERVE TH3, LLC

BRUTON DISTRICT YORK COUNTY VIRGINIA  
 Date: 12/8/16 Scale: 1"=100' Proj. No.: 9128-08E Proj. Contacts: SCL/DAB



5248 Olde Towne Road, Suite 1  
 Williamsburg, Virginia 23188  
 Phone: (757) 253-0040  
 Fax: (757) 220-8994  
 www.aesva.com



APPROVED:  
 YORK COUNTY BOARD OF SUPERVISORS  
 BY: Sharon Karul, PLAT APPROVING AGENT  
 DATE: MAY 23, 2017  
 STATE OF VIRGINIA  
 COUNTY OF YORK  
 IN THE CLERK'S OFFICE OF THE CIRCUIT COURT FOR THE COUNTY OF YORK-POQUOSON THE 23rd DAY OF May, 2017  
 THIS PLAT WAS PRESENTED AND ADMITTED TO RECORD AS THE LAW DIRECTS AS INSTRUMENT NO. 170609035 @ 2:18 PM  
 TESTE: KRISTEN N. NELSON, CLERK, CLERK  
 BY: Carol W Phillip D.L.