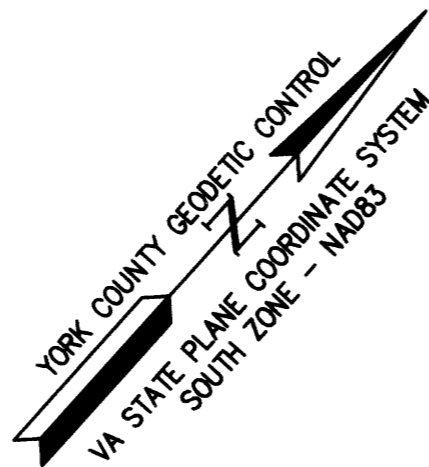


SEE SHEET 2 FOR
PLAT NOTES AND
LINE/CURVE TABLE



PLAT SHOWING
BOUNDARY LINE ADJUSTMENT BETWEEN THE
PROPERTIES OF RESERVE AT WILLIAMSBURG,
LLC & RESERVE SF 5, LLC AND RESERVE AT
WILLIAMSBURG, LLC & RESERVE TH3, LLC

BRUTON DISTRICT YORK COUNTY VIRGINIA
Date: 12/8/16 Scale: 1"=100' Proj. No.: 9128-08E Proj. Contacts: SCL/DAB



5248 Olde Towne Road, Suite 1
Williamsburg, Virginia 23188
Phone: (757) 253-0040
Fax: (757) 220-8994
www.aesva.com

Hampton Roads | Central Virginia | Middle Peninsula

SHEET 4 OF 4

EASEMENT TABLE

- ① EXISTING (R/W) SHARED YORK COUNTY & CITY OF WILLIAMSBURG UTILITY EASEMENTS INSTR. #150023312.
- ② EXISTING (R/W) SHARED YORK COUNTY & CITY OF WILLIAMSBURG UTILITY EASEMENTS INSTR. #160007104.
- ③ EXISTING VAR. WIDTH YORK COUNTY DRAINAGE EASEMENT INSTR. #140019418.
- ④ EXISTING VAR. WIDTH YORK COUNTY SIGHT EASEMENT INSTR. #140019418.
- ⑤ EXISTING 30' CITY OF WILLIAMSBURG WATERLINE EASEMENT LR #110003901 & #110003902.
- ⑥ EXISTING 20' OWNER'S ASSOCIATION DRAINAGE EASEMENT INSTR. #140019418.
- ⑦ EXISTING (R/W) SHARED YORK COUNTY & CITY OF WILLIAMSBURG UTILITY EASEMENTS INSTR. #140019418.
- ⑧ EXISTING 5' SHARED YORK COUNTY & CITY OF WILLIAMSBURG UTILITY EASEMENT INSTR. #140019418.
- ⑨ EXISTING 10' YORK COUNTY LANDSCAPE PRESERVATION EASEMENT, INSTR. #140019418.
- ⑩ EXISTING 20' OWNER'S ASSOCIATION DRAINAGE EASEMENT, INSTR. #140019418.
- ⑪ EXISTING 20' OWNER'S ASSOCIATION DRAINAGE EASEMENT, INSTR. #150003326.
- ⑫ EXISTING 10' YORK COUNTY RESTRICTED ACCESS EASEMENT, INSTR. #150003326.
- ⑬ EXISTING VAR. WIDTH HOMEOWNER'S ASSOCIATION DRAINAGE EASEMENT, INSTR. 150003326.
- ⑭ EXISTING 10' YORK COUNTY LANDSCAPE PRESERVATION EASEMENT, INSTR. 150003326.
- ⑮ EXISTING 5' SHARED YORK COUNTY & CITY OF WILLIAMSBURG UTILITY EASEMENT, INSTR. 150003326.
- ⑯ EXISTING 10' YORK COUNTY RESTRICTED ACCESS EASEMENT, INSTR. #150023312.
- ⑰ EXISTING 5' SHARED YORK COUNTY & CITY OF WILLIAMSBURG UTILITY EASEMENT, INSTR. 150023312.
- ⑱ EXISTING 10' OWNER'S ASSOCIATION ACCESS EASEMENT, INSTR. #150023312.
- ⑲ EXISTING 7.5' OWNER'S ASSOCIATION DRAINAGE EASEMENT, INSTR. #150023312.
- ⑳ EXISTING VAR. WIDTH OWNER'S ASSOCIATION DRAINAGE EASEMENT, INSTR. #150023312.
- ㉑ EXISTING VAR. WIDTH YORK COUNTY SIGHT EASEMENT, INSTR. #150023312.
- ㉒ EXISTING 15' OWNER'S ASSOCIATION DRAINAGE EASEMENT, INSTR. #150023312.
- ㉓ EXISTING VAR. WIDTH OWNER'S ASSOCIATION DRAINAGE EASEMENT, INSTR. #150023312.
- ㉔ EXISTING 10' OWNER'S ASSOCIATION ACCESS EASEMENT, INSTR. #150023312.
- ㉕ EXISTING 10' YORK COUNTY LANDSCAPE PRESERVATION EASEMENT, INSTR. #150023312.
- ㉖ EXISTING 20' OWNER'S ASSOCIATION DRAINAGE & ACCESS EASEMENT, INSTR. #150023312.
- ㉗ EXISTING 20' YORK COUNTY UTILITY EASEMENT, INSTR. #150023312.
- ㉘ EXISTING VAR. WIDTH YORK COUNTY RESTRICTED ACCESS EASEMENT, INSTR. #150023312.
- ㉙ EXISTING 15' OWNER'S ASSOCIATION DRAINAGE & ACCESS EASEMENT, INSTR. #150023312.
- ㉚ EXISTING 10' YORK COUNTY PRESERVATION EASEMENT, INSTR. #160007104.
- ㉛ EXISTING 5' SHARED YORK COUNTY & CITY OF WILLIAMSBURG UTILITY EASEMENT, INSTR. #160007104.
- ㉜ EXISTING 10' YORK COUNTY RESTRICTED ACCESS EASEMENT, INSTR. #160007104 & 10' YORK COUNTY LANDSCAPE PRESERVATION EASEMENT, INSTR. #080016943.
- ㉝ EXISTING VARIABLE WIDTH & 20' OWNER'S ASSOCIATION DRAINAGE EASEMENT, INSTR. #150003326.

APPROVED:
YORK COUNTY BOARD OF SUPERVISORS

BY: Joan Kasul, PLAT APPROVING AGENT

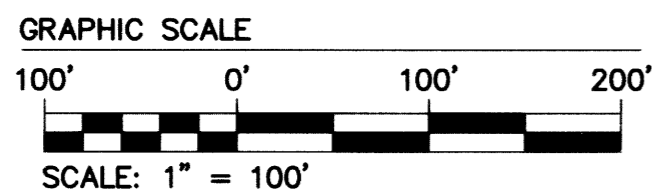
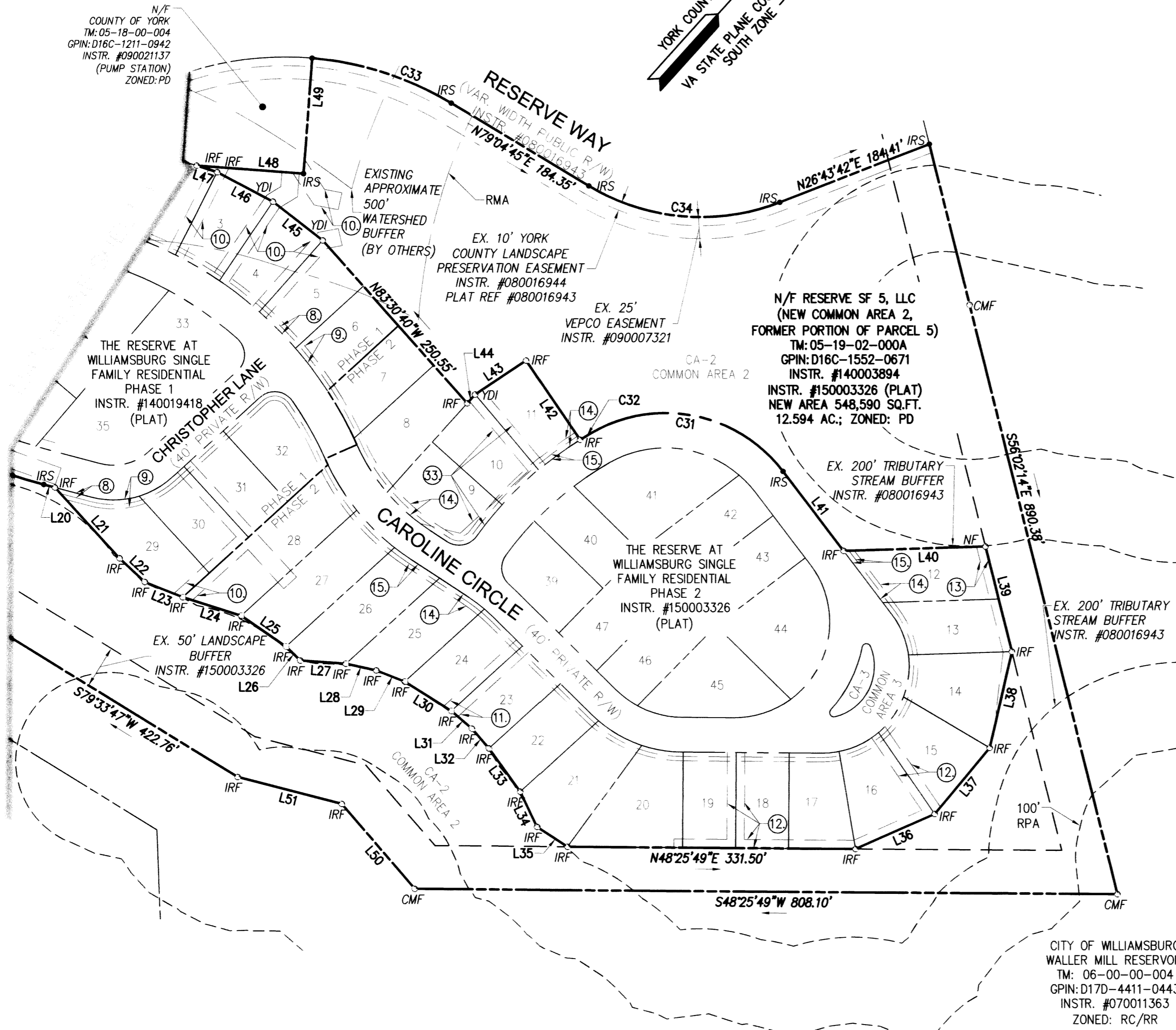
DATE: MAY 23, 2017

STATE OF VIRGINIA
COUNTY OF YORK

IN THE CLERK'S OFFICE OF THE CIRCUIT COURT FOR THE COUNTY
OF YORK-POQUOSON THE 23rd DAY OF May, 2017
THIS PLAT WAS PRESENTED AND ADMITTED TO RECORD AS THE LAW
DIRECTS AS INSTRUMENT NO. 170009035 @ 2:18pm

TESTE: KRISTEN N. NELSON, CLERK, CLERK

BY: Cawel W. Phillips, D.C.



CITY OF WILLIAMSBURG
WALLER MILL RESERVOIR
TM: 06-00-00-004
GPIN: D17D-4411-0443
INSTR. #070011363
ZONED: RC/RR