


BOUNDARY LINE ADJUSTMENT BETWEEN THE PROPERTIES OF OLD POINT NATIONAL BANK OF PHOEBUS

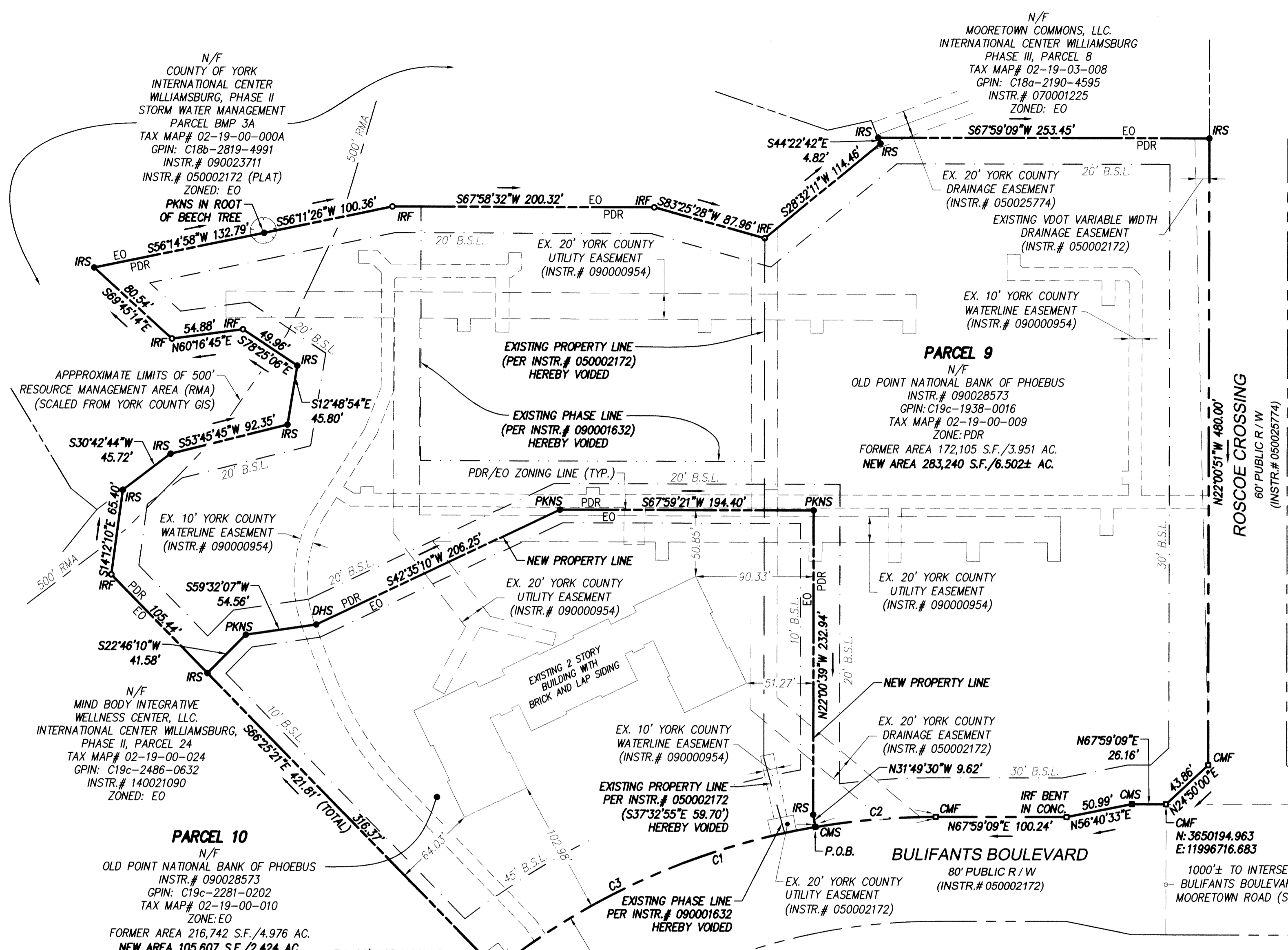
BRUTON DISTRICT YORK COUNTY VIRGINIA
 Date: 2-10-2017 Scale: 1"=60' Proj. No.: W10444-01 Proj. Contacts: SCL



5248 Olde Towne Road, Suite 1
 Williamsburg, Virginia 23188
 Phone: (757) 253-0040
 Fax: (757) 220-8994
 www.aesva.com

Hampton Roads | Central Virginia | Middle Peninsula

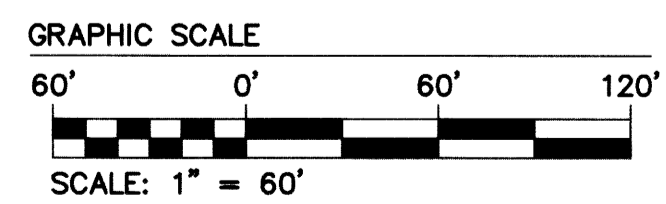
SHEET 2 OF 2



- LEGEND**
- = RIGHT OF WAY LINE
 - = PROPERTY LINE
 - - - = CONDOMINIUM PHASE LINE
 - · - · = ADJACENT PROPERTY LINE
 - · - · = EASEMENT LINE
 - 500' RMA = RESOURCE MANAGEMENT AREA
 - B.S.L. = BUILDING SETBACK LINE
 - IRF = IRON ROD FOUND
 - IRS = IRON ROD SET
 - PKNS = PK NAIL SET
 - DHS = DRILL HOLE SET (IN CONCRETE)
 - CMF = CONCRETE MONUMENT FOUND
 - CMS = CONCRETE MONUMENT SET
 - INSTR. = INSTRUMENT
 - N/F = NOW OR FORMERLY
 - PDR = REDEFINED ZONING LINE
 - EO =

CURVE TABLE

CURVE #	DELTA	RADIUS	LENGTH	TANGENT	CHORD	CHORD BEARING
C1	38°31'00"	540.00'	363.01'	188.66'	356.21'	N48°43'39"E
C2	9°48'56"	540.00'	92.51'	46.37'	92.40'	N63°04'41"E
C3	28°42'04"	540.00'	270.50'	138.15'	267.68'	N43°49'11"E



APPROVED:
 BY YORK COUNTY BOARD OF SUPERVISORS
 BY: Shawn Kasse PLAT APPROVING AGENT
 DATE: JUNE 6, 2017

STATE OF VIRGINIA
 COUNTY OF YORK

IN THE CLERK'S OFFICE OF THE CIRCUIT COURT FOR THE COUNTY OF YORK-POQUOSON, THE 6th DAY OF June, 2017. 2:03pm

THIS MAP WAS PRESENTED AND ADMITTED TO RECORD AS THE LAW DIRECTS, AS INSTRUMENT NO. 170010091

TESTE: Kristen N. Nelson CLERK
 BY: Jammy Turner DC