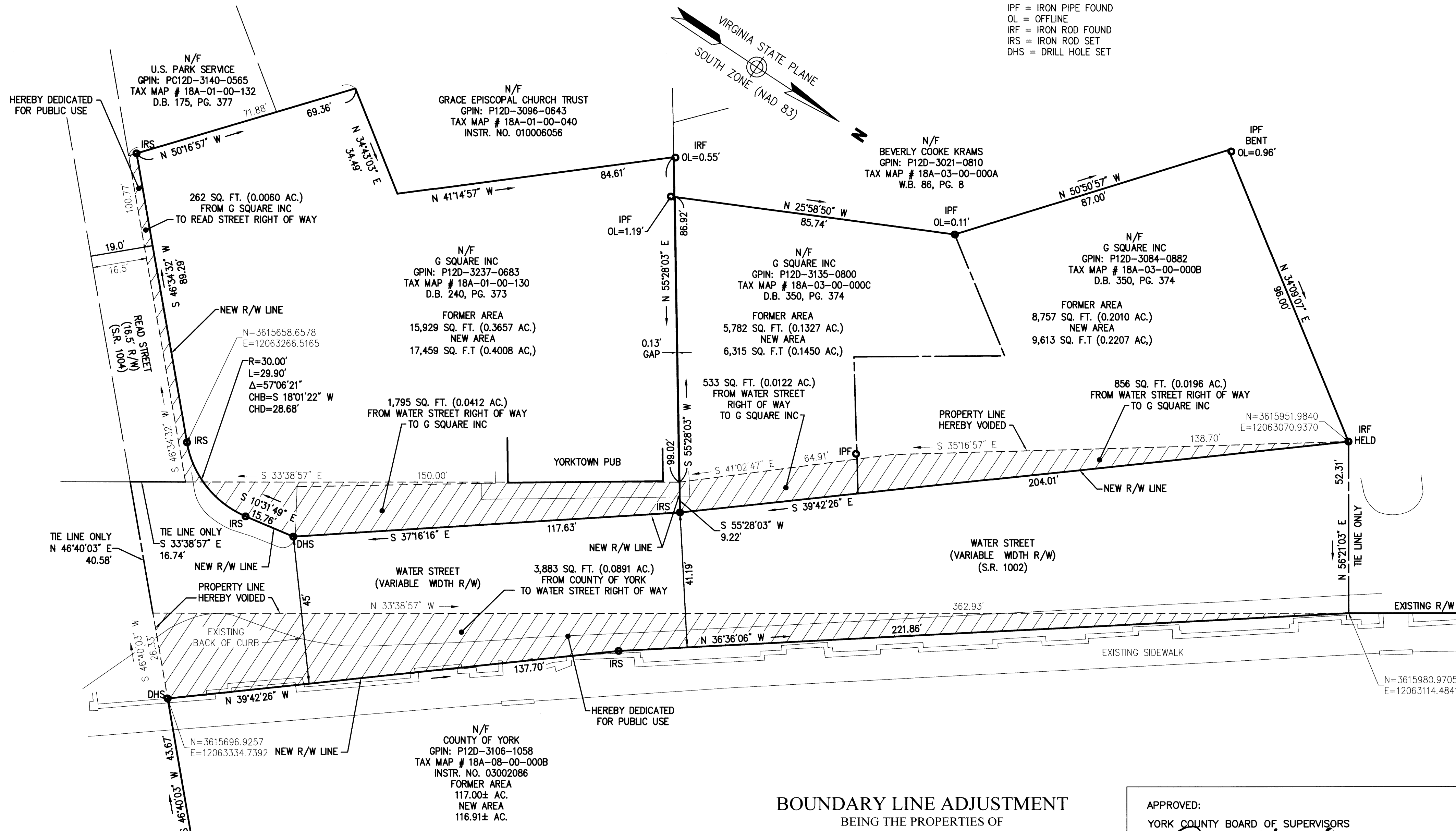


LEGEND

- IPF = IRON PIPE FOUND
- OL = OFFLINE
- IRF = IRON ROD FOUND
- IRS = IRON ROD SET
- DHS = DRILL HOLE SET



Saved Friday, August 04, 2017 12:31:14 PM BORENE Plotted Friday, August 04, 2017 1:38:38 PM Greene, Scott \\VAW\DATA\PROJECTS\38641.00_GAL_WATER\PROPERTIES\CAD\SR\PLANSET\3864100-SUB-REV

HEREBY DEDICATED FOR PUBLIC USE

N/F
U.S. PARK SERVICE
GPIN: PC12D-3140-0565
TAX MAP # 18A-01-00-132
D.B. 175, PG. 377

N/F
GRACE EPISCOPAL CHURCH TRUST
GPIN: P12D-3096-0643
TAX MAP # 18A-01-00-040
INSTR. NO. 010006056

N/F
BEVERLY COOKE KRAMS
GPIN: P12D-3021-0810
TAX MAP # 18A-03-00-000A
W.B. 86, PG. 8

N/F
G SQUARE INC
GPIN: P12D-3237-0683
TAX MAP # 18A-01-00-130
D.B. 240, PG. 373

N/F
G SQUARE INC
GPIN: P12D-3135-0800
TAX MAP # 18A-03-00-000C
D.B. 350, PG. 374

N/F
G SQUARE INC
GPIN: P12D-3084-0882
TAX MAP # 18A-03-00-000B
D.B. 350, PG. 374

FORMER AREA
8,757 SQ. FT. (0.2010 AC.)
NEW AREA
9,613 SQ. FT. (0.2207 AC.)

N=3615658.6578
E=12063266.5165

R=30.00'
L=29.90'
Δ=57°06'21"
CHB=S 18°01'22" W
CHD=28.68'

1,795 SQ. FT. (0.0412 AC.)
FROM WATER STREET RIGHT OF WAY
TO G SQUARE INC

533 SQ. FT. (0.0122 AC.)
FROM WATER STREET
RIGHT OF WAY
TO G SQUARE INC

856 SQ. FT. (0.0196 AC.)
FROM WATER STREET RIGHT OF WAY
TO G SQUARE INC

N=3615951.9840
E=12063070.9370

YORKTOWN PUB

PROPERTY LINE
HEREBY VOIDED

TIE LINE ONLY
N 46°40'03" E
40.58'

TIE LINE ONLY
S 33°38'57" E
16.74'

NEW R/W LINE

PROPERTY LINE
HEREBY VOIDED

EXISTING
BACK OF CURB

WATER STREET
(VARIABLE WIDTH R/W)

3,883 SQ. FT. (0.0891 AC.)
FROM COUNTY OF YORK
TO WATER STREET RIGHT OF WAY

WATER STREET
(VARIABLE WIDTH R/W)
(S.R. 1002)

EXISTING R/W

EXISTING SIDEWALK

N=3615696.9257
E=12063334.7392

N/F
COUNTY OF YORK
GPIN: P12D-3106-1058
TAX MAP # 18A-08-00-000B
INSTR. NO. 03002086
FORMER AREA
117.00± AC.
NEW AREA
116.91± AC.

HEREBY DEDICATED FOR PUBLIC USE

BOUNDARY LINE ADJUSTMENT

BEING THE PROPERTIES OF
G SQUARE INC
GPIN: P12D-3237-0683

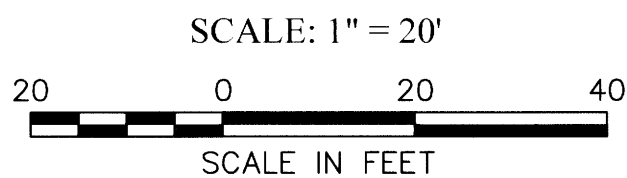
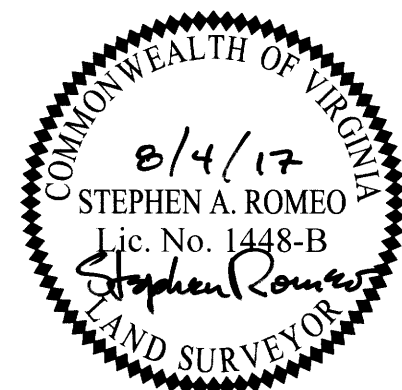
AND
YORK COUNTY
GPIN: P12D-3106-1058

NELSON DISTRICT, YORK COUNTY, VIRGINIA
DATE: 8/4/17 SHEET 2 OF 2



Transportation
Land Development
Environmental Services

351 McLaws Circle, Suite 3
Williamsburg, Virginia 23185
757 220 0500 • FAX 757 903 2794



APPROVED:
YORK COUNTY BOARD OF SUPERVISORS

BY: *Simon Kassel*

PLAT APPROVING AGENT

AUGUST 14, 2017

DATE:

STATE OF VIRGINIA, COUNTY OF YORK
IN THE CLERK'S OFFICE OF THE CIRCUIT COURT FOR THE
COUNTY OF YORK-POQUOSON THE 12TH DAY OF
AUG 2017, THIS MAP WAS PRESENTED AND
ADMITTED TO RECORD AS THE LAW DIRECTS AS
INSTRUMENT NO. 17-06-35244

TESTE: *[Signature]*
CLERK

BY: *[Signature]*

PROJECT NO: 38641.00

DRAWN BY: CRO

CHECKED BY: SAR