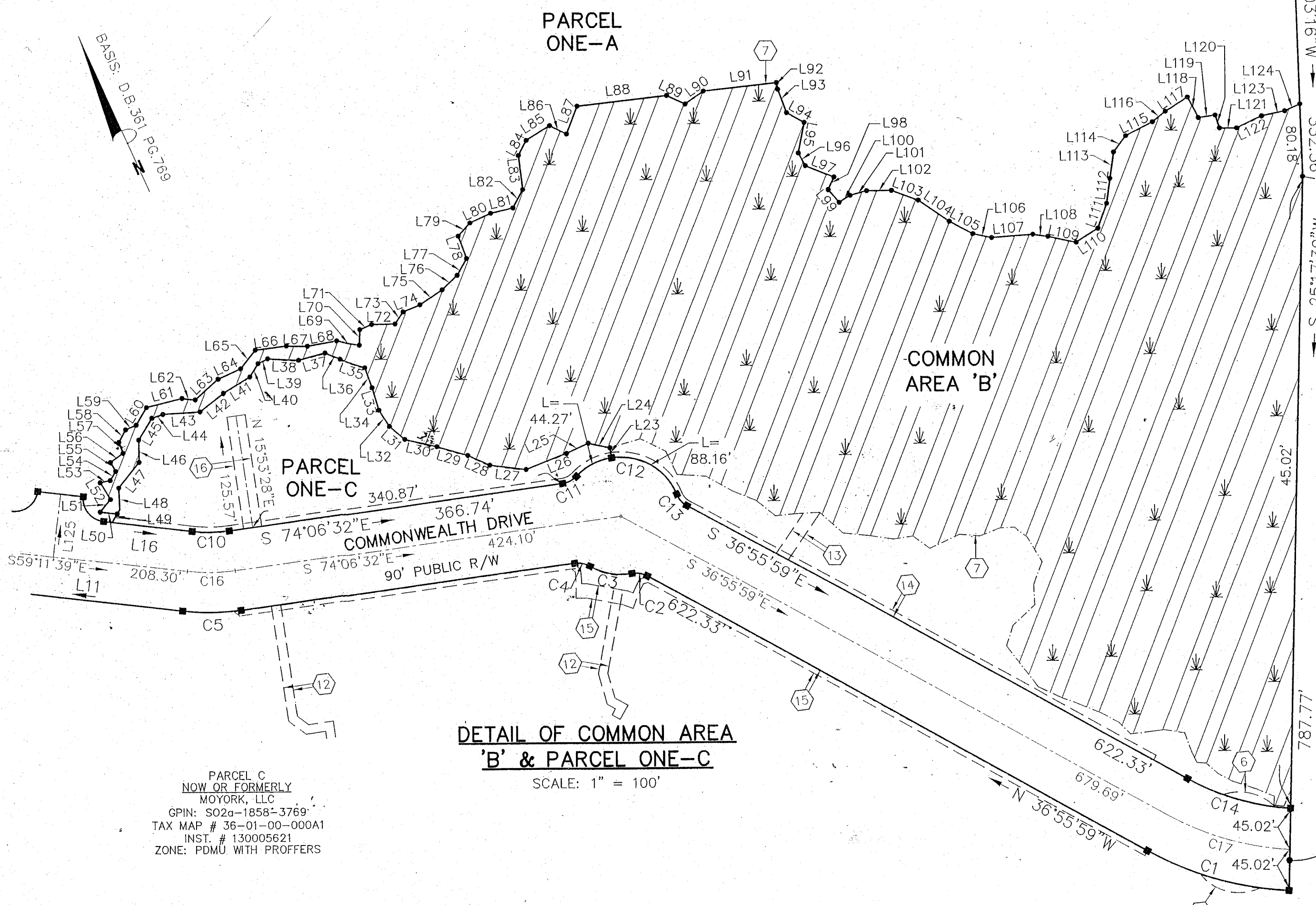
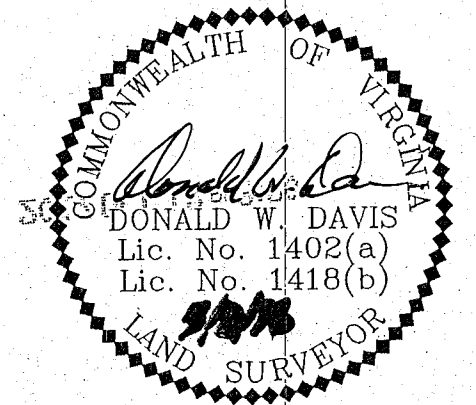
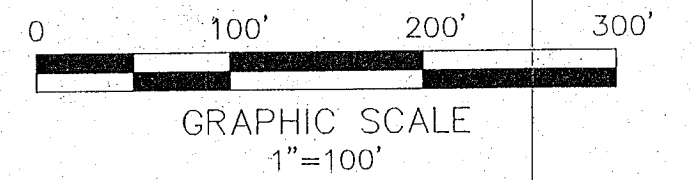


SUBDIVISION PLAT OF
NEW PARCEL ONE
 AND
 PLAT OF PUBLIC RIGHT OF WAY DEDICATION
COMMONWEALTH DRIVE - S.R. 1839
 BETHLE MAGISTERIAL DISTRICT
 COUNTY OF YORK, VIRGINIA
 SCALE: 1"=100' DATE: MAY 2, 2016
SHEET 3 OF 3
DAVIS & ASSOCIATES, P.C.
 LAND SURVEYORS AND PLANNERS
 3630 GEORGE WASHINGTON MEMORIAL HIGHWAY
 YORKTOWN, VIRGINIA 23693
 (757)867-8583

NOW OR FORMERLY
 HARMON J. COXTON, JR. & WYNEMA S. COXTON
 GPIN: S02b-3096-4278
 TAX MAP # 37-27-00-003
 INST. # 050008332
 ZONE: EO

NOW OR FORMERLY
 DALE LEE & CYNTHIA B. CUPP
 GPIN: S02b-2708-3666
 TAX MAP # 36-00-00-020
 INST. # 140015219
 ZONE: EO



DETAIL OF COMMON AREA 'B' & PARCEL ONE-C
 SCALE: 1" = 100'

PARCEL C
 NOW OR FORMERLY
 MOYORK, LLC
 GPIN: S02a-1858-3769
 TAX MAP # 36-01-00-000A1
 INST. # 130005621
 ZONE: PDMU WITH PROFFERS

NOTE:
 THIS RIGHT-OF-WAY IS PLATTED WITH THE INTENT
 OF BEING EXTENDED AND CONTINUED IN ORDER TO
 PROVIDE INGRESS AND EGRESS TO AND FROM
 FUTURE SUBDIVISIONS OR ADJACENT PROPERTIES

LINE DATA TABLE

LINE	BEARING	DISTANCE	LINE	BEARING	DISTANCE	LINE	BEARING	DISTANCE	LINE	BEARING	DISTANCE
L1	N 58°10'58" E	90.00'	L32	N 08°20'26" W	21.42'	L63	N 71°49'31" E	33.63'	L94	S 36°58'28" E	22.16'
L2	N 31°49'02" W	225.83'	L33	N 07°40'06" E	25.81'	L64	N 88°50'17" E	27.21'	L95	S 35°13'01" W	34.53'
L3	N 73°12'48" E	40.78'	L34	N 03°52'42" E	23.52'	L65	N 61°45'16" E	26.26'	L96	S 04°25'12" E	15.99'
L4	S 52°53'42" E	34.51'	L35	N 47°21'55" W	27.97'	L66	S 73°33'23" E	33.87'	L97	S 44°00'20" E	33.55'
L5	S 38°08'01" E	115.77'	L36	N 43°17'33" W	17.81'	L67	S 64°41'27" E	22.80'	L98	S 48°14'33" W	15.30'
L6	S 72°39'25" E	133.70'	L37	N 81°09'49" W	30.01'	L68	S 76°23'56" E	32.64'	L99	S 15°51'41" E	18.60'
L7	S 72°48'23" E	84.27'	L38	N 62°53'19" W	33.42'	L69	S 56°21'59" E	24.83'	L100	N 81°06'07" E	14.28'
L8	S 80°15'53" E	47.00'	L39	S 87°04'23" W	11.66'	L70	N 25°57'17" E	17.25'	L101	S 82°01'05" E	18.77'
L9	S 09°44'07" W	21.36'	L40	S 55°09'19" W	17.47'	L71	S 89°47'45" E	14.12'	L102	S 66°46'38" E	27.01'
L10	N 80°15'53" W	137.70'	L41	S 82°24'05" W	34.05'	L72	S 66°46'39" E	25.52'	L103	S 45°44'26" E	31.02'
L11	N 59°11'39" W	208.30'	L42	S 75°15'28" W	32.59'	L73	N 57°32'55" E	16.07'	L104	S 30°58'10" E	41.09'
L12	N 31°49'02" W	20.94'	L43	N 69°53'48" W	40.52'	L74	S 88°07'43" E	19.02'	L105	S 37°32'44" E	29.12'
L13	S 31°49'02" E	20.94'	L44	N 85°02'55" W	12.59'	L75	N 79°56'26" E	30.12'	L106	S 53°41'27" E	20.92'
L14	S 59°11'39" E	11.19'	L45	S 55°07'04" W	28.18'	L76	N 69°56'35" E	23.00'	L107	S 70°19'10" E	45.15'
L15	S 59°11'39" E	50.00'	L46	S 23°08'59" W	25.10'	L77	N 52°52'44" E	21.13'	L108	S 58°09'12" E	16.43'
L16	S 59°11'39" E	97.11'	L47	S 62°10'41" W	36.24'	L78	N 03°51'23" E	26.53'	L109	S 53°35'16" E	31.67'
L17	N 59°11'39" W	36.94'	L48	S 21°41'30" W	23.98'	L79	N 65°34'20" E	19.60'	L110	N 80°46'12" E	28.58'
L18	N 42°52'35" W	136.18'	L49	S 54°38'16" W	16.18'	L80	N 88°30'15" E	24.99'	L111	N 43°12'44" E	28.96'
L19	N 32°16'43" W	122.21'	L50	N 59°11'39" W	18.62'	L81	S 79°17'31" E	25.01'	L112	N 31°37'48" E	27.80'
L20	N 57°51'02" W	109.47'	L51	N 63°24'14" E	17.76'	L82	N 51°58'29" E	22.90'	L113	N 31°51'48" E	29.55'
L21	S 31°49'02" E	20.94'	L52	N 06°32'57" W	21.84'	L83	N 17°08'55" E	38.17'	L114	N 60°36'03" E	22.47'
L22	N 57°34'38" E	59.11'	L53	S 77°41'13" E	11.01'	L84	N 51°12'14" E	18.81'	L115	N 86°30'42" E	32.79'
L23	S 15°17'01" W	11.38'	L54	N 55°13'35" E	11.75'	L85	N 81°31'34" E	30.27'	L116	N 75°00'14" E	18.28'
L24	N 54°04'13" W	24.24'	L55	N 05°06'51" W	11.62'	L86	S 38°42'19" E	20.44'	L117	N 81°10'18" E	28.53'
L25	S 88°43'14" W	25.83'	L56	N 77°34'42" E	17.12'	L87	N 44°45'26" E	32.89'	L118	S 03°25'42" E	25.44'
L26	N 87°58'11" W	47.34'	L57	N 03°51'00" E	13.19'	L88	S 72°37'10" E	98.05'	L119	S 74°07'36" E	18.60'
L27	N 58°51'10" W	39.85'	L58	N 52°21'03" E	15.66'	L89	S 41°02'25" E	22.47'	L120	S 05°40'01" W	15.07'
L28	N 41°45'16" W	26.48'	L59	S 89°57'38" E	12.55'	L90	N 78°14'24" E	24.16'	L121	S 65°46'22" E	18.49'
L29	N 49°37'14" W	35.18'	L60	N 54°13'15" E	22.35'	L91	S 72°37'10" E	80.00'	L122	N 87°56'28" E	30.36'
L30	N 52°27'05" W	35.67'	L61	S 80°33'58" E	40.14'	L92	S 14°01'34" W	7.71'	L123	S 77°59'33" E	25.81'
L31	N 25°06'37" W	22.17'	L62	S 59°21'10" E	14.42'	L93	S 03°24'00" W	27.42'	L124	N 89°53'33" E	18.04'
						L125	N 30°48'21" E	70.00'			

CURVE DATA TABLE

#	DELTA	RADIUS	ARC	TANGENT	CHORD	CHORD DIRECTION
C1	26°04'19"	355.00'	161.54'	82.19'	160.15'	S 49°58'08"E
C2	39°19'57"	25.00'	17.16'	8.93'	16.83'	S 56°35'57"E
C3	41°29'21"	65.50'	47.43'	24.81'	46.40'	S 55°31'15"E
C4	39°19'57"	25.00'	17.16'	8.93'	16.83'	S 54°26'33"E
C5	14°54'53"	245.00'	63.78'	32.07'	63.60'	S 66°39'05"E
C6	27°22'37"	440.00'	210.24'	107.17'	208.24'	S 45°30'20"E
C7	27°22'37"	350.00'	167.24'	85.25'	165.65'	S 45°30'20"E
C8	90°00'00"	25.00'	39.27'	25.00'	35.36'	N 75°48'21"E
C9	90°00'00"	25.00'	39.27'	25.00'	35.36'	N 14°11'39"W
C10	14°54'53"	155.00'	40.35'	20.29'	40.23'	S 66°39'05"E
C11	39°19'57"	25.00'	17.16'	8.93'	16.83'	N 86°13'30"E
C12	115°50'27"	65.50'	132.43'	104.50'	111.00'	S 55°31'15"E
C13	39°19'57"	25.00'	17.16'	8.93'	16.83'	S 17°16'00"E
C14	25°29'39"	265.00'	117.91'	59.95'	116.94'	S 49°40'48"E
C15	27°22'37"	395.00'	188.74'	96.21'	186.95'	S 45°30'20"E
C16	14°54'53"	200.00'	52.06'	26.18'	51.92'	S 66°39'05"E
C17	25°29'39"	310.00'	139.73'	71.21'	138.55'	S 49°40'48"E

APPROVED

YORK COUNTY BOARD OF SUPERVISORS

BY: *Susan Kasul*
 PLAT APPROVING AGENT

DATE: **OCTOBER 12, 2017**

STATE OF VIRGINIA
 COUNTY OF YORK
 IN THE CLERK'S OFFICE OF THE YORK
 POQUOSON CIRCUIT COURT THIS **12th**
 DAY OF **October 2017** THIS MAP WAS
 PRESENTED AND ADMITTED TO RECORD AS
 THE LAW DIRECTS AS INSTRUMENT # **17009319**

TESTE: *Kristen N. Nelson*
 CLERK

BY: *Danny Logan &*