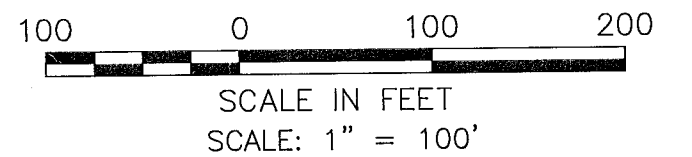
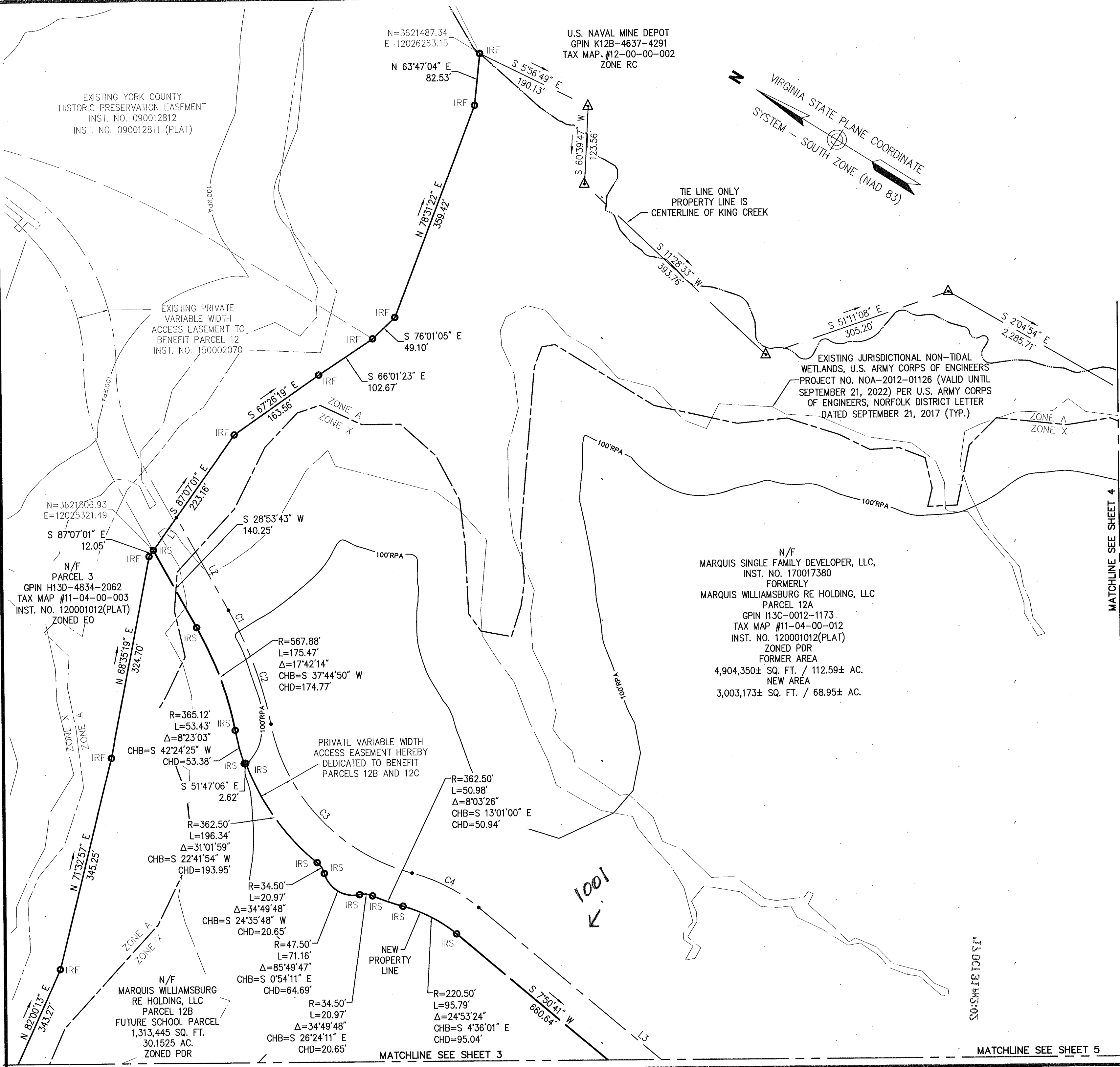


RESUBDIVISION OF PARCEL 12
 BEING THE PROPERTY OF
**MARQUIS WILLIAMSBURG
 RE HOLDING, LLC AND
 MARQUIS SINGLE FAMILY
 DEVELOPER, LLC.**

BRUTON DISTRICT, YORK COUNTY, VIRGINIA
 DATE: 10/27/2017
 SHEET 2 OF 6



vhb Transportation
 Land Development
 Environmental Services
 351 McLaws Circle, Suite 3
 Williamsburg, Virginia 23185
 757 220 0500 • FAX 757 903 2794

N/F
 MARQUIS SINGLE FAMILY DEVELOPER, LLC,
 INST. NO. 170017380
 FORMERLY
 MARQUIS WILLIAMSBURG RE HOLDING, LLC
 PARCEL 12A
 GPIN H13C-0012-1173
 TAX MAP #11-04-00-012
 INST. NO. 120001012(PLAT)
 ZONED PDR
 FORMER AREA
 4,904,350± SQ. FT. / 112.59± AC.
 NEW AREA
 3,003,173± SQ. FT. / 68.95± AC.

APPROVED:
 YORK COUNTY BOARD OF SUPERVISORS
 BY: *Erwin Kasul*
 PLAT APPROVING AGENT
OCTOBER 31, 2017
 DATE:

STATE OF VIRGINIA, COUNTY OF YORK
 IN THE CLERK'S OFFICE OF THE CIRCUIT COURT FOR THE
 COUNTY OF YORK-POQUOSON THE 31st DAY OF
October 2017, THIS MAP WAS PRESENTED AND
 ADMITTED TO RECORD AS THE LAW DIRECTS AS
 INSTRUMENT NO. 170020858
 TESTE: *Kristen N Nelson*
 CLERK
 BY: *Erwin Kasul, Deputy Clerk*

MATCHLINE SEE SHEET 4

MATCHLINE SEE SHEET 5

MATCHLINE SEE SHEET 3