

LINE	BEARING	LENGTH
L1	S65°22'28"E	46.61'
L2	N65°22'28"W	27.94'
L3	S65°22'28"E	22.95'
L4	N25°03'34"E	86.06'
L5	N89°55'25"E	70.32'
L6	S27°41'37"E	64.62'
L7	N59°01'02"E	66.71'

CURVE #	DELTA	RADIUS	LENGTH	TANGENT	CHORD	CHORD BEARING
C1	46°38'23"	270.0'	219.78'	116.39'	213.77'	N88°41'39"W
C2	43°20'31"	50.00'	37.82'	19.87'	36.93'	N43°42'12"W
C3	119°59'13"	60.00'	125.65'	103.90'	103.92'	S82°01'33"E
C4	146°41'47"	60.00'	153.62'	200.60'	114.97'	N35°22'05"W
C5	43°20'30"	50.00'	37.82'	19.87'	36.93'	S87°02'43"E
C6	266°41'01"	60.00'	279.27'	63.58'	87.27'	N24°37'33"E

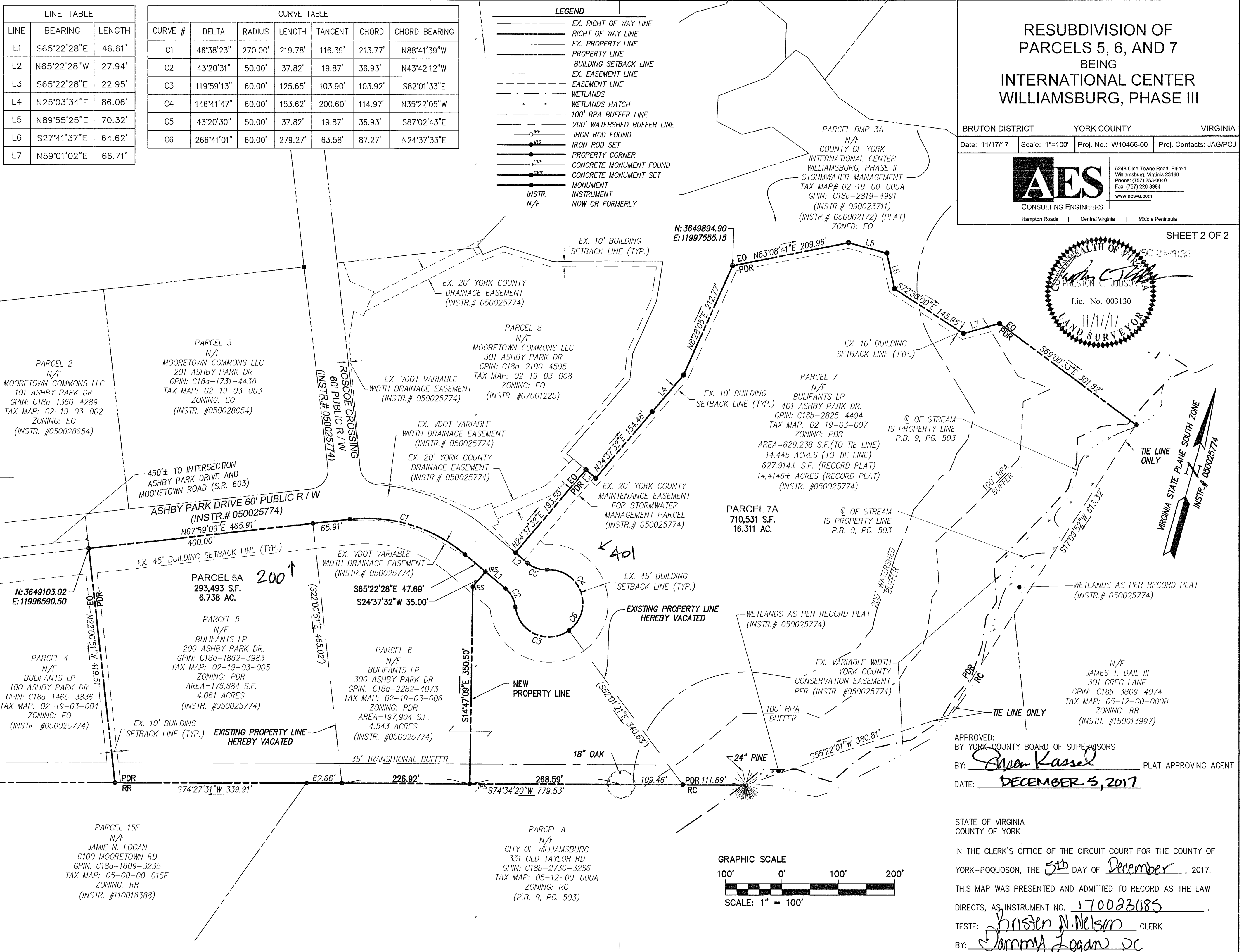
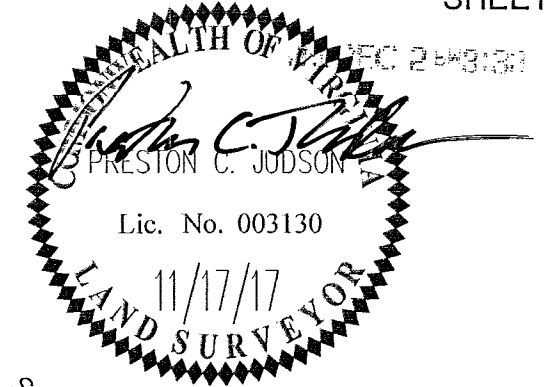
- LEGEND**
- EX. RIGHT OF WAY LINE
  - RIGHT OF WAY LINE
  - EX. PROPERTY LINE
  - PROPERTY LINE
  - BUILDING SETBACK LINE
  - EX. EASEMENT LINE
  - EASEMENT LINE
  - WETLANDS
  - WETLANDS HATCH
  - 100' RPA BUFFER LINE
  - 200' WATERSHED BUFFER LINE
  - IRF IRON ROD FOUND
  - IRS IRON ROD SET
  - CMF CONCRETE MONUMENT FOUND
  - CMS CONCRETE MONUMENT SET
  - MONUMENT
  - INSTR. INSTRUMENT
  - N/F NOW OR FORMERLY

# RESUBDIVISION OF PARCELS 5, 6, AND 7 BEING INTERNATIONAL CENTER WILLIAMSBURG, PHASE III

BRUTON DISTRICT YORK COUNTY VIRGINIA  
 Date: 11/17/17 Scale: 1"=100' Proj. No.: W10466-00 Proj. Contacts: JAG/PCJ

**AES**  
 CONSULTING ENGINEERS  
 5248 Olde Towne Road, Suite 1  
 Williamsburg, Virginia 23188  
 Phone: (757) 253-0040  
 Fax: (757) 226-8994  
 www.aesva.com  
 Hampton Roads | Central Virginia | Middle Peninsula

SHEET 2 OF 2



APPROVED:  
 BY: Susan Kassel PLAT APPROVING AGENT  
 DATE: DECEMBER 5, 2017

STATE OF VIRGINIA  
 COUNTY OF YORK  
 IN THE CLERK'S OFFICE OF THE CIRCUIT COURT FOR THE COUNTY OF YORK-POQUOSON, THE 5th DAY OF December, 2017.  
 THIS MAP WAS PRESENTED AND ADMITTED TO RECORD AS THE LAW DIRECTS, AS INSTRUMENT NO. 170023085  
 TESTE: Christen N. Nelson CLERK  
 BY: Jammy Logan DC

