
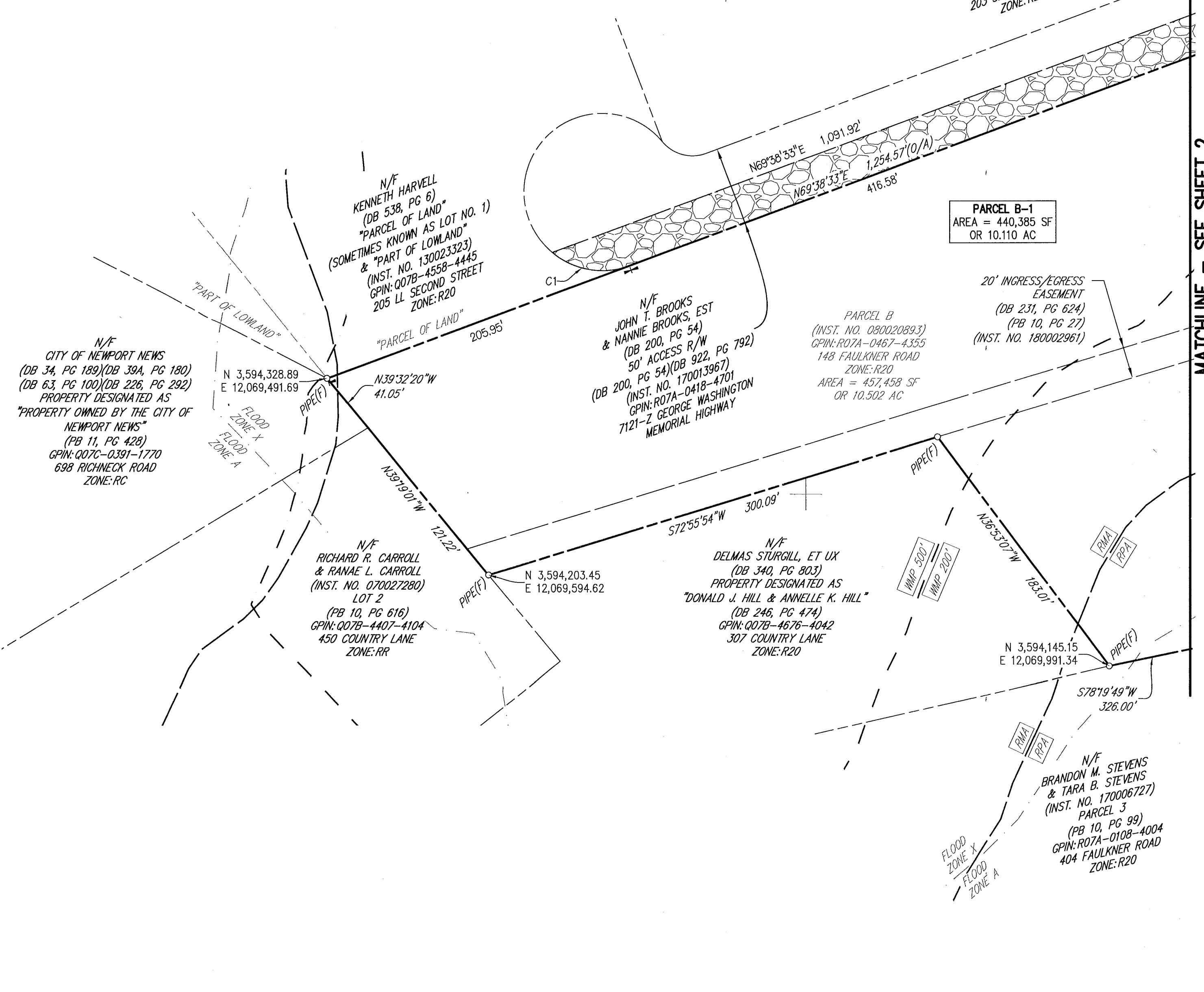


CURVE TABLE						
CURVE	LENGTH	RADIUS	BEARING	CHORD	DELTA	TANGENT
C1	52.36'	50.00'	N80° 21' 28"W	50.00'	60°00'02"	28.87'

SEE NOTE #3, SHEET 1

SUBDIVISION OF THE PROPERTY OF FAULKNER ROAD ASSOCIATES, LLC (PUMP STATION LOT) ON PARCEL B (INST. NO. 080020893)	GPIN: R07A-0467-4355 148 FAULKNER ROAD NELSON DISTRICT YORK COUNTY, VIRGINIA MAY 14, 2024
 <b>MSA</b> ENGINEERS   SCIENTISTS   SURVEYORS 5032 ROUSE DRIVE, SUITE 200   VIRGINIA BEACH, VA 23462 757.490.9264   MSAONLINE.COM	
REV: N/A	
DWN BY: WGS	
FB: CS 719, PG 71-75	
JOB#: 22022	
SCALE: 1" = 50'	
SHEET 3 OF 3	



MATCHLINE - SEE SHEET 2

**APPROVED**  
YORK COUNTY BOARD OF SUPERVISORS

BY: *Eason Kassel*  
PLAT APPROVING AGENT

DATE: SEPTEMBER 10, 2024

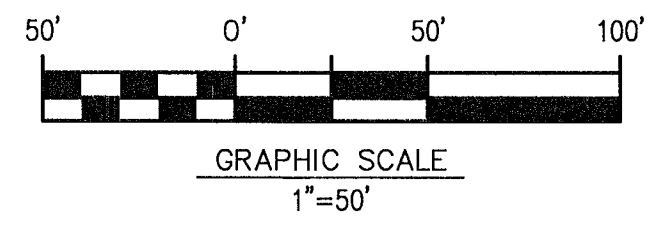
STATE OF VIRGINIA  
COUNTY OF YORK

IN THE CLERK'S OFFICE OF THE CIRCUIT COURT FOR THE COUNTY OF YORK, POQUOSON, ON THE 17th DAY OF September, 2024, THIS MAP WAS PRESENTED AND ADMITTED TO RECORD AS THE LAW DIRECTS AS INSTRUMENT NO. 24002612.

TESTE: *Kristen N. Nelson*, CLERK.

BY: *Kristi K. Kelly, DC*

- LEGEND**
- IRON PIN FOUND - PIN(F)
  - IRON PIN SET - PIN(S)
  - △ NAIL FOUND - NAIL(F)
  - ▲ NAIL SET - NAIL(S)
  - DRILL HOLE FOUND - DH(F)
  - DRILL HOLE SET - DH(S)
  - CONC. STEEL PIN FOUND - MON(F)
  - CONC. STEEL PIN SET - MON(S)



**EXISTING EASEMENT KEYNOTES**

E1 25' PUBLIC INGRESS/EGRESS, DRAINAGE, & UTILITY EASEMENT (INST. NO. 180019616)

**PROPOSED EASEMENT & CONVEYANCE LEGEND**

Denotes 25' PUBLIC INGRESS/EGRESS, DRAINAGE, & UTILITY EASEMENT HEREBY QUITCLAIMED TO YORK COUNTY AREA = 26,983 SF OR 0.619 AC

