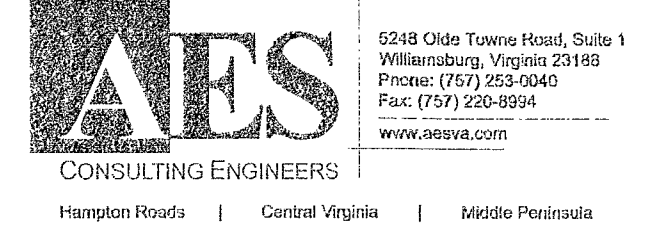


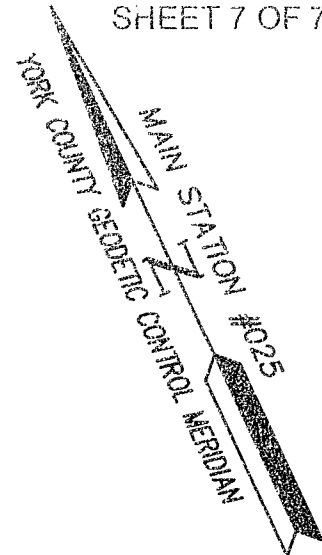
PLAT OF CORRECTION  
 PLAT OF SUBDIVISION  
 WALLER MILL HEIGHTS  
 PHASE 1C

BRUTON DISTRICT  
 YORK COUNTY, VIRGINIA

Date: 02/09/24 Scale: 1"=20' Proj. No.: 9654-05 Proj. Contacts: PET/SJB



SHEET 7 OF 7

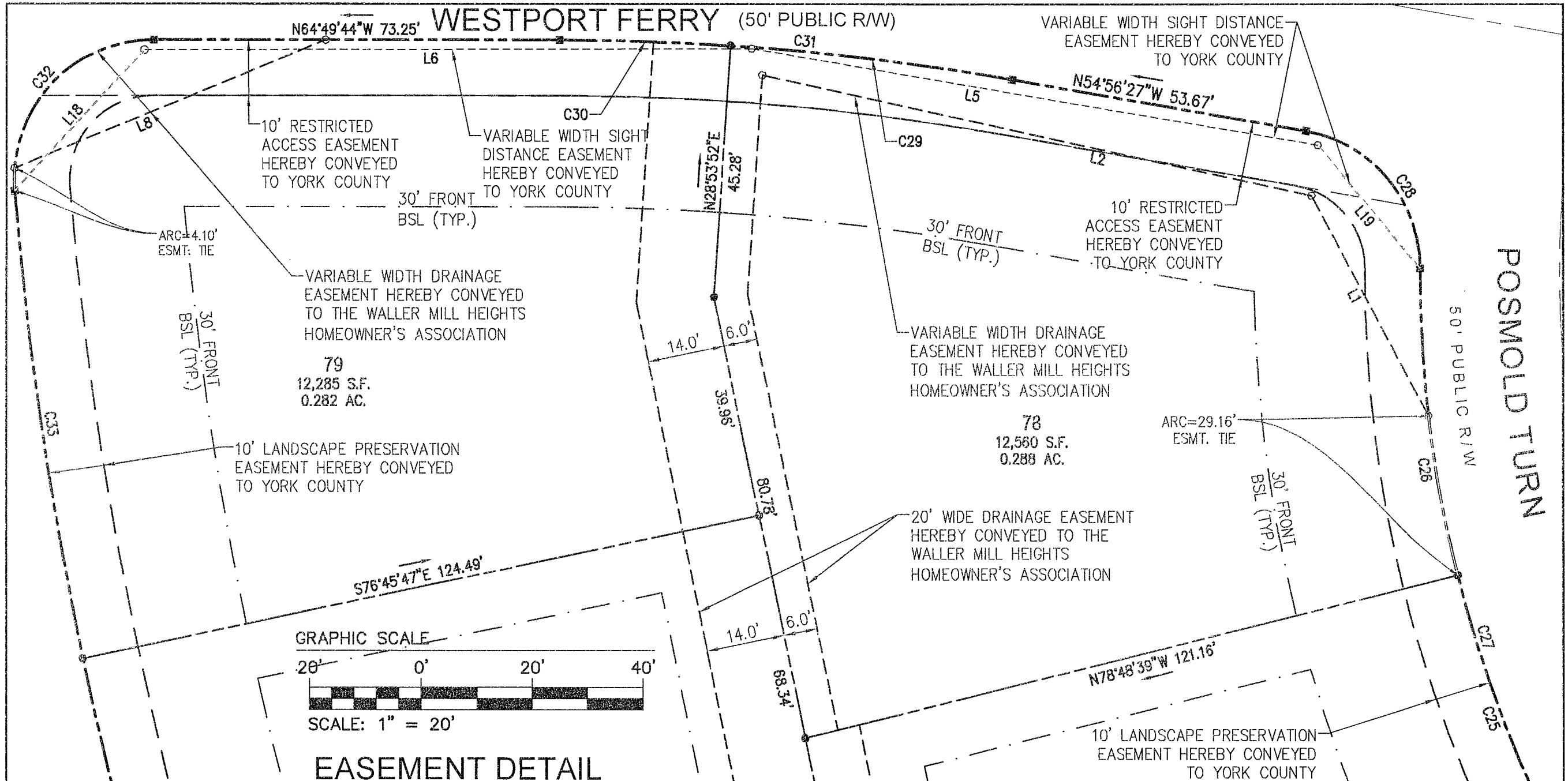


CURVE TABLE							CURVE TABLE							CURVE TABLE						
CURVE #	DELTA	RADIUS	LENGTH	TANGENT	CHORD	CHORD BEARING	CURVE #	DELTA	RADIUS	LENGTH	TANGENT	CHORD	CHORD BEARING	CURVE #	DELTA	RADIUS	LENGTH	TANGENT	CHORD	CHORD BEARING
C1	2'16"42"	525.00'	20.88'	10.44'	20.87'	N63°41'23"W	C28	80°17'15"	25.00'	35.03'	21.08'	32.24'	N14°47'50"W	C55	3°20'22"	1030.00'	60.03'	30.03'	60.03'	S4°28'13"E
C2	7°36'35"	525.00'	69.73'	34.92'	69.68'	S58°44'45"E	C29	6°09'41"	475.00'	51.08'	25.56'	51.06'	S58°01'18"E	C56	3°20'22"	1030.00'	60.03'	30.03'	60.03'	S1°07'51"E
C3	9°53'17"	525.00'	90.60'	45.42'	90.49'	S59°53'06"E	C30	3°43'36"	475.00'	30.89'	15.45'	30.89'	S62°57'56"E	C57	3°20'22"	1030.00'	60.03'	30.03'	60.03'	S2°12'31"W
C4	10°41'10"	25.00'	4.66'	2.34'	4.66'	N60°17'02"W	C31	9°53'17"	475.00'	81.98'	41.09'	81.87'	N59°53'06"W	C58	3°20'22"	1030.00'	60.03'	30.03'	60.03'	S5°32'54"W
C5	59°50'33"	25.00'	26.11'	14.39'	24.94'	S84°27'06"W	C32	94°48'53"	25.00'	41.37'	27.19'	36.81'	S67°45'49"W	C59	3°20'22"	1030.00'	60.03'	30.03'	60.03'	S8°53'16"W
C6	70°31'44"	25.00'	30.77'	17.68'	28.87'	N89°47'41"E	C33	7°07'10"	683.50'	84.93'	42.52'	84.87'	N16°47'48"E	C60	30°26'39"	1030.00'	547.29'	280.27'	540.87'	N4°39'52"W
C7	83°22'00"	50.00'	72.75'	44.52'	66.50'	N83°47'11"W	C34	6°57'58"	683.50'	83.10'	41.60'	83.05'	N9°45'14"E	C63	1°17'20"	975.00'	21.93'	10.97'	21.93'	N11°12'07"E
C8	54°29'47"	50.00'	47.56'	25.75'	45.78'	N14°51'17"W	C35	6°57'58"	683.50'	83.10'	41.60'	83.05'	N2°47'16"E	C64	3°47'22"	975.00'	64.49'	32.26'	64.47'	N8°39'46"E
C9	66°31'33"	50.00'	58.05'	32.80'	54.85'	S45°39'23"W	C36	6°57'58"	683.50'	83.10'	41.60'	83.05'	N4°10'43"W	C65	5°09'20"	975.00'	87.73'	43.90'	87.70'	N4°11'25"E
C10	46°08'23"	50.00'	40.26'	21.30'	39.19'	S78°00'39"E	C37	6°57'58"	683.50'	83.10'	41.60'	83.05'	N11°08'41"W	C66	5°10'10"	975.00'	87.97'	44.01'	87.94'	N0°58'20"W
C11	250°31'44"	50.00'	218.63'	---	81.65'	S0°12'19"E	C38	5°15'32"	683.50'	62.73'	31.39'	62.71'	N17°15'26"W	C67	5°17'16"	975.00'	89.98'	45.02'	89.95'	N6°12'03"W
C12	106°19'50"	25.00'	46.40'	33.38'	40.02'	S71°53'38"W	C39	40°14'34"	683.50'	480.07'	250.42'	470.26'	S0°14'06"W	C68	4°56'54"	975.00'	84.21'	42.13'	84.18'	N11°19'09"W
C13	41°51'09"	175.00'	127.83'	66.92'	125.01'	S2°11'51"E	C40	42°56'49"	25.00'	18.74'	9.83'	18.30'	N41°21'36"W	C69	5°04'10"	975.00'	86.27'	43.16'	86.24'	N16°19'41"W
C14	48°11'23"	25.00'	21.03'	11.18'	20.41'	S47°13'07"E	C41	27°34'55"	25.00'	12.03'	6.14'	11.92'	N76°37'28"W	C70	29°25'13"	975.00'	500.64'	255.97'	495.16'	S4°09'10"E
C15	21°44'53"	50.00'	18.98'	9.61'	18.87'	N60°24'39"W	C42	70°31'44"	25.00'	30.77'	17.68'	28.87'	S55°09'03"E	C71	91°01'26"	25.00'	39.72'	25.45'	35.67'	S64°22'29"E
C16	94°05'36"	50.00'	82.11'	53.71'	73.19'	N2°29'24"W	C43	94°56'20"	50.00'	82.85'	54.51'	73.69'	N42°56'45"W	C72	88°43'04"	25.00'	38.71'	24.45'	34.96'	N25°45'16"E
C17	28°38'52"	50.00'	25.00'	12.77'	24.74'	N58°52'50"E	C44	54°43'52"	50.00'	47.76'	25.88'	45.97'	N31°53'20"E	C73	5°40'49"	733.50'	72.72'	36.39'	72.69'	S15°45'51"E
C18	32°21'27"	50.00'	28.24'	14.51'	27.86'	N89°23'00"E	C45	49°36'48"	50.00'	43.30'	23.11'	41.96'	N84°03'41"E	C74	5°37'27"	733.50'	72.00'	36.03'	71.97'	S10°06'43"E
C19	50°33'45"	50.00'	44.12'	23.61'	42.71'	S49°09'24"E	C46	51°14'44"	50.00'	44.72'	23.98'	43.24'	S45°30'34"E	C75	5°37'27"	733.50'	72.00'	36.03'	71.97'	S4°29'16"E
C20	48°57'29"	50.00'	42.72'	22.76'	41.44'	S0°36'13"W	C47	250°31'44"	50.00'	218.63'	---	81.65'	S34°50'57"W	C76	5°37'27"	733.50'	72.00'	36.03'	71.97'	S1°08'11"W
C21	276°22'03"	50.00'	241.18'	---	66.67'	S66°53'56"W	C48	90°00'00"	25.00'	39.27'	25.00'	35.36'	N64°53'12"W	C77	5°37'27"	733.50'	72.00'	36.03'	71.97'	S6°45'38"W
C22	48°11'23"	25.00'	21.03'	11.18'	20.41'	N0°58'16"E	C49	90°00'00"	25.00'	39.27'	25.00'	35.36'	S25°06'48"W	C78	5°37'27"	733.50'	72.00'	36.03'	71.97'	S12°23'04"W
C23	2°01'41"	225.00'	7.96'	3.98'	7.96'	S22°06'35"E	C50	0°22'32"	1030.00'	6.75'	3.38'	6.75'	S19°41'55"E	C79	5°47'44"	733.50'	74.20'	37.13'	74.16'	S18°05'40"W
C24	16°30'59"	225.00'	64.86'	32.66'	64.64'	S12°50'15"E	C51	3°20'17"	1030.00'	60.01'	30.01'	60.00'	S17°50'31"E	C80	39°35'48"	733.50'	506.92'	264.05'	496.89'	N1°11'38"E
C25	15°46'06"	225.00'	61.92'	31.16'	61.73'	S3°18'18"W	C52	3°21'13"	1030.00'	60.29'	30.15'	60.28'	S14°29'45"E	C81	85°49'17"	25.00'	37.45'	23.24'	34.04'	N21°55'06"W
C26	14°09'26"	225.00'	55.60'	27.94'	55.45'	S18°16'04"W	C53	3°20'22"	1030.00'	60.03'	30.03'	60.03'	S11°08'58"E							
C27	46°26'32"	225.00'	182.38'	96.53'	177.43'	N2°07'31"E	C54	3°20'22"	1030.00'	60.03'	30.03'	60.03'	S7°48'35"E							

NOTE: CURVE LABELS C61 AND C62 HAVE BEEN INTENTIONALLY OMITTED

LINE	BEARING	LENGTH
L1	N3°03'58"W	44.78'
L2	N52°30'29"W	101.23'
L3	S76°17'22"W	42.00'
L4	S75°44'53"E	19.79'
L5	N55°13'09"W	103.36'
L6	N64°57'17"W	109.57'
L7	S13°32'58"E	46.48'
L8	N87°08'00"W	60.61'
L9	N39°17'35"W	56.23'
L10	N76°44'16"W	72.68'
L11	S44°23'56"E	66.45'
L12	S21°27'04"E	54.13'
L18	N67°45'49"E	34.37'
L19	S14°47'50"E	28.92'

NOTE: LINE LABELS L-13, 14, 15, 16 AND 17 HAVE BEEN INTENTIONALLY OMITTED



LEGEND	
---	PROPERTY LINE
---	RIGHT-OF-WAY LINE
---	BUILDING SETBACK LINE (BSL)
---	DRAINAGE EASEMENT
---	UTILITY EASEMENT
---	SIGHT EASEMENT
□	CMF CONCRETE MONUMENT FOUND
○	IRF IRON ROD FOUND
■	CONCRETE MONUMENT SET
●	IRON ROD SET
---	BSL BUILDING SETBACK LINE (BSL)
---	ESMT EASEMENT
+	PROPOSED RPA SIGN
▨	WETLANDS
▭	RPA RESOURCE PROTECTION AREA
▭	RMA RESOURCE MANAGEMENT AREA

APPROVED:  
 BY YORK COUNTY BOARD OF SUPERVISORS  
 BY: *Dawn Kaul* PLAT APPROVING AGENT  
 DATE: OCTOBER 16, 2024  
 STATE OF VIRGINIA  
 COUNTY OF YORK  
 IN THE CLERK'S OFFICE OF THE CIRCUIT COURT FOR THE COUNTY OF YORK-POQUOSON, THE 17 DAY OF October, 2024  
 THIS MAP WAS PRESENTED AND ADMITTED TO RECORD AS THE LAW DIRECTS, AS INSTRUMENT NO. 240014168  
 TESTE: KRISTEN N. NELSON, CLERK CLERK  
 BY: *Kevin Stodolc*