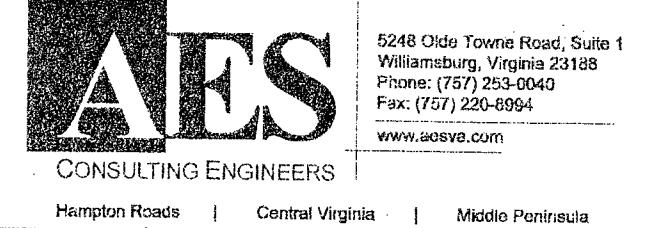


PLAT OF SUBDIVISION

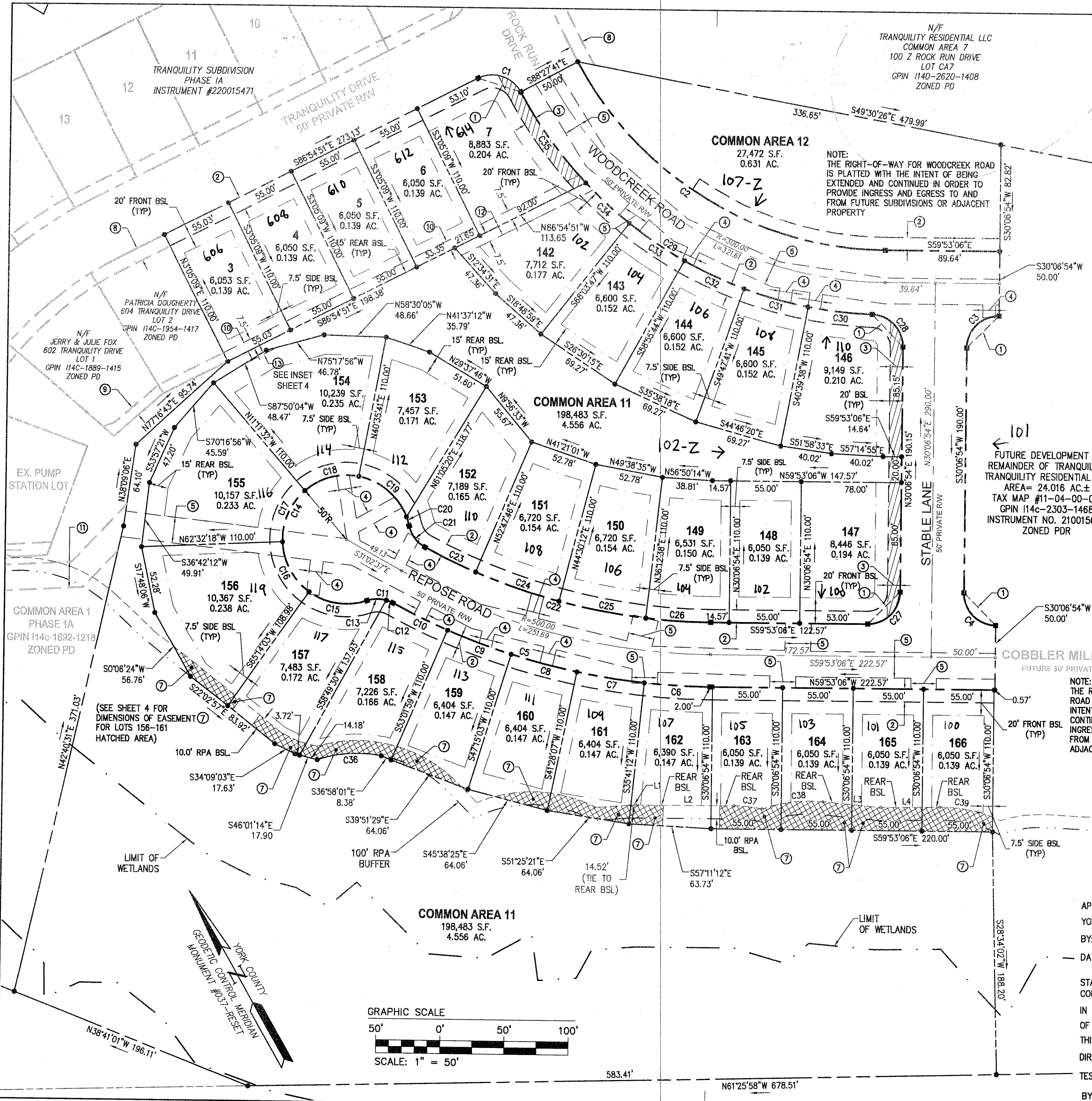
TRANQUILITY PHASE IIA

BRUTON DISTRICT COUNTY OF YORK VIRGINIA
Date: 10-07-24 Scale: 1"=50' Proj. No.: W10483-01 Proj. Contacts: SJB/TRS



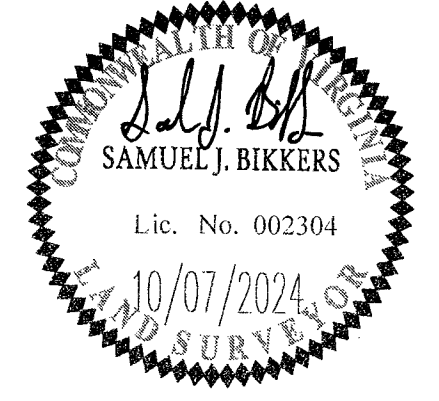
EASEMENT LEGEND SHEET 3 OF 5

- 1 VARIABLE WIDTH SIGHT EASEMENT HEREBY CONVEYED TO YORK COUNTY.
2 10' LANDSCAPE PRESERVATION EASEMENT HEREBY CONVEYED TO YORK COUNTY.
3 10' RESTRICTED ACCESS EASEMENT COLLOCATED WITH THE 10' LANDSCAPE PRESERVATION EASEMENT HEREBY CONVEYED TO YORK COUNTY.
4 10' UTILITY EASEMENT HEREBY CONVEYED TO YORK COUNTY.
5 20' UTILITY EASEMENT HEREBY CONVEYED TO YORK COUNTY.
7 VARIABLE WIDTH RETAINING WALL MAINTENANCE EASEMENT HEREBY CONVEYED TO THE TRANQUILITY HOMEOWNERS ASSOCIATION, INC. (NO EXCAVATION OR GRADE ALTERATION ARE PERMITTED TO INTERIOR AREA BEHIND RETAINING WALL AFTER INSTALLATION).
8 EXISTING 10' YORK COUNTY LANDSCAPE PRESERVATION EASEMENT, TRANQUILITY PHASE IA, INSTR. #220015471.
9 EXISTING VARIABLE WIDTH TRANQUILITY HOMEOWNERS ASSOCIATION, INC. DRAINAGE EASEMENT INSTR. #220015471.
10 7.5' DRAINAGE EASEMENT HEREBY CONVEYED TO THE TRANQUILITY HOMEOWNERS ASSOCIATION, INC.
11 EXISTING 20' YORK COUNTY UTILITY EASEMENT INSTR. #220015471.
12 15' DRAINAGE EASEMENT HEREBY CONVEYED TO THE TRANQUILITY HOMEOWNERS ASSOCIATION, INC.
13 VARIABLE WIDTH DRAINAGE EASEMENT HEREBY CONVEYED TO THE TRANQUILITY HOMEOWNERS ASSOCIATION, INC.



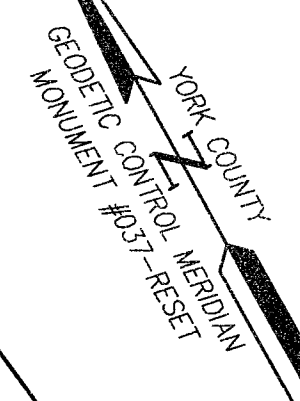
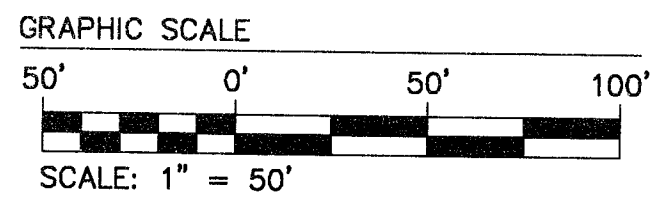
NOTE: THE RIGHT-OF-WAY FOR REPOSE ROAD IS PLATTED WITH THE INTENT OF BEING EXTENDED AND CONTINUED IN ORDER TO PROVIDE INGRESS AND EGRESS TO AND FROM FUTURE SUBDIVISIONS OR ADJACENT PROPERTY

SEE SHEET 5 FOR SURVEY LEGEND AND FOR LINE AND CURVE DATA TABLES



APPROVED: YORK COUNTY BOARD OF SUPERVISORS BY: Susan Kassel PLAT APPROVING AGENT DATE: DECEMBER 9, 2024

STATE OF VIRGINIA COUNTY OF YORK IN THE CLERK'S OFFICE OF THE CIRCUIT COURT FOR THE COUNTY OF YORK-POQUOSON THE 10 DAY OF December, 2024 THIS MAP WAS PRESENTED AND ADMITTED TO RECORD AS THE LAW DIRECTS, AS INSTRUMENT NO. 24006586 TESTE: KRISTEN N. NELSON, CLERK CLERK BY: [Signature]



Vertical text on the left edge of the page, likely a page number or reference.