

SUFFOLK DISTRICT DESIGN UNIT

Power Lines Are The Property Of Virginia Electric And Power Co.
General Office Pamoka Ave. & G St.
Hampton, Va.

Telephone Poles And Curred Telephone Cable Are The Property Of The City Telephone Co. Virginia.
2021 Riverdale Plaza
Hampton, Va.

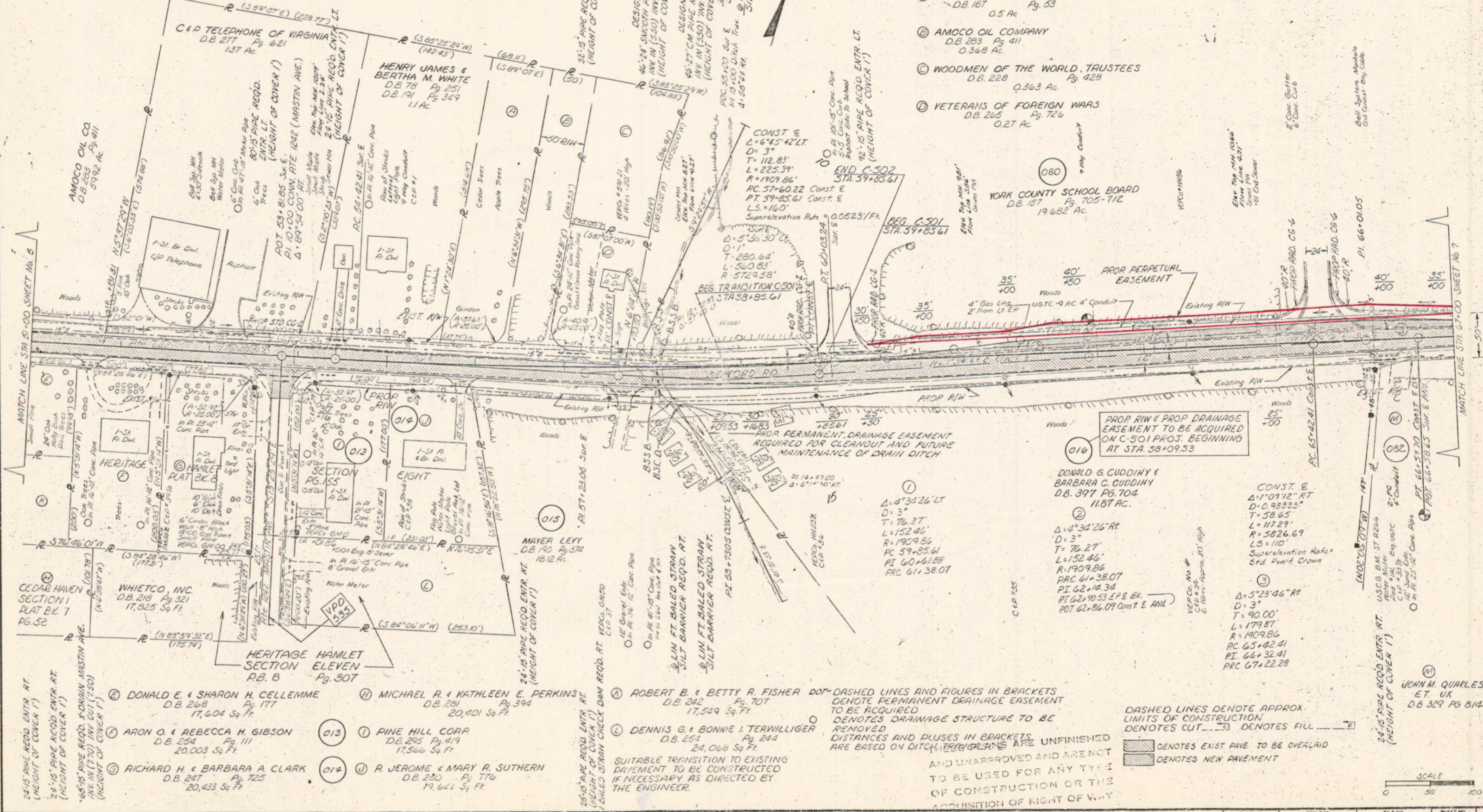
Gas Lines Are The Property Of Virginia Electric And Power Company

Water Lines Are The Property Of City Of Newport News,
(Newport News Water Works Commission)
Newport News, Va.

Sewer Lines Are The Property Of York County, Va.

DESIGN FEATURES RELATING TO CONSTRUCTION OR TO REGULATION AND CONTROL OF TRAFFIC MAY BE SUBJECT TO CHANGE AS DEEMED NECESSARY BY THE DEPARTMENT.

REVISED	FHWA REGION	STATE	FEDERAL AID PROJECT	ROUTE	STATE PROJECT	SHEET NO.
	3	VA.		622	0622-099-133, C-501, C-502	6



- (A) HENRY J. & BERTHA M. WHITE
D.B. 167 Pg. 53
0.5 Ac
- (B) AMOCO OIL COMPANY
D.B. 283 Pg. 411
0.368 Ac
- (C) WOODMEN OF THE WORLD, TRUSTEES
D.B. 228 Pg. 428
0.363 Ac
- (D) VETERANS OF FOREIGN WARS
D.B. 265 Pg. 726
0.27 Ac

YORK COUNTY SCHOOL BOARD
D.B. 157 Pg. 705-712
19.682 Ac

DONALD G. CUDDIHY & BARBARA C. CUDDIHY
D.B. 397 Pg. 704
11.87 Ac

CONST. E
Δ=1°09'12" RT
D=3"
T=58.65'
L=112.29'
R=1909.86'
LS=110'
Superelevation Rate = Std. Pvm't. Crown

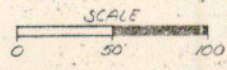
CONST. E
Δ=5°23'46" RT
D=3"
T=90.00'
L=179.87'
R=1909.86'
PC 65+42.41
PI 66+32.41
PRC 67+22.28

- (E) DONALD E. & SHARON H. CELLEMME
D.B. 268 Pg. 177
17,604 Sq. Ft.
- (F) ARON O. & REBECCA H. GIBSON
D.B. 254 Pg. 111
20,003 Sq. Ft.
- (G) RICHARD H. & BARBARA A. CLARK
D.B. 247 Pg. 725
20,423 Sq. Ft.
- (H) MICHAEL R. & KATHLEEN E. PERKINS
D.B. 281 Pg. 394
20,401 Sq. Ft.
- (I) PINE HILL CORP.
D.B. 295 Pg. 419
17,566 Sq. Ft.
- (J) R. JEROME & MARY R. SUTHERN
D.B. 250 Pg. 776
19,661 Sq. Ft.
- (K) ROBERT B. & BETTY R. FISHER
D.B. 242 Pg. 707
17,549 Sq. Ft.
- (L) DENNIS G. & BONNIE I. TERWILLIGER
D.B. 254 Pg. 244
24,068 Sq. Ft.

DOTT-DASHED LINES AND FIGURES IN BRACKETS DENOTE PERMANENT DRAINAGE EASEMENT TO BE ACQUIRED
DENOTES DRAINAGE STRUCTURE TO BE REMOVED
DISTANCES AND PLUSSES IN BRACKETS ARE BASED ON DITCH TRAVEL LINES ARE UNFINISHED AND UNAPPROVED AND ARE NOT TO BE USED FOR ANY TYPE OF CONSTRUCTION OR THE ACQUISITION OF RIGHT OF WAY

DASHED LINES DENOTE APPROX. LIMITS OF CONSTRUCTION
DENOTES CUT
DENOTES FILL

███ DENOTES EXIST. PAVE. TO BE OVERLAID
███ DENOTES NEW PAVEMENT



DESIGNED BY: E.W. GRIFFIN
CHECKED BY: P.L. BLANCHARD
REVISIONS BY: D.M. DANIELS

PLAN NO.	PROJECT	FILE NO.	SHEET NO.
A	0622-099-133, C-501, C-502		6