

SUFFOLK DISTRICT DESIGN UNIT

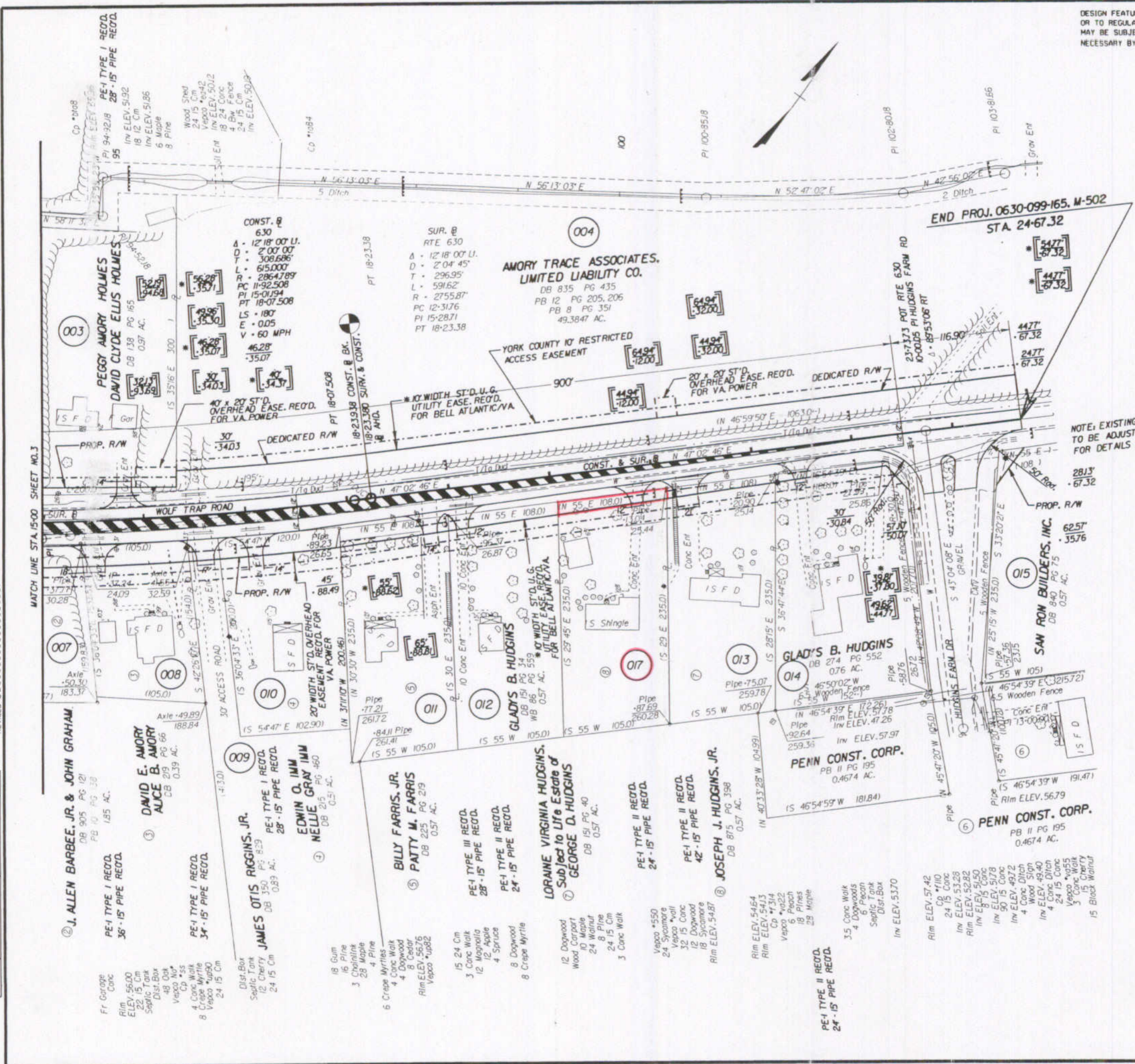
DESIGN FEATURES RELATING TO CONSTRUCTION OR TO REGULATION AND CONTROL OF TRAFFIC MAY BE SUBJECT TO CHANGE AS DEEMED NECESSARY BY THE DEPARTMENT

REVISED	FHWA REGION	STATE	FEDERAL AID PROJECT	ROUTE	STATE PROJECT	SHEET NO.
10-07-96 09-03-97 10-09-97 02-12-98	3	VA.		630	0630-099-165.M-502	4

SUPERVISED BY: E. N. HOLLOWELL
 DESIGNED BY: D. B. WINSLOW
 CAD OPERATOR: [Name]
 REVISIONS BY:

NO.	DATE	DESCRIPTION

02/11/98 15.30(4)



NOTE: EXISTING WATER VALVE BOX TO BE ADJUSTED RT. STA. 23+60. FOR DETAILS SEE SHEET NO. 26.

— — — — — DENOTES PROPOSED TEMPORARY FILTER BARRIER.

SUITABLE TRANSITION TO EXISTING PAVEMENT TO BE CONSTRUCTED IF NECESSARY AS DIRECTED BY THE PROJECT ENGINEER.

Note: Figures in brackets and dot-dashed lines denote Permanent Easements.

