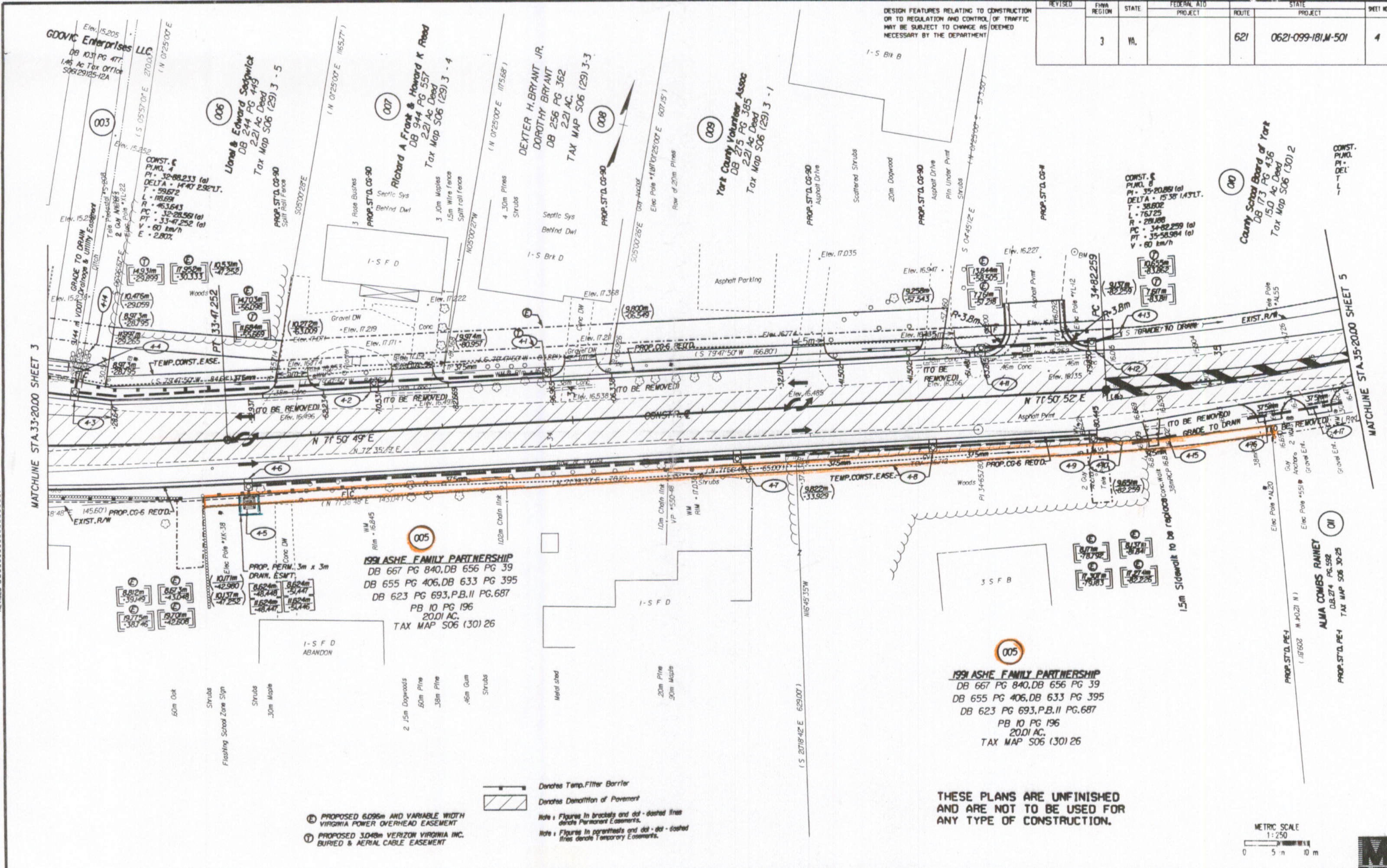


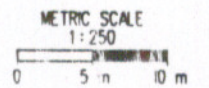
Design File - c:\documents and settings\jason\371501\3715004.dwg Design Issues on - 143 Ref. File - c:\documents and settings\jason\371501\3715004.dwg Levels On - 140,162,63 Ref. File - c:\documents and settings\jason\371501\3715004.dwg Levels On - 143 Ref. File - c:\documents and settings\jason\371501\3715004.dwg Levels On - 143 Ref. File - c:\documents and settings\jason\371501\3715004.dwg Levels On - 143 Ref. File - c:\documents and settings\jason\371501\3715004.dwg Levels On - 143 Ref. File - c:\documents and settings\jason\371501\3715004.dwg Levels On - 143 Ref. File - c:\documents and settings\jason\371501\3715004.dwg Levels On - 143 Ref. File - c:\documents and settings\jason\371501\3715004.dwg Levels On - 143

SUFFOLK DISTRICT DESIGN UNIT

REVISED	FEMA REGION	STATE	FEDERAL AID PROJECT	ROUTE	STATE PROJECT	SHEET NO.
	3	VA.		621	0621-099-181M-501	4



THESE PLANS ARE UNFINISHED AND ARE NOT TO BE USED FOR ANY TYPE OF CONSTRUCTION.



SURVEYED BY: J.T. SM/AGE, JR. 751-925-2662  
 SUPERVISED BY: K. BAUTTS/KIDD, 751-925-3595  
 DESIGNED BY: K.F. BATTEN, 751-925-1556  
 CAD OPERATOR: bautek@cs.com  
 REVISIONS BY:

- PROPOSED 6.096m AND VARIABLE WIDTH VIRGINIA POWER OVERHEAD EASEMENT
- PROPOSED 3.048m VERIZON VIRGINIA INC. BURIED & AERIAL CABLE EASEMENT

Denotes Temp. Filter Barrier  
 Denotes Denotification of Pavement  
 Note: Figures in brackets and dot-dashed lines denote Permanent Easements.  
 Note: Figures in parentheses and dot-dot-dashed lines denote Temporary Easements.

B/8/01 07:35:32