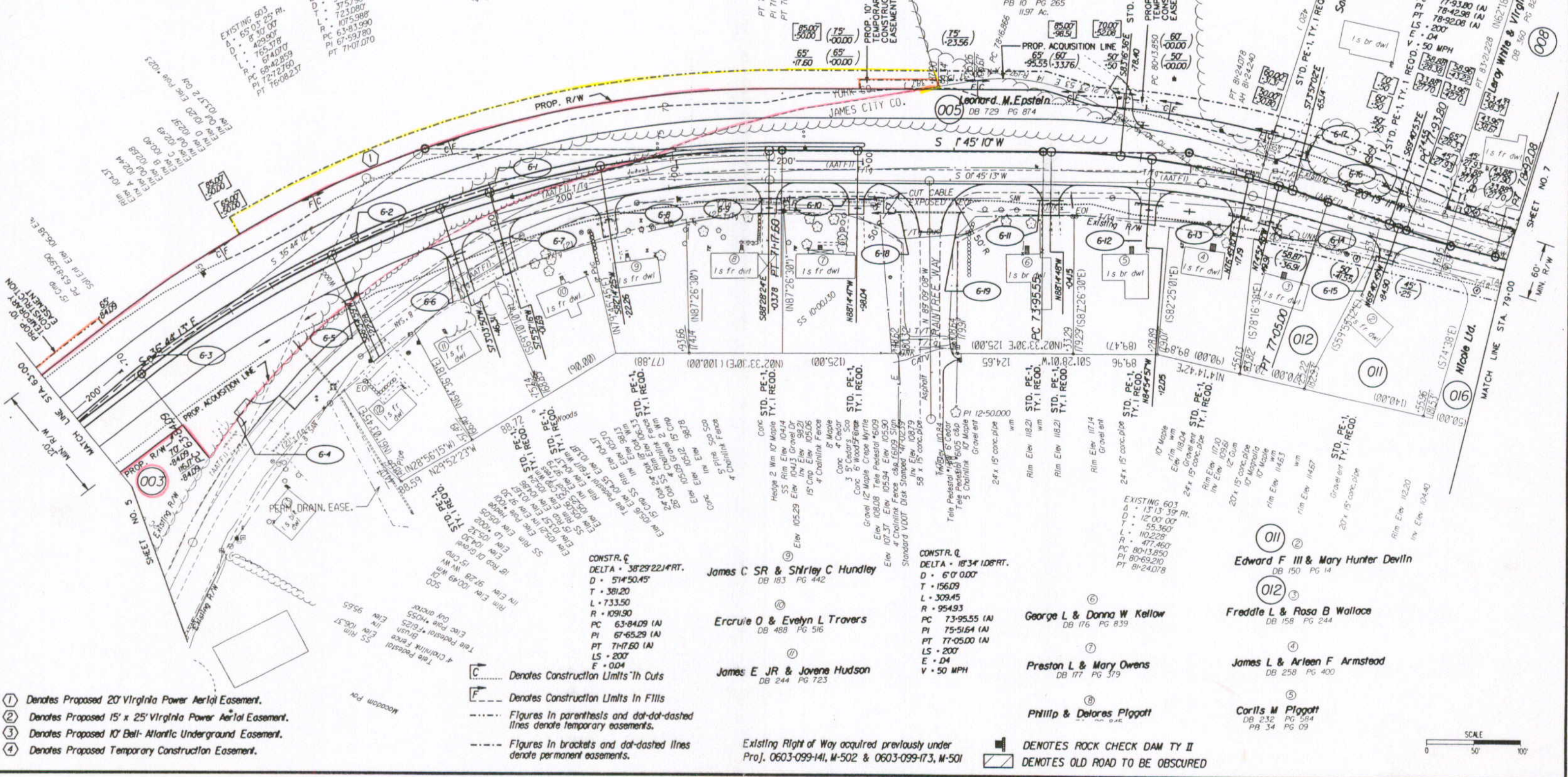


SUFFOLK DISTRICT DESIGN UNIT

- 6-1 1" STD. DROP INLET DI-3B, L-8 RECD.
INV. 102.54, HEIGHT 2.44'
- 6-2 150' x 15" CONC. PIPE RECD.
INV. IN (102.59), INV. OUT (102.03)
HEIGHT OF COVER 10'
- 6-3 1" STD. DROP INLET DI-3F, L-6 RECD.
INV. 102.03, HEIGHT 2.44'
- 6-4 250' x 15" CONC. PIPE RECD.
INV. IN (102.03), INV. OUT (101.22)
HEIGHT OF COVER 15'
- 6-5 1" STD. DROP INLET DI-3A RECD.
INV. 101.22, HEIGHT 3.32'
- 6-6 130' x 15" CONC. PIPE RECD.
INV. IN (101.22), INV. OUT (100.67)
HEIGHT OF COVER 20'

- 6-4 24" x 15" PIPE RECD. ENTRANCE RT.
HEIGHT OF COVER 7'
- 6-5 24" x 15" PIPE RECD. ENTRANCE LT.
HEIGHT OF COVER 7'
- 6-6 4" x 15" CONC. PIPE RECD. FOR EXT.
HEIGHT OF COVER 7'



DESIGN FEATURES RELATING TO CONSTRUCTION OR TO REGULATION AND CONTROL OF TRAFFIC MAY BE SUBJECT TO CHANGE AS DEEMED NECESSARY BY THE DEPARTMENT

REVISED	FINA REGION	STATE	FEDERAL AID PROJECT	ROUTE	STATE PROJECT	SHEET NO.
04/21/97 07/17/97		VA.		603	0603-099-141, C-503	6

SURVEYED BY: E. N. HOLLOWELL
 SUPERVISED BY: B. T. SCOTT, JR.
 CAD OPERATOR: P. B. MARSHALL
 REVISED BY:

- ① Denotes Proposed 20' Virginia Power Aerial Easement.
- ② Denotes Proposed 15' x 25' Virginia Power Aerial Easement.
- ③ Denotes Proposed 10' Bell-Atlantic Underground Easement.
- ④ Denotes Proposed Temporary Construction Easement.

- C Denotes Construction Limits 'th Cuts
- F Denotes Construction Limits In Fills
- Figures in parenthesis and dot-dot-dashed lines denote temporary easements.
- - - Figures in brackets and dot-dashed lines denote permanent easements.

Existing Right of Way acquired previously under Proj. 0603-099-141, M-502 & 0603-099-173, M-501

DENOTES ROCK CHECK DAM TY II
 DENOTES OLD ROAD TO BE OBSCURED

