

SUFFOLK DISTRICT DESIGN UNIT

DESIGN FEATURES RELATING TO CONSTRUCTION OR TO REGULATION AND CONTROL OF TRAFFIC MAY BE SUBJECT TO CHANGE AS DEEMED NECESSARY BY THE DEPARTMENT

REVISED 7/08/97	FHWA REGION	STATE	FEDERAL AID PROJECT	ROUTE	STATE PROJECT	SHEET NO.
	3	VA.		0603	0603-099-171, C-501	4

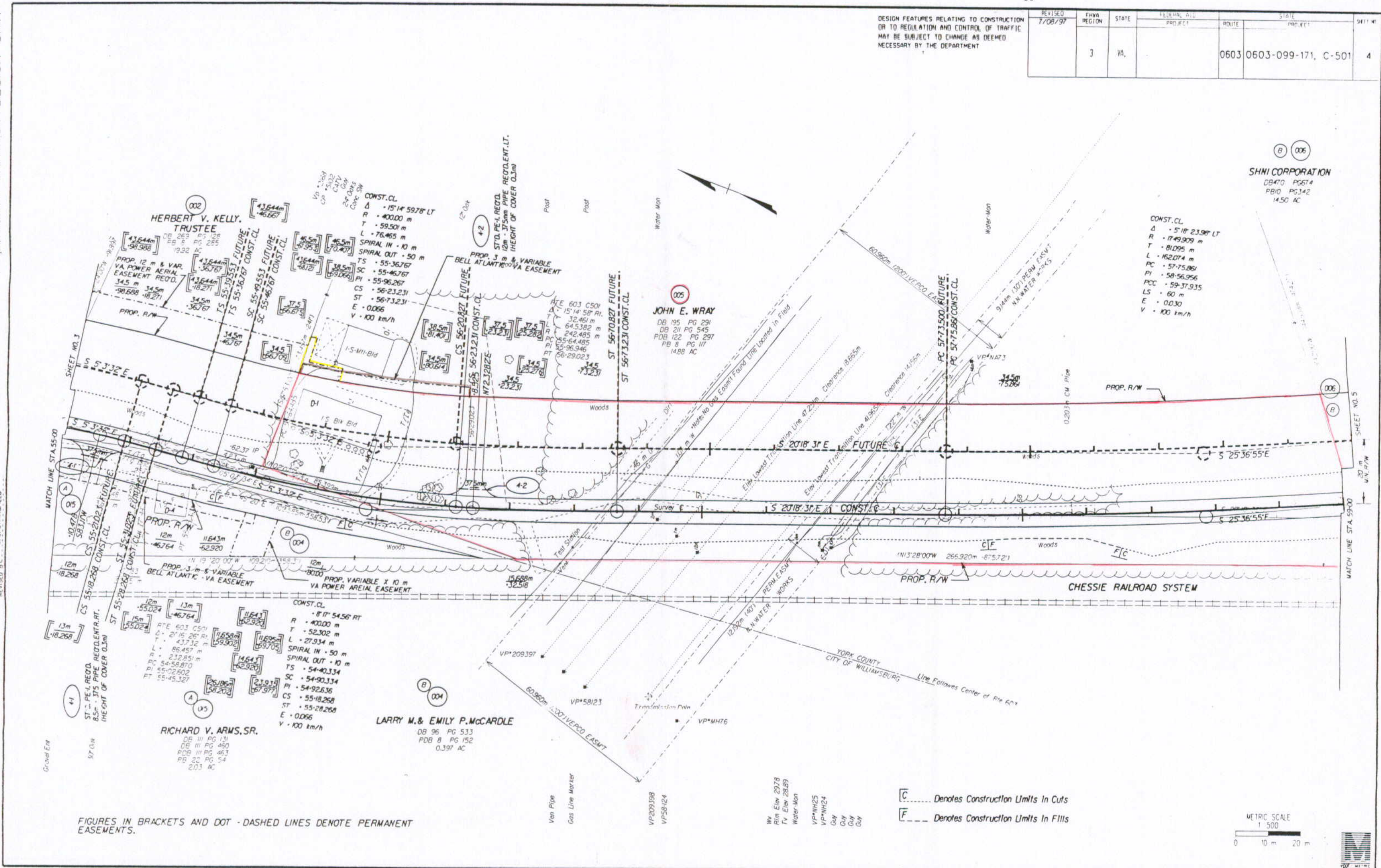
(B) (006)  
**SHNI CORPORATION**  
 DB 470 PG 674  
 PB 10 PG 342  
 14.50 AC

CONST. CL  
 $\Delta$  - 5'18" 23.98' LT  
 R - 1749.909 m  
 T - 81095 m  
 L - 162.074 m  
 PC - 57-75.896  
 PI - 58-56.956  
 PCC - 59-37.935  
 LS - 60 m  
 E - 0.030  
 V - 100 km/h

(005)  
**JOHN E. WRAY**  
 DB 195 PG 291  
 DB 211 PG 545  
 PDB 122 PG 297  
 PB 8 PG 117  
 14.88 AC

(B) (004)  
**LARRY M. & EMILY P. McCARDLE**  
 DB 96 PG 533  
 PDB 8 PG 152  
 0.397 AC

(A) (005)  
**RICHARD V. ARMS, SR.**  
 DB III PG 131  
 DB III PG 450  
 PDB III PG 463  
 PB 22 PG 54  
 2.03 AC



FIGURES IN BRACKETS AND DOT - DASHED LINES DENOTE PERMANENT EASEMENTS.

[C]..... Denotes Construction Limits In Cuts  
 [F]..... Denotes Construction Limits In Fills



DESIGNED BY: R. O. HARMON  
 SUPERVISED BY: E. M. HOLLOMAN  
 CHECKED BY: J. J. SCOTT, JR.  
 CAD OPERATOR: J. J. SCOTT, JR.  
 REVISIONS BY: E. L. STRONG, ELD

07/09/97 09:43:18