

SUFFOLK DISTRICT DESIGN UNIT

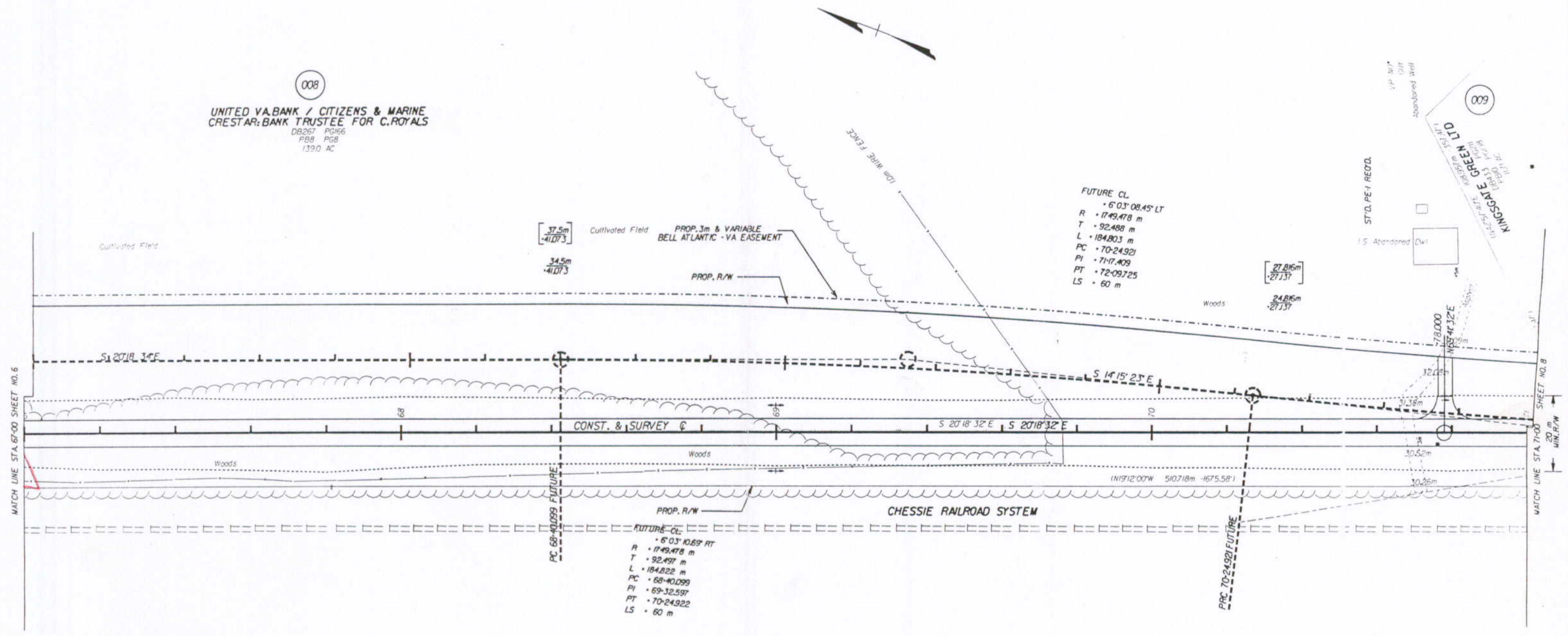
DESIGN FEATURES RELATING TO CONSTRUCTION OR TO REGULATION AND CONTROL OF TRAFFIC MAY BE SUBJECT TO CHANGE AS DEEMED NECESSARY BY THE DEPARTMENT

REVISED	FHWA REGION	STATE	FEDERAL AID PROJECT	ROUTE	STATE PROJECT	SHEET NO.
	3	VA		0603	0603-099-171, C-501	7

008  
 UNITED VA. BANK / CITIZENS & MARINE  
 CRESTAR BANK TRUSTEE FOR C. ROYALS  
 DB267 PG66  
 PB8 PG8  
 139.0 AC

FUTURE CL.  
 • 6'03'08.45" LT  
 R • 1749.478 m  
 T • 92.488 m  
 L • 184.803 m  
 PC • 70-24921  
 PI • 71-17.409  
 PT • 72-09725  
 LS • 60 m

FUTURE CL.  
 • 5'03'10.69" RT  
 R • 1749.478 m  
 T • 92.497 m  
 L • 184.822 m  
 PC • 68-40099  
 PI • 69-32.597  
 PT • 70-24922  
 LS • 60 m



FIGURES IN BRACKETS AND DOT - DASHED LINES DENOTE PERMANENT EASEMENTS.



SUPERVISOR: E. M. HOLLOWELL  
 DESIGNED BY: R. T. SCOTT, JR.  
 CAD OPERATOR: J. J. JONES  
 REVISIONS:

02/26/97 08:56:28