

SUFFOLK DISTRICT DESIGN UNIT

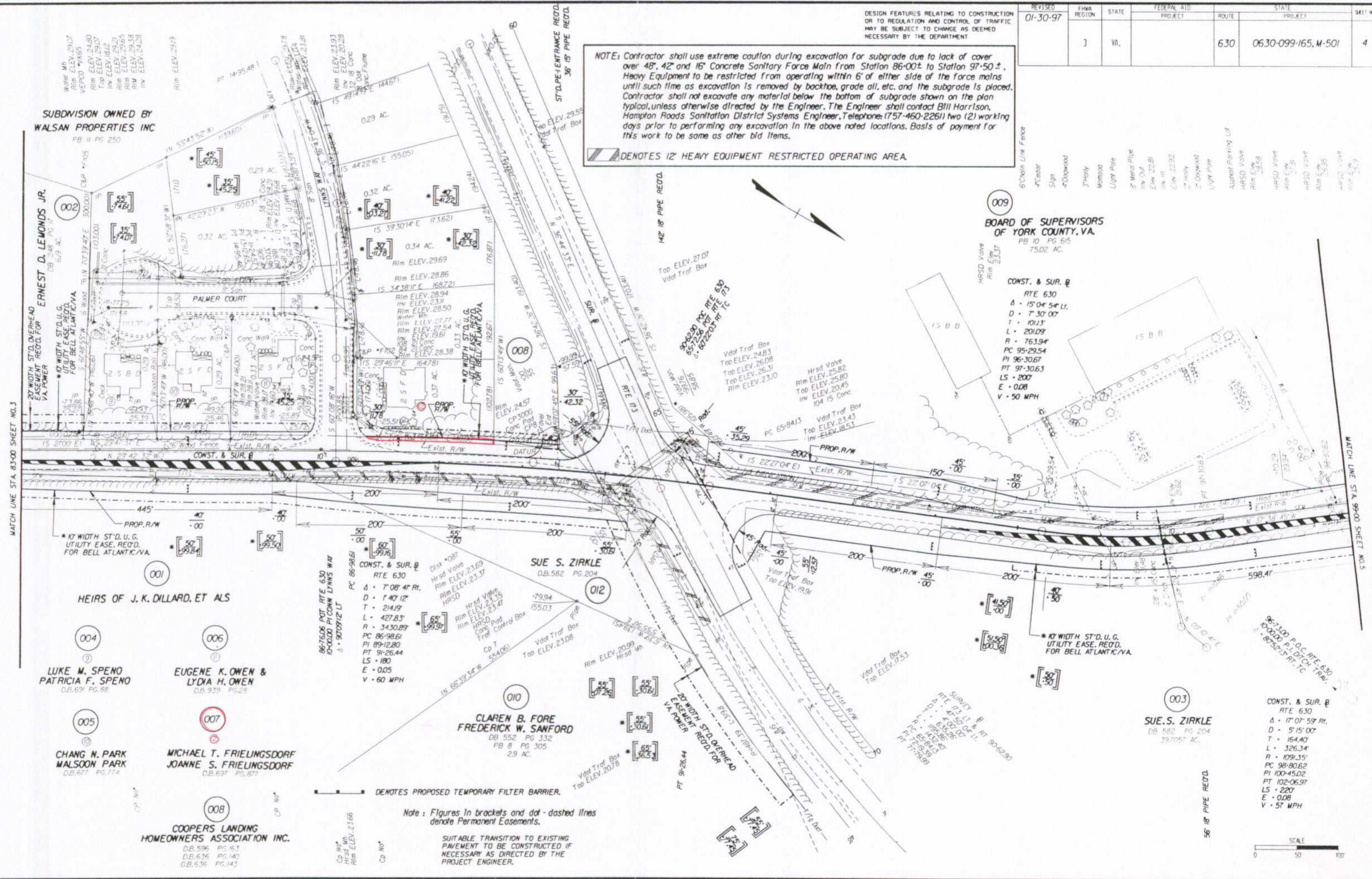
SUPERVISED BY: E. N. HOLLOWELL
 DESIGNED BY: D. B. WINSLOW
 CAD OPERATOR: J. L. JONES
 REVISED BY: []

DESIGN FEATURES RELATING TO CONSTRUCTION OR TO REGULATION AND CONTROL OF TRAFFIC MAY BE SUBJECT TO CHANGE AS DEEMED NECESSARY BY THE DEPARTMENT

REVISED	FHWA REGION	STATE	FEDERAL AID PROJECT	ROUTE	STATE PROJECT	SHEET NO.
01-30-97	3	VA.		630	0630-099-165, M-501	4

NOTE: Contractor shall use extreme caution during excavation for subgrade due to lack of cover over 48", 42" and 16" Concrete Sanitary Force Main from Station 86+00± to Station 97+50±. Heavy Equipment to be restricted from operating within 6' of either side of the force mains until such time as excavation is removed by backhoe, grade all, etc. and the subgrade is placed. Contractor shall not excavate any material below the bottom of subgrade shown on the plan typical, unless otherwise directed by the Engineer. The Engineer shall contact Bill Harrison, Hampton Roads Sanitation District Systems Engineer, Telephone: (757-460-2261) two (2) working days prior to performing any excavation in the above noted locations. Basis of payment for this work to be same as other bid items.

■ DENOTES 12' HEAVY EQUIPMENT RESTRICTED OPERATING AREA.



009
 BOARD OF SUPERVISORS
 OF YORK COUNTY, VA.
 PB 10 PG 615
 75.02 AC.

CONST. & SUR. B
 RTE 630
 Δ - 15'04" 5" LI.
 D - 7'30" 00"
 T - 101.3'
 L - 201.09'
 R - 763.94'
 PC 95+29.54
 PI 96+30.67
 PT 97+30.63
 LS - 200'
 E - 0.08
 V - 50 MPH

003
SUE S. ZIRKLE
 DB 582 PG 204
 39.7057 AC.

CONST. & SUR. B
 RTE 630
 Δ - 17'07" 59" RI.
 D - 5'15" 00"
 T - 164.40'
 L - 326.34'
 R - 1091.35'
 PC 98+80.62
 PI 100+45.02
 PT 102+06.97
 LS - 220'
 E - 0.08
 V - 57 MPH

