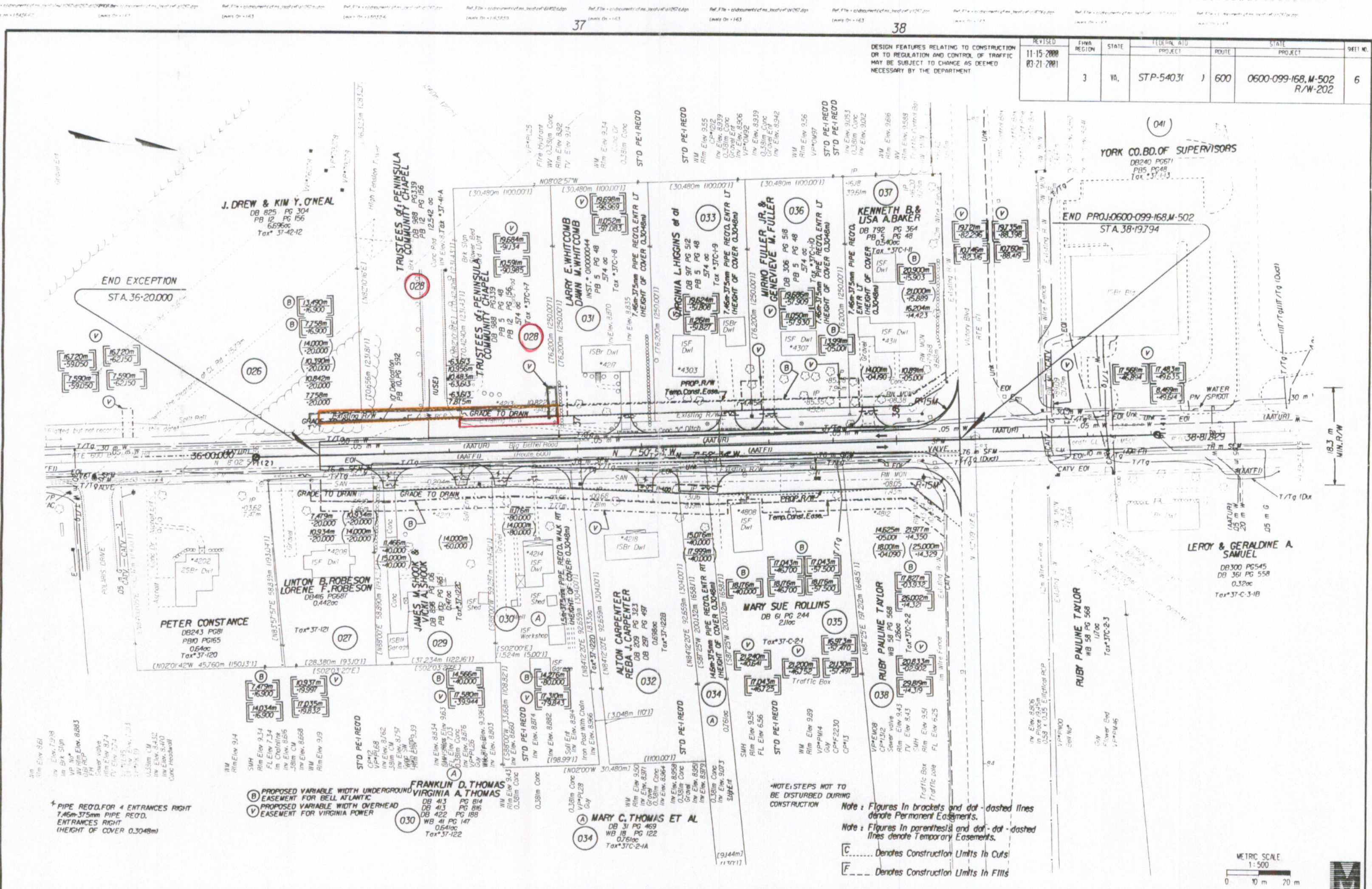


SUFFOLK DISTRICT DESIGN UNIT

SUPERVISED BY: A. G. BAUTTS, P.E. (781) 925-1595
 DESIGNED BY: D. B. BEYTON, (781) 925-3620
 CAD OPERATOR: D. B. BEYTON
 REVISED BY: 05/02/2001

5/23/01 09:43



DESIGN FEATURES RELATING TO CONSTRUCTION OR TO REGULATION AND CONTROL OF TRAFFIC MAY BE SUBJECT TO CHANGE AS DEEMED NECESSARY BY THE DEPARTMENT

REVISED	FHWA REGION	STATE	FEDERAL AID PROJECT	ROUTE	STATE PROJECT	SHEET NO.
11-15-2000 03-21-2001	3	VA	STP-54031	600	0600-099-168.M-502 R/W-202	6

YORK CO. BD. OF SUPERVISORS
 DB240 PG571
 PB5 PG48
 Tax *37-113

END PROJ. 0600-099-168.M-502
 STA. 38+19.794

LEROY & GERALDINE A. SAMUEL
 DB300 PG545
 DB 361 PG 558
 0.32ac
 Tax *37-C-118

RUBY PAULINE TAYLOR
 WB 58 PG 568
 1/10ac
 Tax *37C-2-3

*NOTE: STEPS NOT TO BE DISTURBED DURING CONSTRUCTION

Note: Figures in brackets and dot-dashed lines denote Permanent Easements.
 Note: Figures in parenthesis and dot-dashed lines denote Temporary Easements.
 [C] Denotes Construction Limits In Cuts
 [F] Denotes Construction Limits In Fills

