

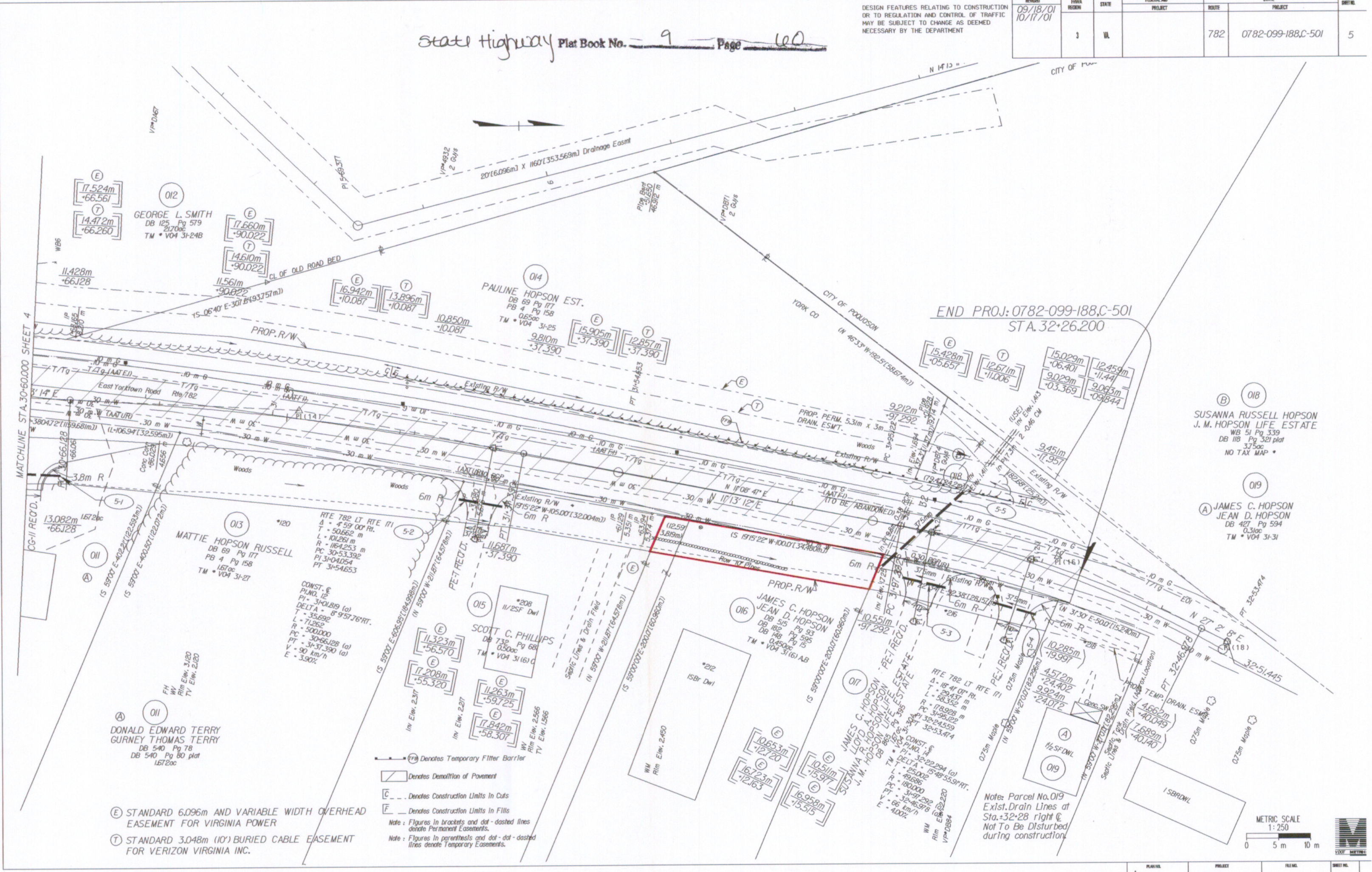
Design File - c:\documents of ms\_joon\7935\793506.dgn Ref. File - c:\documents of ms\_joon\7935\793506.dgn Levels On - 173-63  
Ref. File - c:\documents of ms\_joon\7935\793506.dgn Levels On - 15052-63  
Ref. File - c:\documents of ms\_joon\7935\793506.dgn Levels On - 143340-606263  
Ref. File - s17935.dgn Levels On - 143  
Ref. File - s17935.dgn Levels On - 143  
Ref. File - c:\documents of ms\_joon\7935\793506.dgn Levels On - 15064-63  
Ref. File - c:\documents of ms\_joon\7935\793506.dgn Levels On - 143  
Ref. File - c:\documents of ms\_joon\7935\793506.dgn Levels On - 143  
Ref. File - c:\documents of ms\_joon\7935\793506.dgn Levels On - 143  
Ref. File - c:\documents of ms\_joon\7935\793506.dgn Levels On - 143

DESIGN FEATURES RELATING TO CONSTRUCTION OR TO REGULATION AND CONTROL OF TRAFFIC MAY BE SUBJECT TO CHANGE AS DEEMED NECESSARY BY THE DEPARTMENT

REVISION	DATE	BY	CHKD	STATE	FEDERAL AID	ROUTE	PROJECT	SHEET NO.
09/18/01	10/17/01			VA		782	0782-099-188,C-501	5

State Highway Plat Book No. 9 Page 60

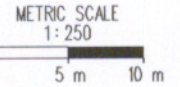
HAMPTON ROADS DISTRICT DESIGN UNIT



- (E) STANDARD 6.096m AND VARIABLE WIDTH OVERHEAD EASEMENT FOR VIRGINIA POWER
- (T) STANDARD 3.048m (10') BURIED CABLE EASEMENT FOR VERIZON VIRGINIA INC.

○ Denotes Temporary Filter Barrier  
 ▭ Denotes Demolition of Pavement  
 C --- Denotes Construction Limits In Cuts  
 F --- Denotes Construction Limits In Fills  
 Note: Figures in brackets and dot-dashed lines denote Permanent Easements.  
 Note: Figures in parentheses and dot-dashed lines denote Temporary Easements.

Note: Parcel No. 019 Exist. Drain Lines at Sta. 32+28 right @ Not To Be Disturbed during construction



SURVEYED BY: B. J. HARMON, 757-653-5572  
 SUPERVISED BY: K. M. BASSON, 757-652-2882  
 DESIGNED BY: K. BATTEN, 757-652-2556  
 CAD OPERATOR: B. J. HARMON, 757-652-2556  
 REVISED BY:

5/7/02 09:50:43

PLAN NO.	PROJECT	FILE NO.	SHEET NO.
A	0782-099-188		5