

Design File: C:\documents of ms_jacob\4627\414627005.dgn Ref. File: C:\documents of ms_jacob\4627\414627005.dgn Levels On: 150,52,63

Ref. File: C:\documents of ms_jacob\4627\414627005.dgn Levels On: 150,52,63

Ref. File: C:\documents of ms_jacob\4627\414627005.dgn Levels On: 150,52,63

Ref. File: C:\documents of ms_jacob\4627\414627005.dgn Levels On: 150,52,63

Ref. File: C:\documents of ms_jacob\4627\414627005.dgn Levels On: 150,52,63

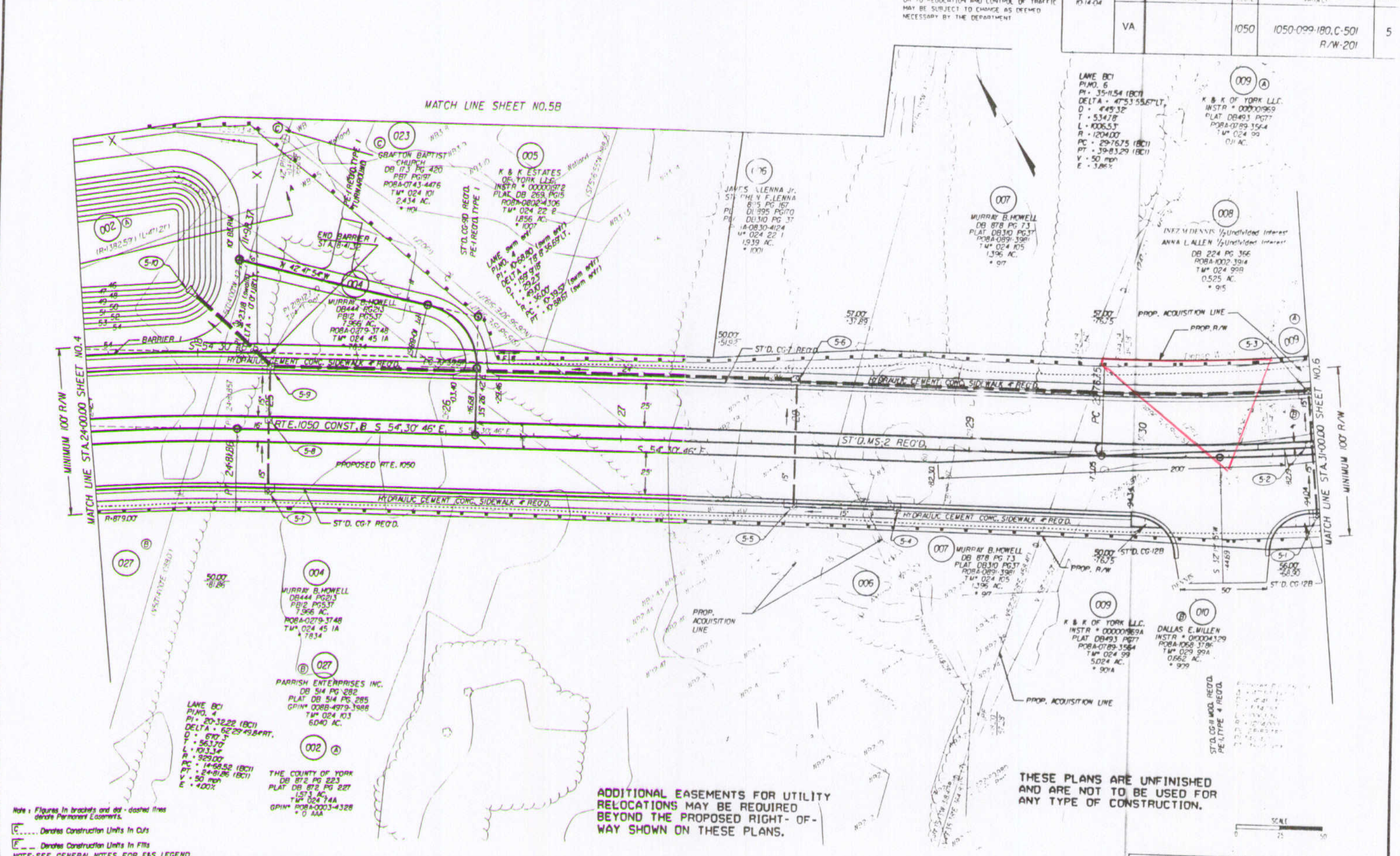
Ref. File: C:\documents of ms_jacob\4627\414627005.dgn Levels On: 150,52,63

Ref. File: C:\documents of ms_jacob\4627\414627005.dgn Levels On: 150,52,63

DESIGNED BY: J. DANE, GEDUGE, (757) 925-3622
 HAMPTON ROADS DISTRICT DESIGN UNIT

DESIGN FEATURES RELATING TO CONSTRUCTION OR TO REGULATION AND CONTROL OF TRAFFIC MAY BE SUBJECT TO CHANGE AS DEEMED NECESSARY BY THE DEPARTMENT

REVISION	DATE	FEDERAL AID	STATE PROJECT	ROUTE	PROJECT	SHEET NO.
	10/14/04		VA	1050	1050-099-180.C-501 R/W-201	5



ADDITIONAL EASEMENTS FOR UTILITY RELOCATIONS MAY BE REQUIRED BEYOND THE PROPOSED RIGHT-OF-WAY SHOWN ON THESE PLANS.

THESE PLANS ARE UNFINISHED AND ARE NOT TO BE USED FOR ANY TYPE OF CONSTRUCTION.



Note: Figures in brackets and dot-dashed lines denote Permanent Easements.
 [---] Denotes Construction Units In Cuts
 [---] Denotes Construction Units In Fills
 NOTE: SEE GENERAL NOTES FOR E&S LEGEND

PLAN NO.	PROJECT	FILE NO.	SHEET NO.
	1050-099-180		5

10/14/2004 12:05:53