

Plat Book No. 1 Page 51

J. B. SINCLAIR, JR.
CIVIL ENGINEER
HAMPTON, VIRGINIA

February 6, 1933

Honorable Frank Armistead,
Judge of the Circuit Court,
Yorktown, Va.

Dear Sir:

I have this day surveyed the lines and placed markers on the ground, in the suit of *Arnd vs Bunting*, as shown in red on the map filed in the papers of that suit. The line shown in red, is not parallel to the south line as claimed by *Arnd*, but the jury evidently thought it was when they used the bearing of that line in their verdict. To use that bearing, N 77° 10' E, would make the line go through a house owned by *Mr Arnd*, when I had testified that it would not go through the body of the house. Believing that the jury intended to be guided by the part at the front, and post stubble on the line, I have surveyed it accordingly, showing bearings and distances with the lines as shown in red.

Filed February 6-1933
Flap & Hallway clerk J.B. Sinclair Jr

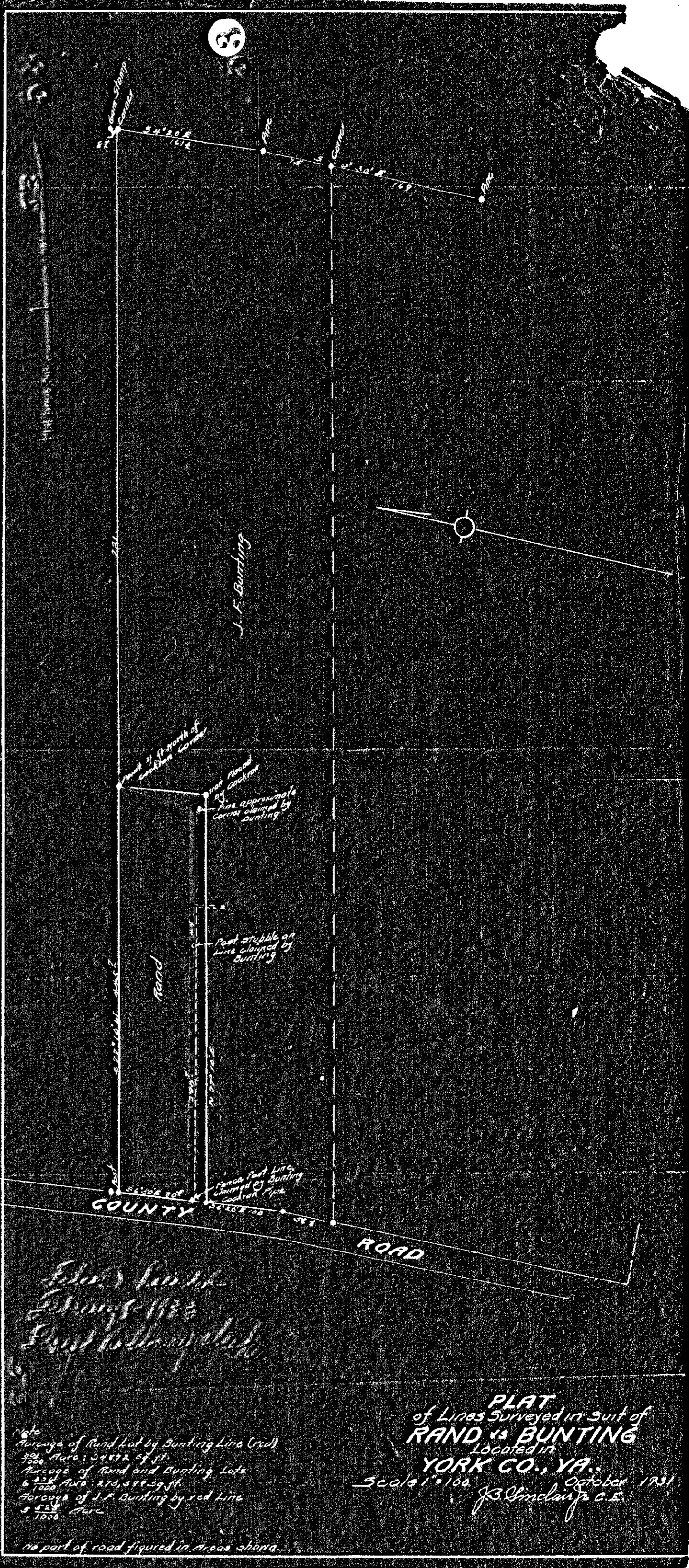


Filed March 8, 1933
Flap & Hallway clerk

Note
Average of Rand Lot by Bunting Line (red)
588 Area: 54972 sq ft
7000 Area: 54972 sq ft
Average of Rand and Bunting Lots
6 1/200 Area: 274 888 29 ft
Average of J.F. Bunting by red line
5 825 Area

PLAT
of Lines Surveyed in suit of
RAND vs BUNTING
Located in
YORK CO., VA.
Scale 1" = 100' October 1931
J.B. Sinclair Jr C.E.

no part of road figured in areas shown.



Filed March 8, 1933
Flap & Hallway clerk

Note
Average of Rand Lot by Bunting Line (red)
588 Area: 54972 sq ft
7000 Area: 54972 sq ft
Average of Rand and Bunting Lots
6 1/200 Area: 274 888 29 ft
Average of J.F. Bunting by red line
5 825 Area

PLAT
of Lines Surveyed in suit of
RAND vs BUNTING
Located in
YORK CO., VA.
Scale 1" = 100' October 1931
J.B. Sinclair Jr C.E.

no part of road figured in areas shown.