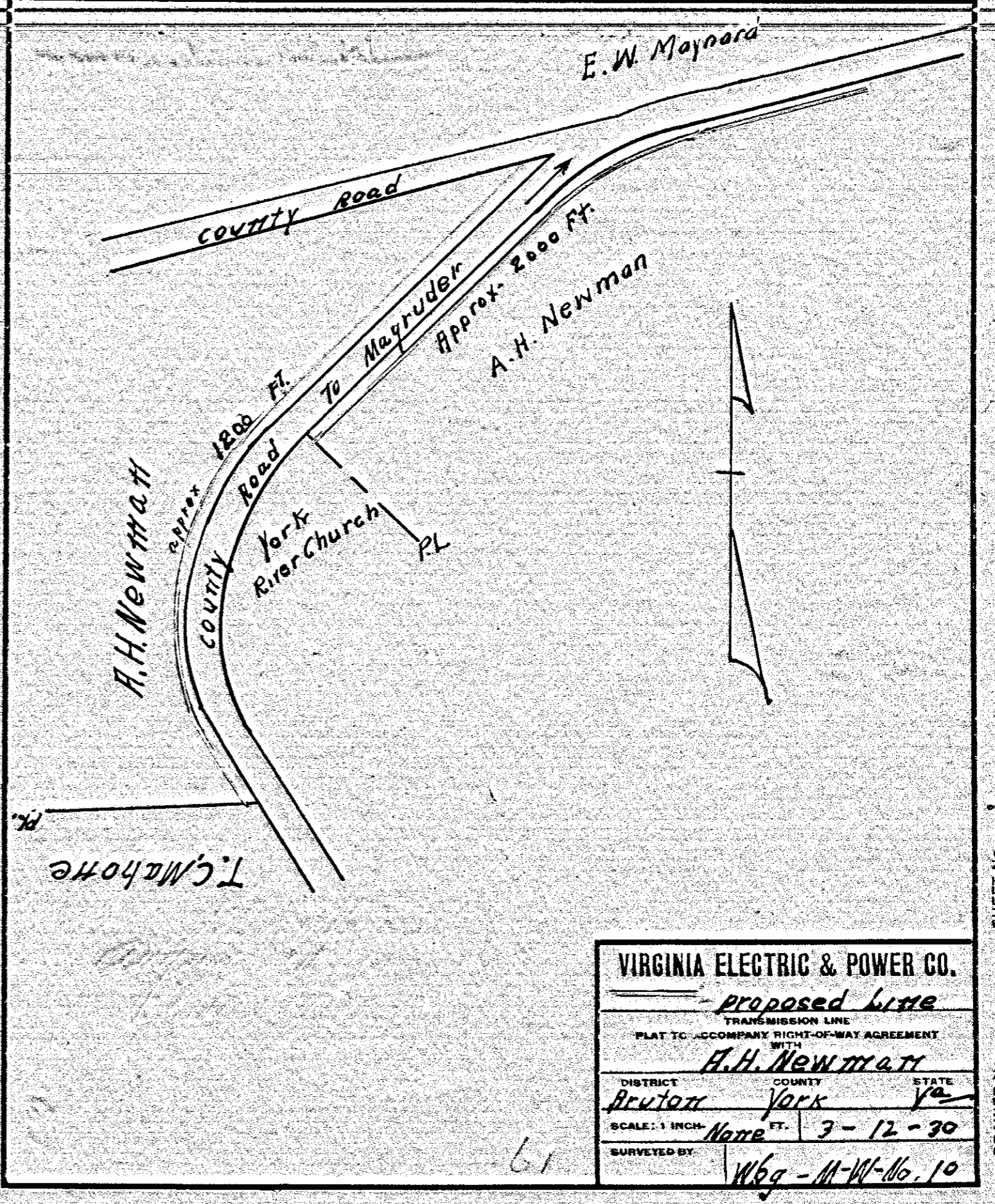


VIRGINIA ELECTRIC & POWER CO.		
Proposed line		
TRANSMISSION LINE		
PLAT TO ACCOMPANY RIGHT-OF-WAY AGREEMENT WITH		
Wesley Bartlett		
DISTRICT	COUNTY	STATE
Bruton	York	VA
SCALE: 1 INCH	None	FT. 3-11-30
SURVEYED BY: Wbg-M-W-No. 3		

SHEET NO. 60  
DRAWER NO.

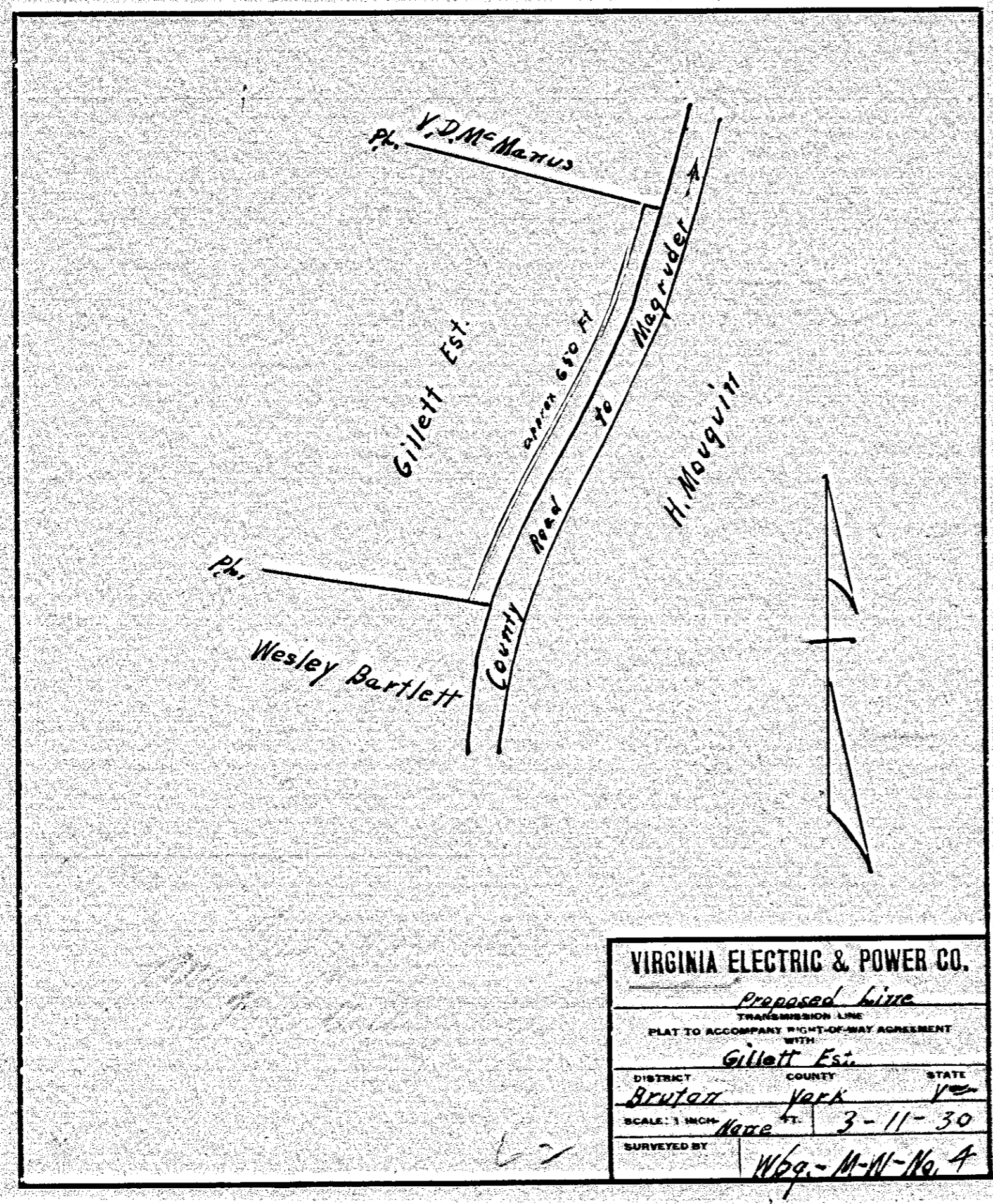


VIRGINIA ELECTRIC & POWER CO.		
Proposed line		
TRANSMISSION LINE		
PLAT TO ACCOMPANY RIGHT-OF-WAY AGREEMENT WITH		
A.H. Newmath		
DISTRICT	COUNTY	STATE
Bruton	York	VA
SCALE: 1 INCH	None	FT. 3-12-30
SURVEYED BY: Wbg-M-W-No. 10		

SHEET NO. 61  
DRAWER NO.

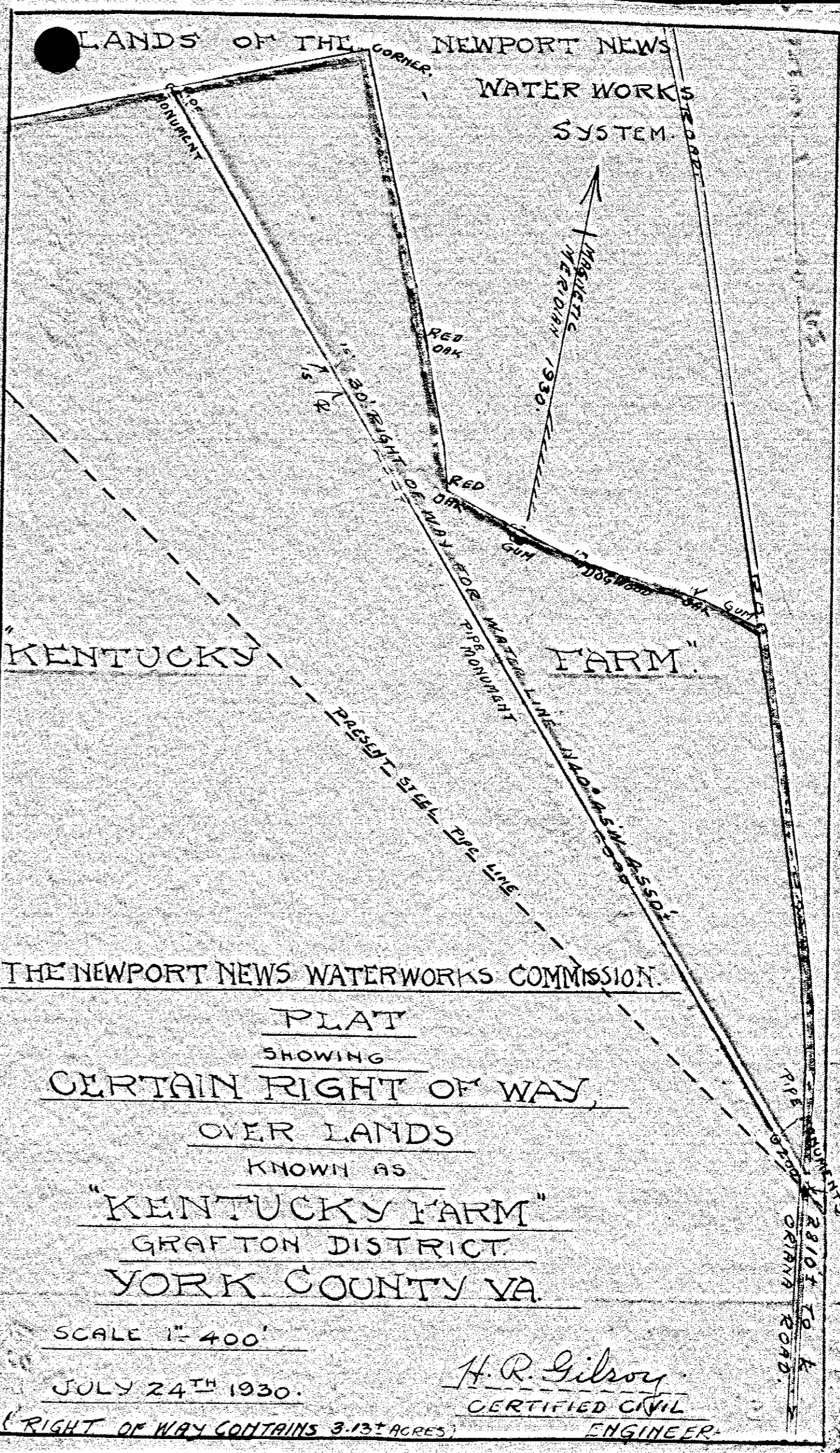
60

62



VIRGINIA ELECTRIC & POWER CO.		
Proposed line		
TRANSMISSION LINE		
PLAT TO ACCOMPANY RIGHT-OF-WAY AGREEMENT WITH		
Gillett Est.		
DISTRICT	COUNTY	STATE
Bruton	York	VA
SCALE: 1 INCH	None	FT. 3-11-30
SURVEYED BY: Wbg-M-W-No. 4		

SHEET NO. 62  
DRAWER NO.



THE NEWPORT NEWS WATERWORKS COMMISSION.

PLAT  
SHOWING  
CERTAIN RIGHT OF WAY  
OVER LANDS  
KNOWN AS  
"KENTUCKY FARM"  
GRAFTON DISTRICT  
YORK COUNTY VA.

SCALE 1"=400'

JULY 24<sup>TH</sup> 1930.

H. R. Gilroy  
CERTIFIED CIVIL  
ENGINEER.

(RIGHT OF WAY CONTAINS 3.13 ACRES)

SHEET NO. 62  
DRAWER NO.