

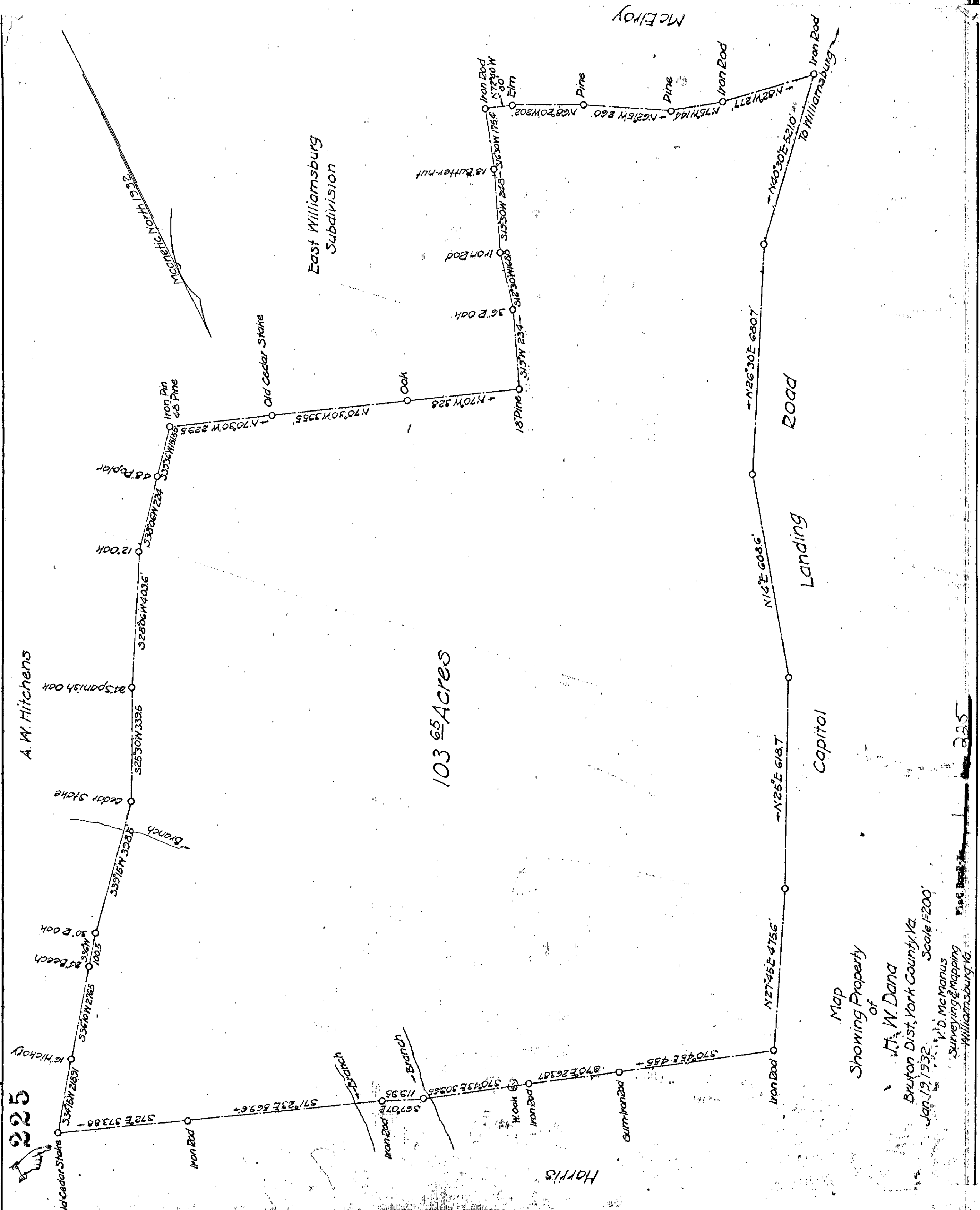
VIRGINIA ELECTRIC & POWER CO.
PROPOSED LINE
 TRANSMISSION LINE
 PLAT TO ACCOMPANY RIGHT-OF-WAY AGREEMENT
 WITH
M.W. WYNN
 DISTRICT BRUTON COUNTY YORK VA
 SCALE: 1 INCH = 6-20-31 FT.
 SURVEYED BY W.B.G. [Signature]

Page 224

DRAWER NO. SHEET NO.

224

225



103.65 Acres

Map Showing Property of

W. W. Dana
 Bruton Dist, York County, Va.

Jan. 19, 1932
 Scale 1/200'

V. D. McManus
 Surveying & Mapping
 Williamsburg, Va.

225