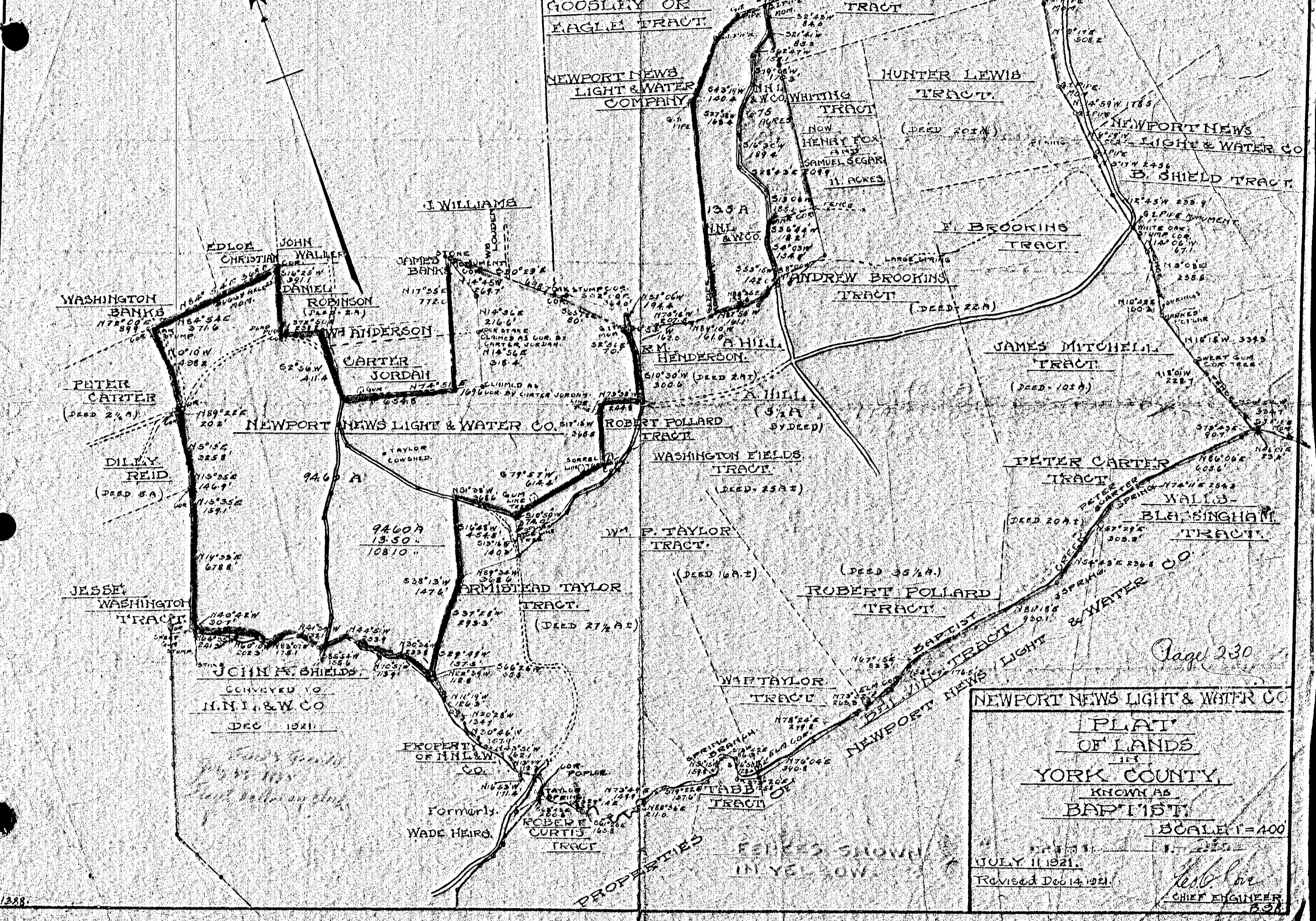


SOURCES OF DATA USED.

NOTE BOOKS: #5 42, 44, 51, 69, 70, 71, 116.				
DRAWINGS: L. 77, L. 52, A. 121.				
DOCUMENTS: DEED FROM OLD LAND CO. TO N.H.L. & W. CO.				
COMPILED	DRAWN	TRACED	COMPUTED	CHECKED.
H.R.G.	H.R.G.	H.R.G.	H.R.G.	J.M.C.



NEWPORT NEWS LIGHT & WATER CO.
 PLAT
 OF LANDS
 IN
 YORK COUNTY,
 KNOWN AS
 BAPTIST.
 SCALE 1" = 400'
 JULY 11, 1921.
 Revised Dec 14, 1921.
 J. S. Lane
 CHIEF ENGINEER

11388