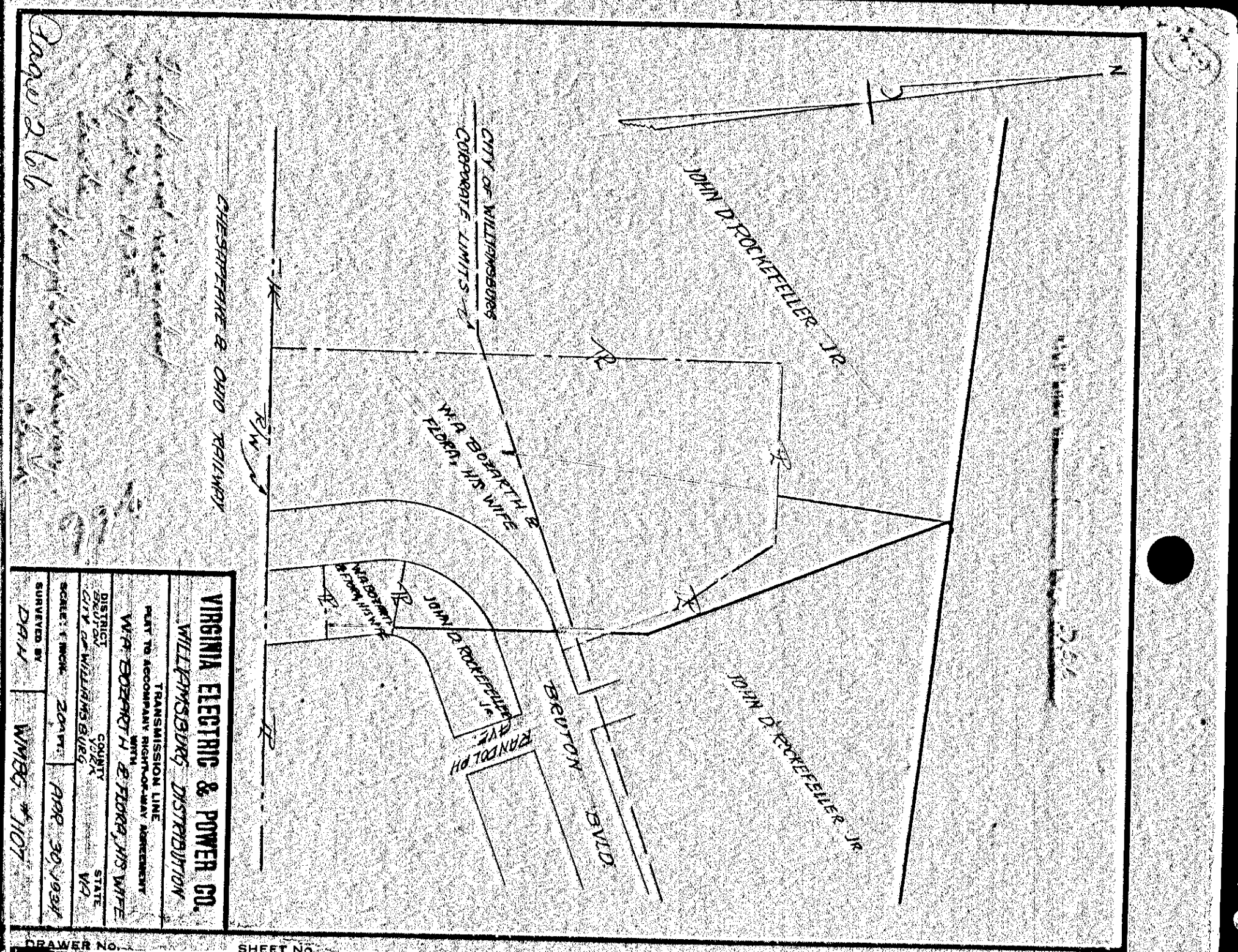


VIRGINIA ELECTRIC & POWER CO.
WILLIAMSBURG DISTRIBUTION
TRANSMISSION LINE
PLAT TO ACCOMPANY RIGHT-OF-WAY AGREEMENT
WITH
W.F. BOBERTH
COUNTY YORK STATE VA
SCALE: 1"=60'
DATE: FEB 24, 1934
SURVEYED BY: R.H.M.S.
DRAWER NO. WMBG # 109

DRAWER NO. SHEET NO.

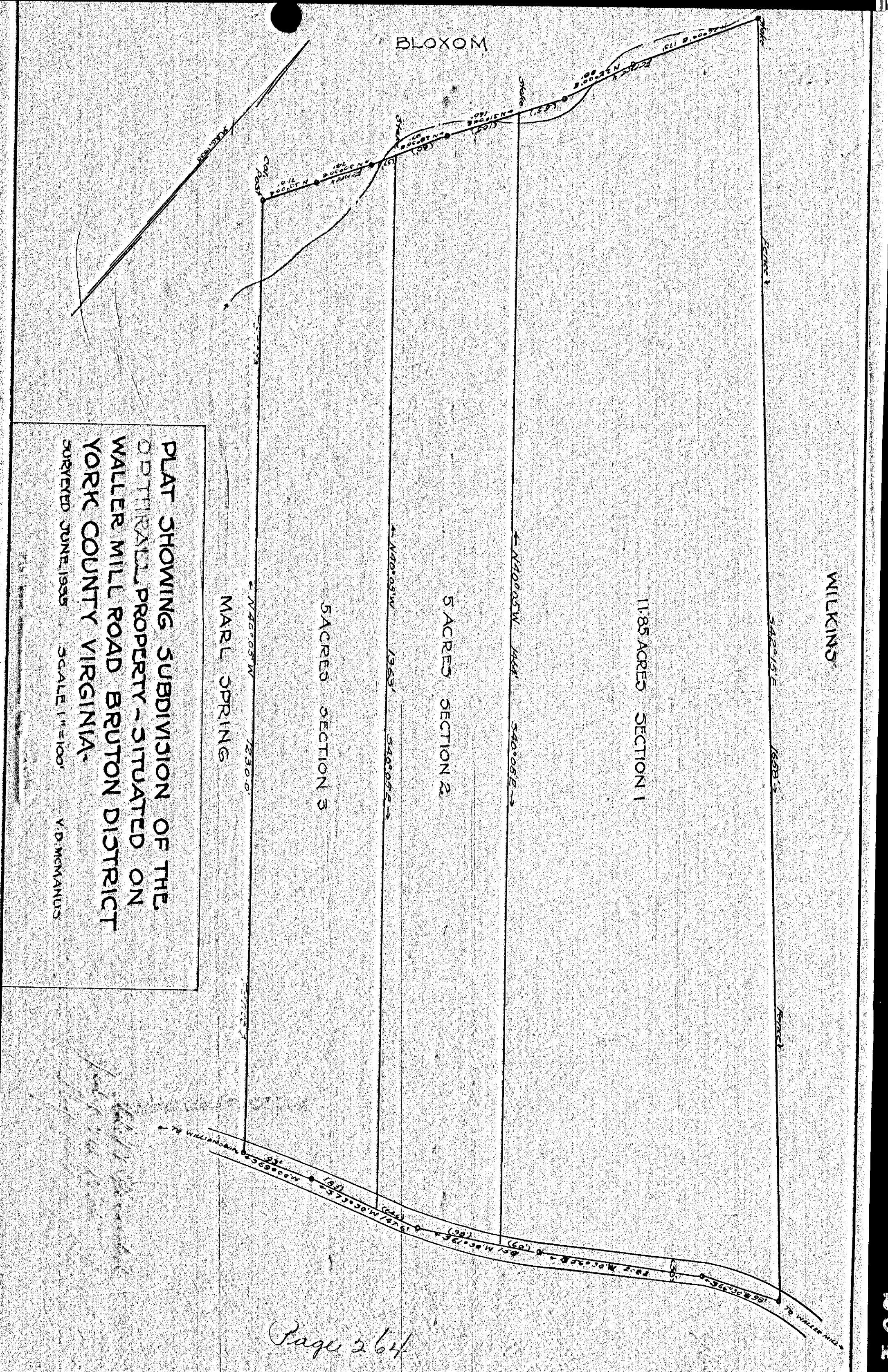


VIRGINIA ELECTRIC & POWER CO.
WILLIAMSBURG DISTRIBUTION
TRANSMISSION LINE
PLAT TO ACCOMPANY RIGHT-OF-WAY AGREEMENT
WITH
W.F. BOBERTH & THORNTON WIFE
COUNTY YORK STATE VA
SCALE: 1"=60'
DATE: MAR 30, 1934
SURVEYED BY: D.P.M.
DRAWER NO. WMBG # 107

DRAWER NO. SHEET NO.

265

264
266



PLAT SHOWING SUBDIVISION OF THE
OPTERAIL PROPERTY - SITUATED ON
WALLER MILL ROAD BRUTON DISTRICT
YORK COUNTY VIRGINIA.
SURVEYED JUNE 1935 SCALE 1"=100'
V.D. MCMAHONS

Page 264

264