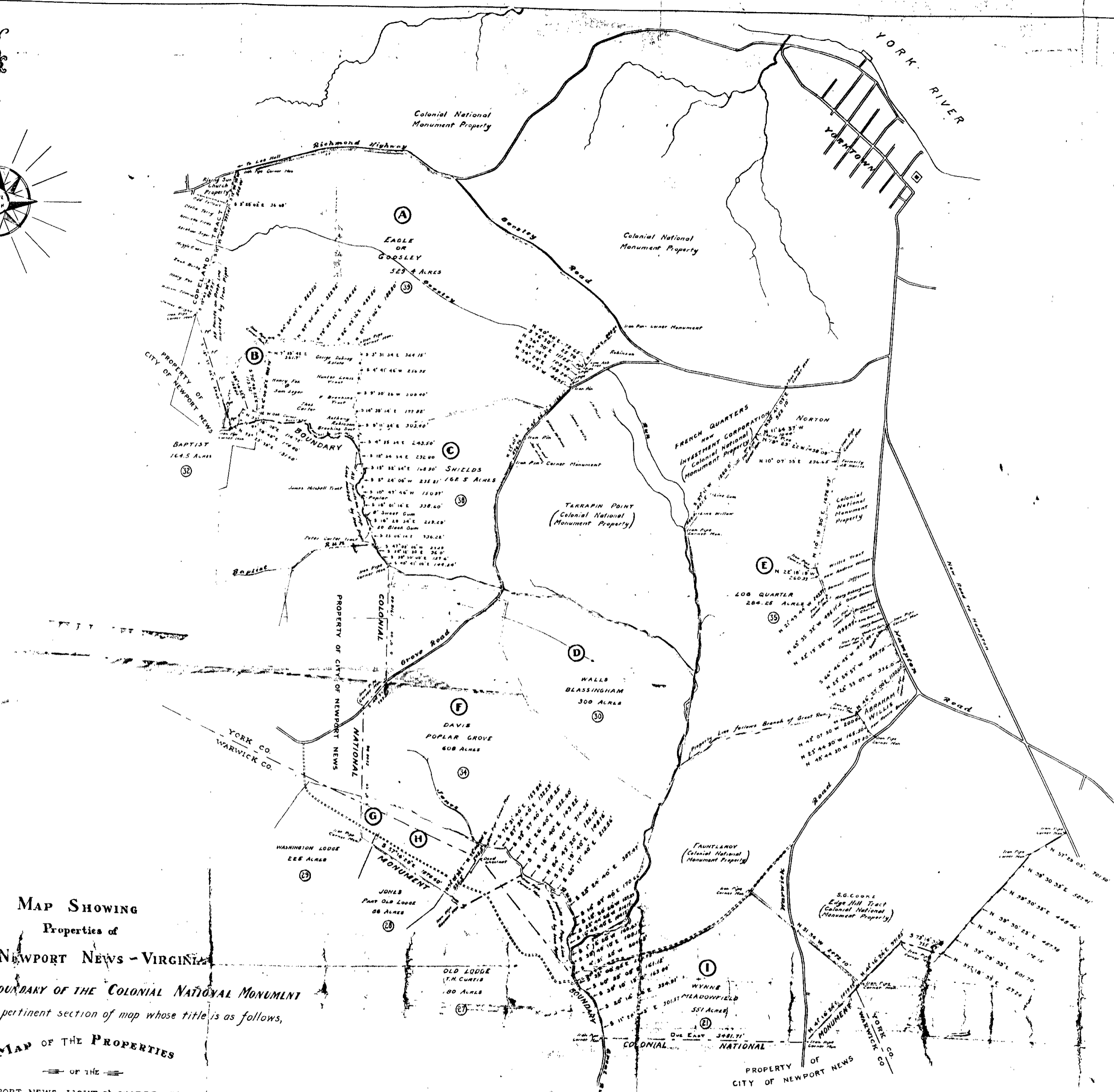


AREAS.

Parcel	Area	Acres
A	495.84	Acres
B	20.25	"
C	162.5	"
D	182.18	"
E	284.25	"
F	330.05	"
G	12.97	"
H	37.76	"
I	192.7	"
Total	1718.50	"



Note - All points on outside property lines are marked by iron pipes. Fences shown thus

274

MAP SHOWING
Properties of
CITY OF NEWPORT NEWS - VIRGINIA
 INCLUDED IN THE BOUNDARY OF THE COLONIAL NATIONAL MONUMENT
 Compiled from the pertinent section of map whose title is as follows,
MAP OF THE PROPERTIES
 of the
NEWPORT NEWS LIGHT & WATER CO.
 IN THE
COUNTIES OF WARWICK, YORK & JAMES CITY,
VIRGINIA
 December 1915 *Scale 500' = 1"*

822- and from surveys made June to November 1935.

N.M. Col. 6041	Drawn by	Traced by	Checked by	Field Work by	Revised
	A.P.H.	J.P.H.	R.W.B.	H.A.B. & R.W.B.	Dec. 5, 1935

DEPARTMENT OF THE INTERIOR
NATIONAL PARK SERVICE
COLONIAL NATIONAL MONUMENT
 MAP SHOWING PROPERTIES OF CITY OF NEWPORT NEWS, VA
 INCLUDED IN THE BOUNDARY OF THE COLONIAL NAT. MON. -
 EASTERN DIVISION - BRANCH OF ENGINEERS
 JAN. 18, 1935. *Scale 1" = 500'*
 Revised - Dec. 5, 1935