

VIRGINIA ELECTRIC & POWER CO.
 Williamsburg Distribution
 PLAT TO ACCOMPANY RIGHT-OF-WAY AGREEMENT
 WITH
 AS SHOWN
 DISTRICT NELSON YORK VIRGINIA
 SCALE: 1"=40'
 C.W.L. WMBG # 1562

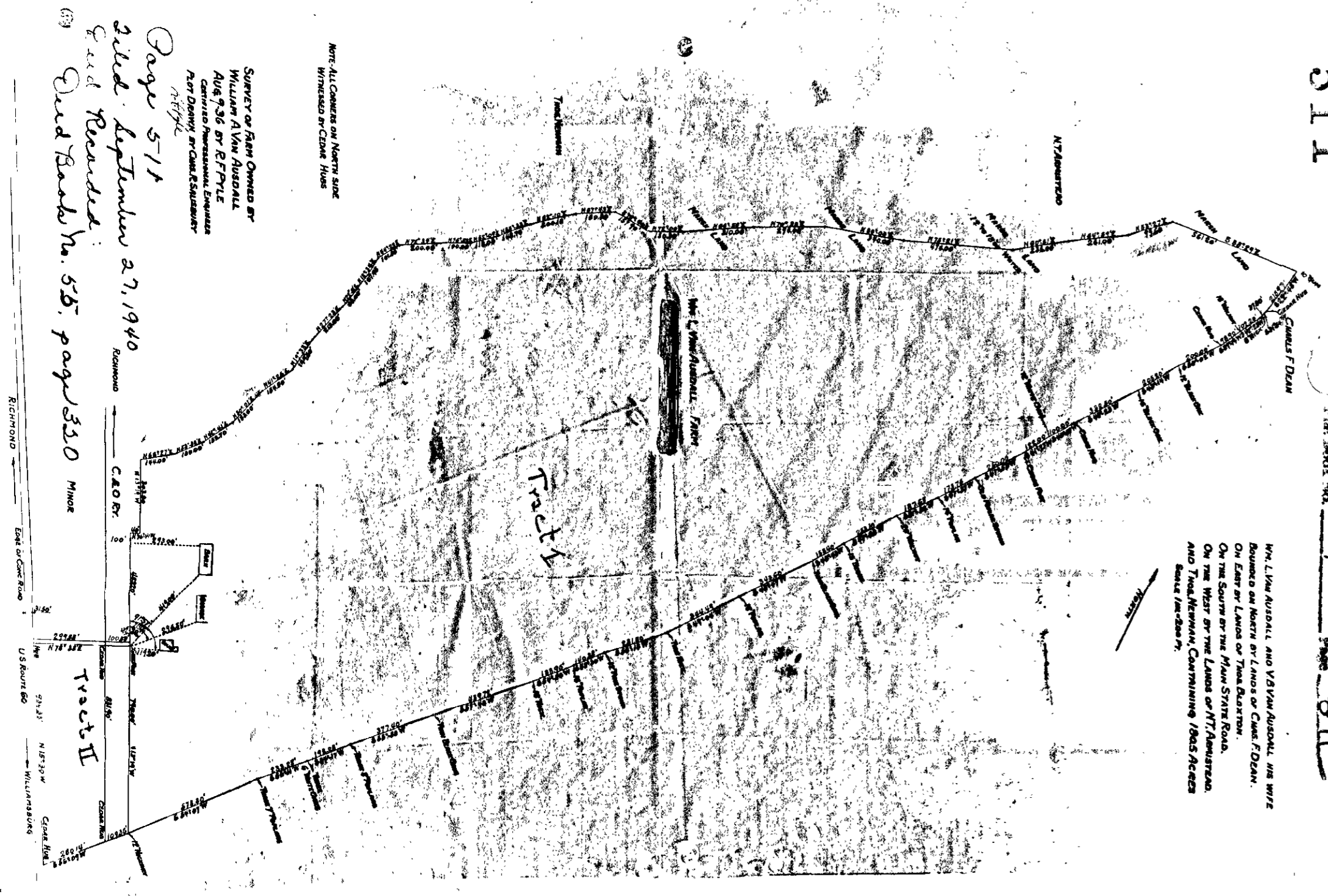
DRAWER NO. SHEET NO.

509

511

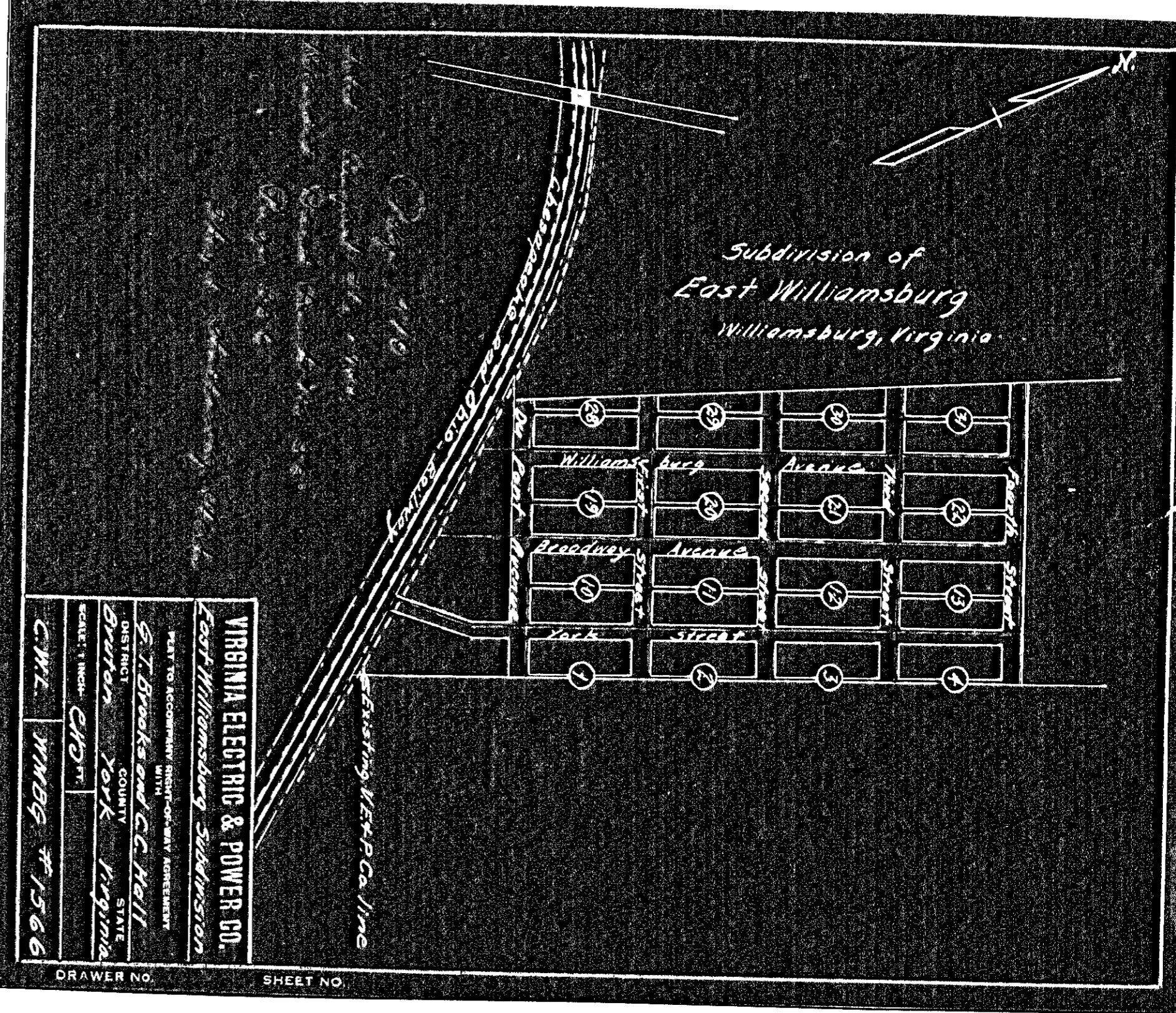
Plat Book No. 1 Page 511

Wm. L. Low Russell and V.B.W. Russell, his wife
 Deceased or Heirs of L. Ross or Carl F. Dean.
 On the East or Limits of York Station.
 On the South or the Main Street Road.
 On the West or the Limits of N.T. Robertson
 and Tom Newell, containing 1845 Acres
 More or Less.



Survey of Farm Owners or
 William Allen Russell
 Aug. 2, 36 or R.F.P.C.
 Certified Professional Engineer
 Asst. District Engineer

Page 511
 Filed September 27, 1940
 Grid Referred
 Grid Book No. 55, page 530



VIRGINIA ELECTRIC & POWER CO.
 East Williamsburg Subdivision
 PLAT TO ACCOMPANY RIGHT-OF-WAY AGREEMENT
 WITH
 S. T. Brooks and C. C. Hall
 DISTRICT BRUNER YORK VIRGINIA
 SCALE: 1"=40'
 C.W.L. WMBG # 1566

DRAWER NO. SHEET NO.

510