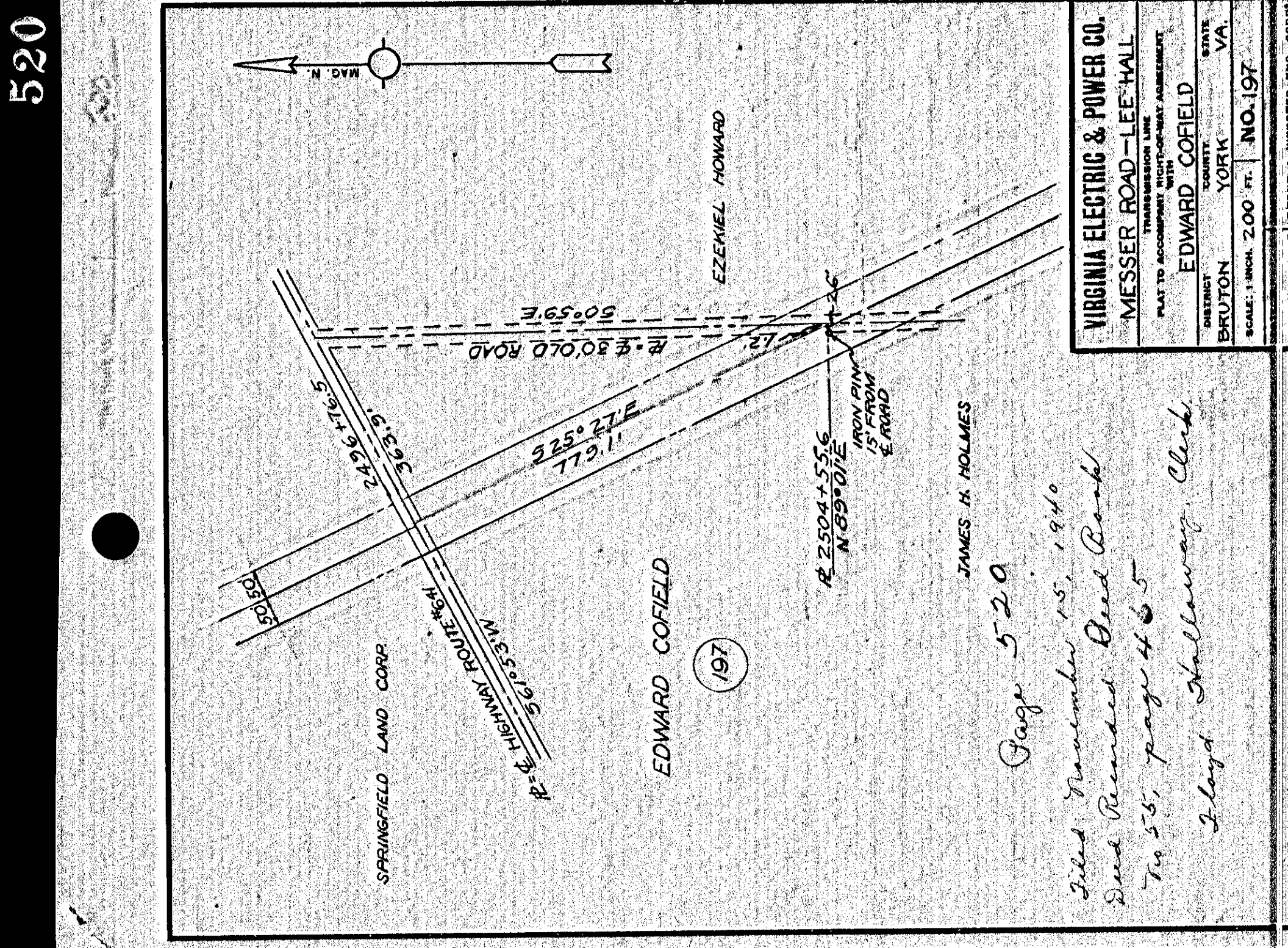


**VIRGINIA ELECTRIC & POWER CO.**  
**MESSER ROAD-LEE HALL**  
 TRANSMISSION LINE  
 PLAT TO ACCOMPANY RIGHT-OF-WAY AGREEMENT  
 DISTRICT: BRUTON COUNTY YORK VA.  
 SCALE: 1 INCH = 200 FT. NO. 204  
 DATE: OCT. 1940 SURVEYED BY STONE & WEBSTER ENG. CORP.

*Page 518*  
*Filed November 15, 1940 Deed Recorded*  
*Deed Book No 55, page 460*  
*Floyd Hallaway Clerk*

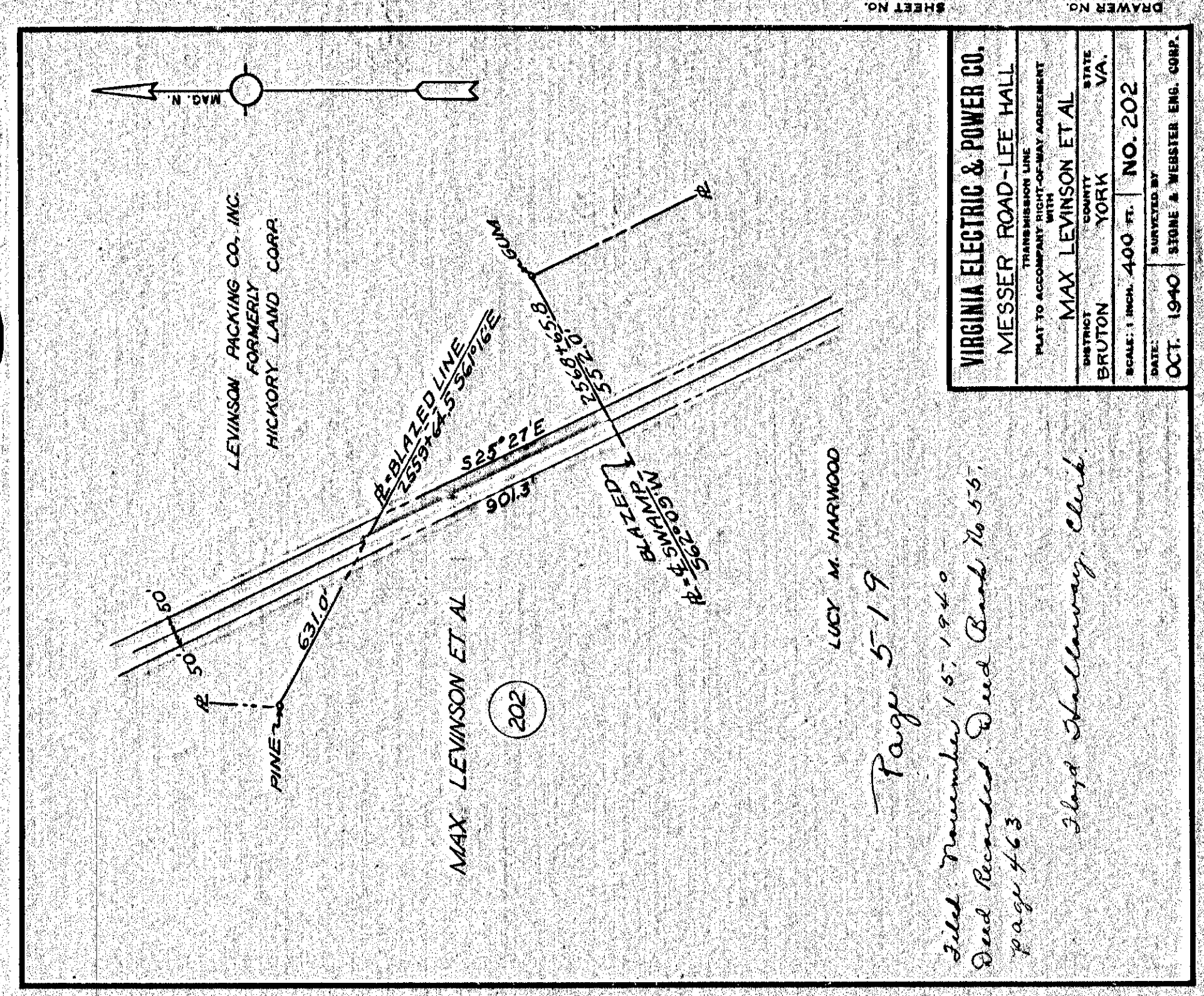
518



**VIRGINIA ELECTRIC & POWER CO.**  
**MESSER ROAD-LEE HALL**  
 TRANSMISSION LINE  
 PLAT TO ACCOMPANY RIGHT-OF-WAY AGREEMENT  
 DISTRICT: BRUTON COUNTY YORK VA.  
 SCALE: 1 INCH = 200 FT. NO. 197  
 DATE: OCT. 1940 SURVEYED BY STONE & WEBSTER ENG. CORP.

*Page 520*  
*Filed November 15, 1940*  
*Deed Recorded Deed Book*  
*No 55, page 465*  
*Floyd Hallaway Clerk*

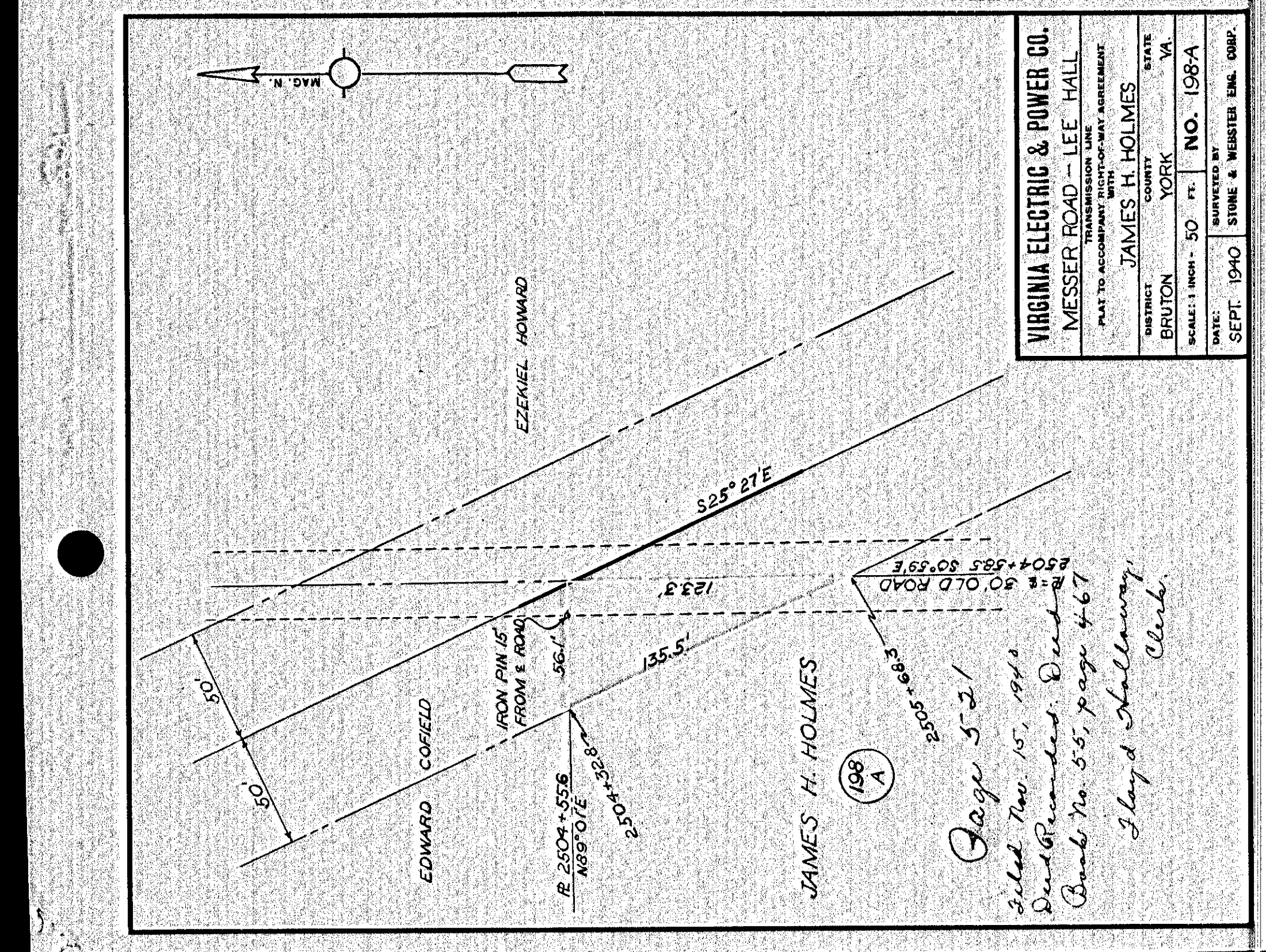
520



**VIRGINIA ELECTRIC & POWER CO.**  
**MESSER ROAD-LEE HALL**  
 TRANSMISSION LINE  
 PLAT TO ACCOMPANY RIGHT-OF-WAY AGREEMENT  
 DISTRICT: BRUTON COUNTY YORK VA.  
 SCALE: 1 INCH = 400 FT. NO. 202  
 DATE: OCT. 1940 SURVEYED BY STONE & WEBSTER ENG. CORP.

*Page 519*  
*Filed November 15, 1940*  
*Deed Recorded Deed Book No 55,*  
*page 463*  
*Floyd Hallaway Clerk*

519



**VIRGINIA ELECTRIC & POWER CO.**  
**MESSER ROAD-LEE HALL**  
 TRANSMISSION LINE  
 PLAT TO ACCOMPANY RIGHT-OF-WAY AGREEMENT  
 DISTRICT: BRUTON COUNTY YORK VA.  
 SCALE: 1 INCH = 50 FT. NO. 198A  
 DATE: SEPT. 1940 SURVEYED BY STONE & WEBSTER ENG. CORP.

*Page 521*  
*Filed Nov. 15, 1940*  
*Deed Recorded Deed*  
*Book No. 55, page 467*  
*Floyd Hallaway*  
*Clerk.*

521