

ROCHAMBAU HEIGHTS
SITUATED IN SECTION DISTRICT YORK
COUNTY VIRGINIA

DIAGONAL LINES SHOWN ARE ACCORDING TO
SURVEY MADE BY VIDMANNUS CO.
UNIVERSITY OF CHICAGO AS OF AUGUST, 1940
REVISED OCT 21, 1940 V.D.M.

VIDMANNUS CO. SCALE 1"=200'

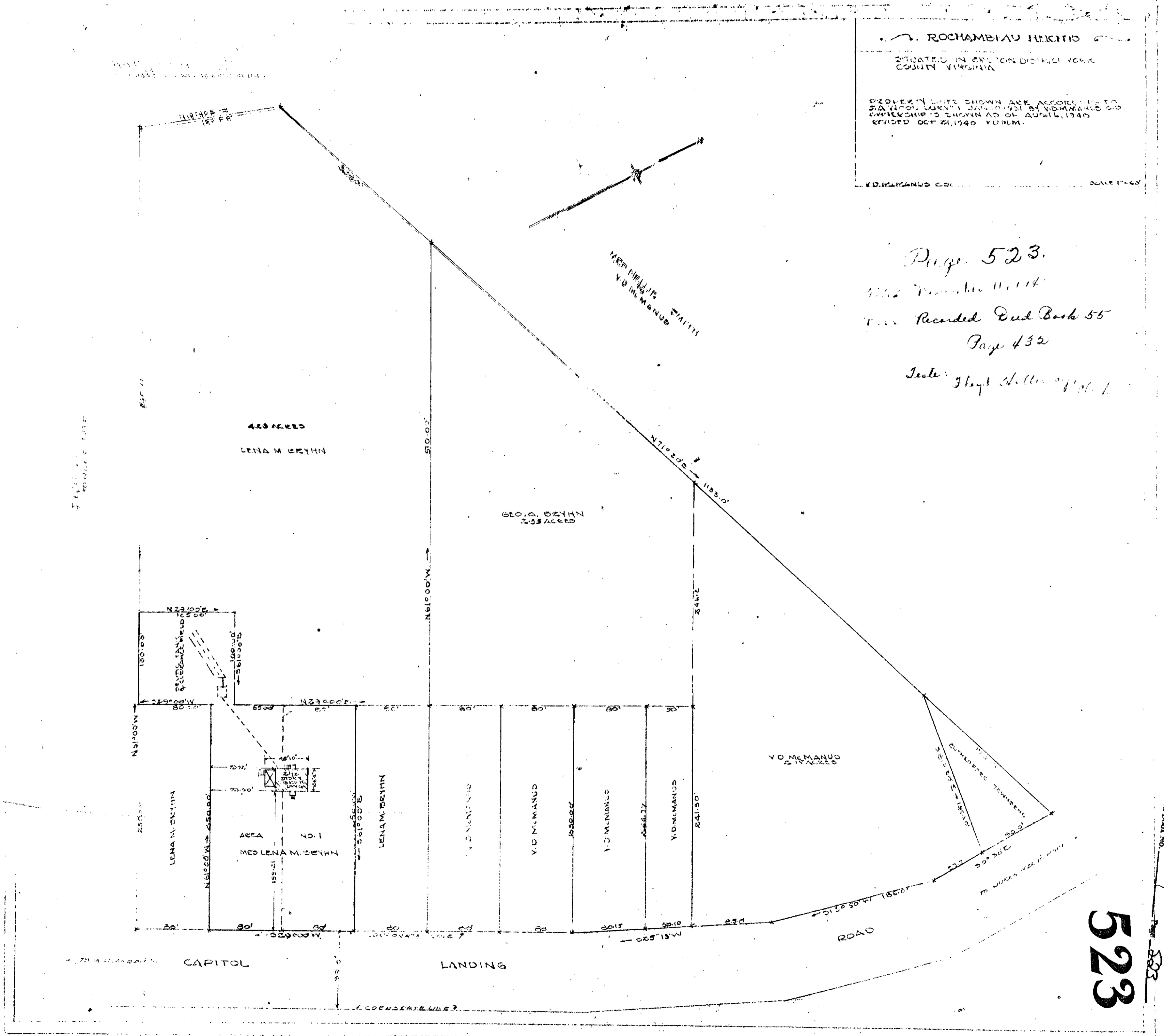
Page 523.

1942 December 11, 1944

Recorded Deed Book 55

Page 432

See: Gray's Survey of 1941



This is a true and correct copy
of the original as recorded in
Deed Book No. 1

Deed Book No. 55

523