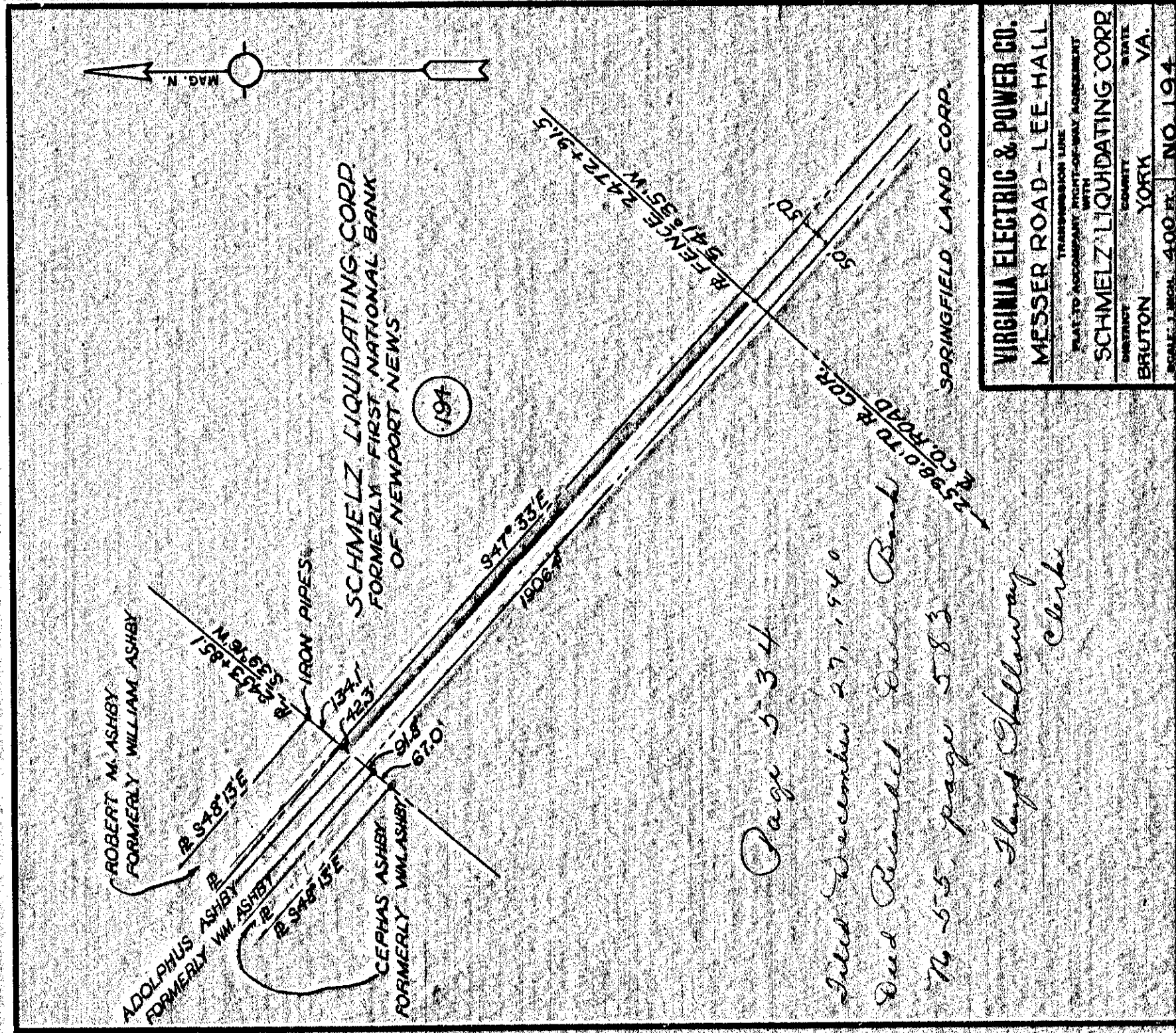


Page 532
 Filed December 27, 1940
 Dred Recorded. Dred Bank
 No. 55. page 528
 Floyd Holloway
 Clerk

VIRGINIA ELECTRIC & POWER CO.
 MESSER ROAD - LEE HALL
 PLAT TO ACCOMPANY RIGHT-OF-WAY AGREEMENT
 TRANSMISSION LINE
 WILLIAM L. VANAUSSDALL
 DISTRICT BRUTON COUNTY STATE VA
 SCALE: 1 INCH = 400 FT. NO. 177
 DATE: OCT. 1940 SURVEYED BY STONE & WEBSTER ENG. CORP.

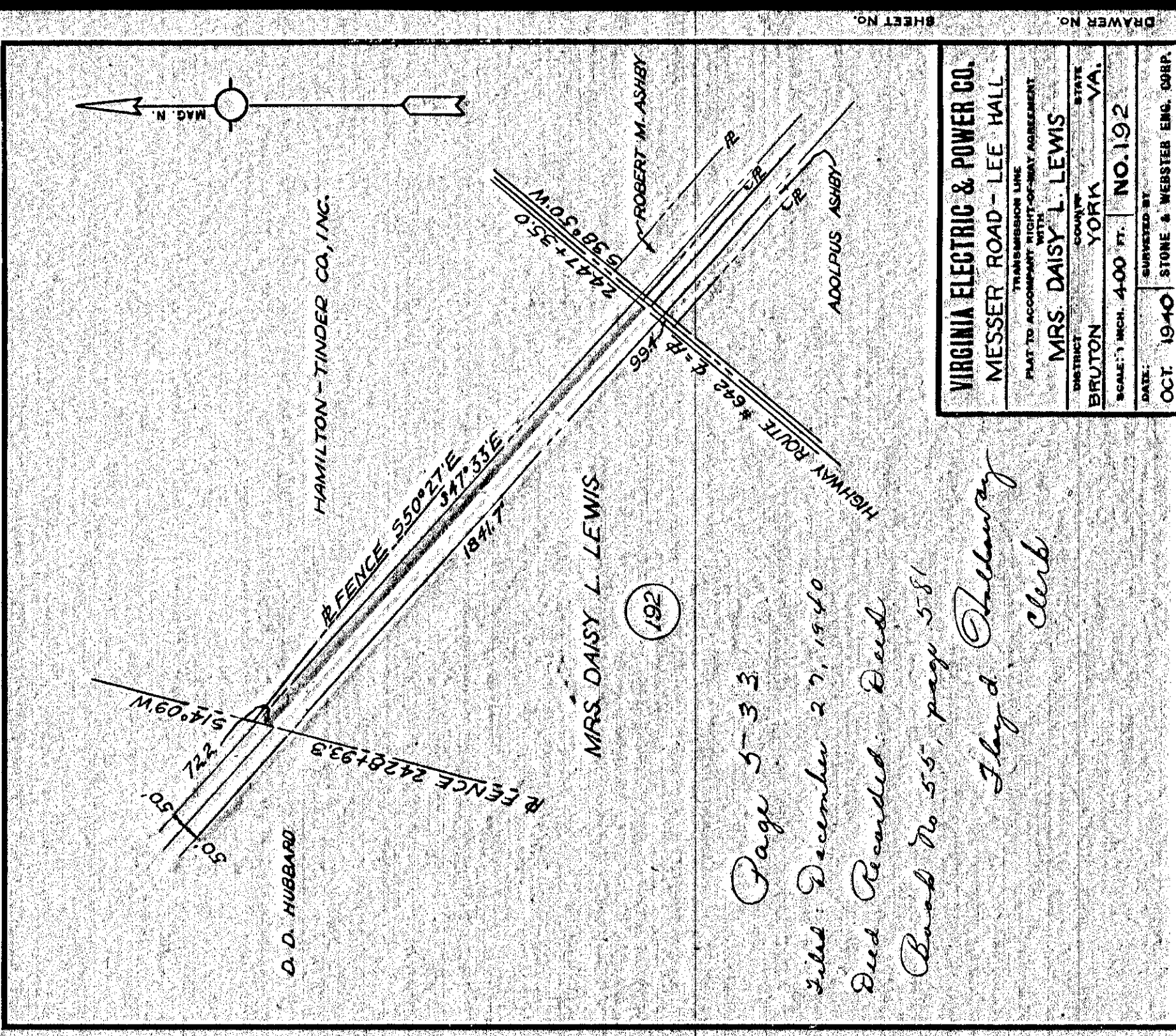
532

534



Page 534
 Filed December 27, 1940
 Dred Recorded. Dred Bank
 No. 55. page 528
 Floyd Holloway
 Clerk

VIRGINIA ELECTRIC & POWER CO.
 MESSER ROAD - LEE HALL
 PLAT TO ACCOMPANY RIGHT-OF-WAY AGREEMENT
 TRANSMISSION LINE
 SCHMELZ LIQUIDATING CORP
 DISTRICT BRUTON COUNTY STATE VA
 SCALE: 1 INCH = 400 FT. NO. 194

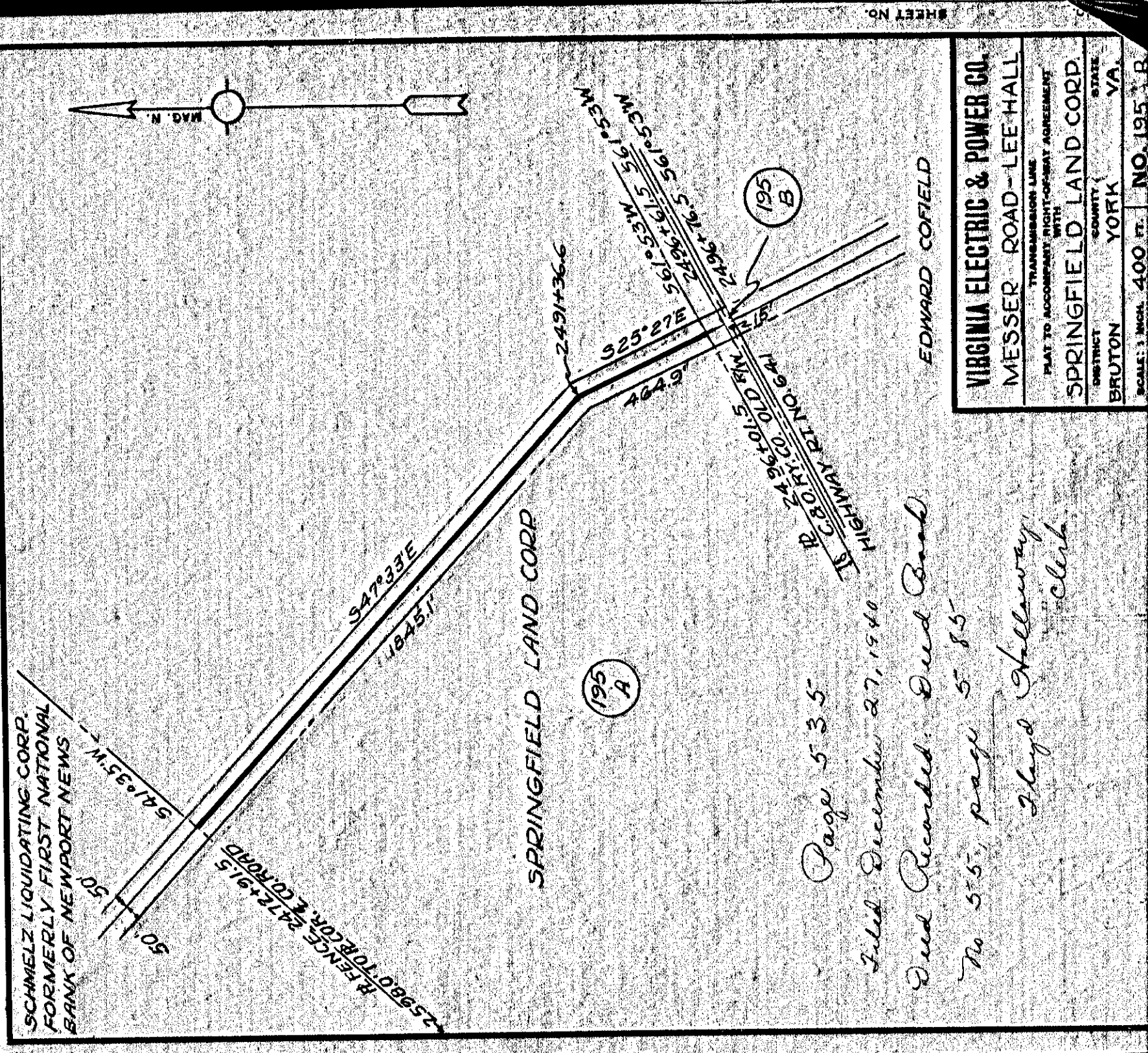


Page 533
 Filed December 27, 1940
 Dred Recorded. Dred
 Bank No. 55. page 581
 Floyd Holloway
 Clerk

VIRGINIA ELECTRIC & POWER CO.
 MESSER ROAD - LEE HALL
 PLAT TO ACCOMPANY RIGHT-OF-WAY AGREEMENT
 TRANSMISSION LINE
 MRS. DAISY L. LEWIS
 DISTRICT BRUTON COUNTY STATE VA
 SCALE: 1 INCH = 400 FT. NO. 192
 DATE: OCT. 1940 SURVEYED BY STONE & WEBSTER ENG. CORP.

533

535



Page 535
 Filed December 27, 1940
 Dred Recorded. Dred Bank
 No. 55. page 585
 Floyd Holloway
 Clerk

VIRGINIA ELECTRIC & POWER CO.
 MESSER ROAD - LEE HALL
 PLAT TO ACCOMPANY RIGHT-OF-WAY AGREEMENT
 TRANSMISSION LINE
 SPRINGFIELD LAND CORP
 DISTRICT BRUTON COUNTY STATE VA
 SCALE: 1 INCH = 400 FT. NO. 195

535