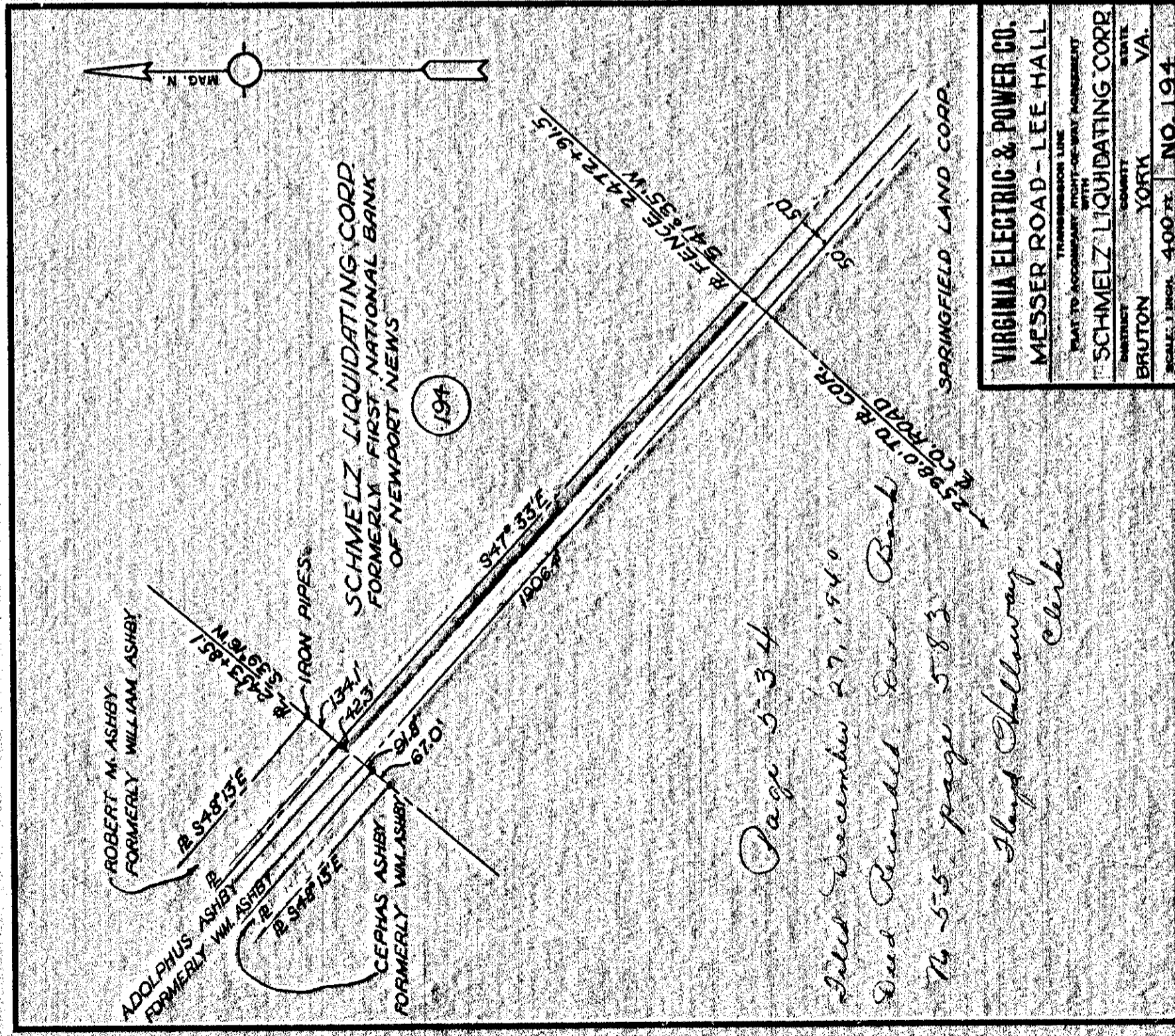


Page 532
 Filed December 27, 1940
 Deed Recorded. Deed Book
 No. 55, page 578
 Floyd Holloway
 Clerk

VIRGINIA ELECTRIC & POWER CO.	
MESSER ROAD - LEE HALL	
PLAT TO ACCOMPANY RIGHT-OF-WAY AGREEMENT	
TRANSMISSION LINE	
DISTRICT	WILLIAM L. VANAUSSDALL
COUNTY	YORK
STATE	VA
BRUTON	
SCALE: 1 INCH = 400 FT.	NO. 177
DATE: OCT. 1940	SUBMITTED BY
	STONE & WEBSTER ENG. CORP.

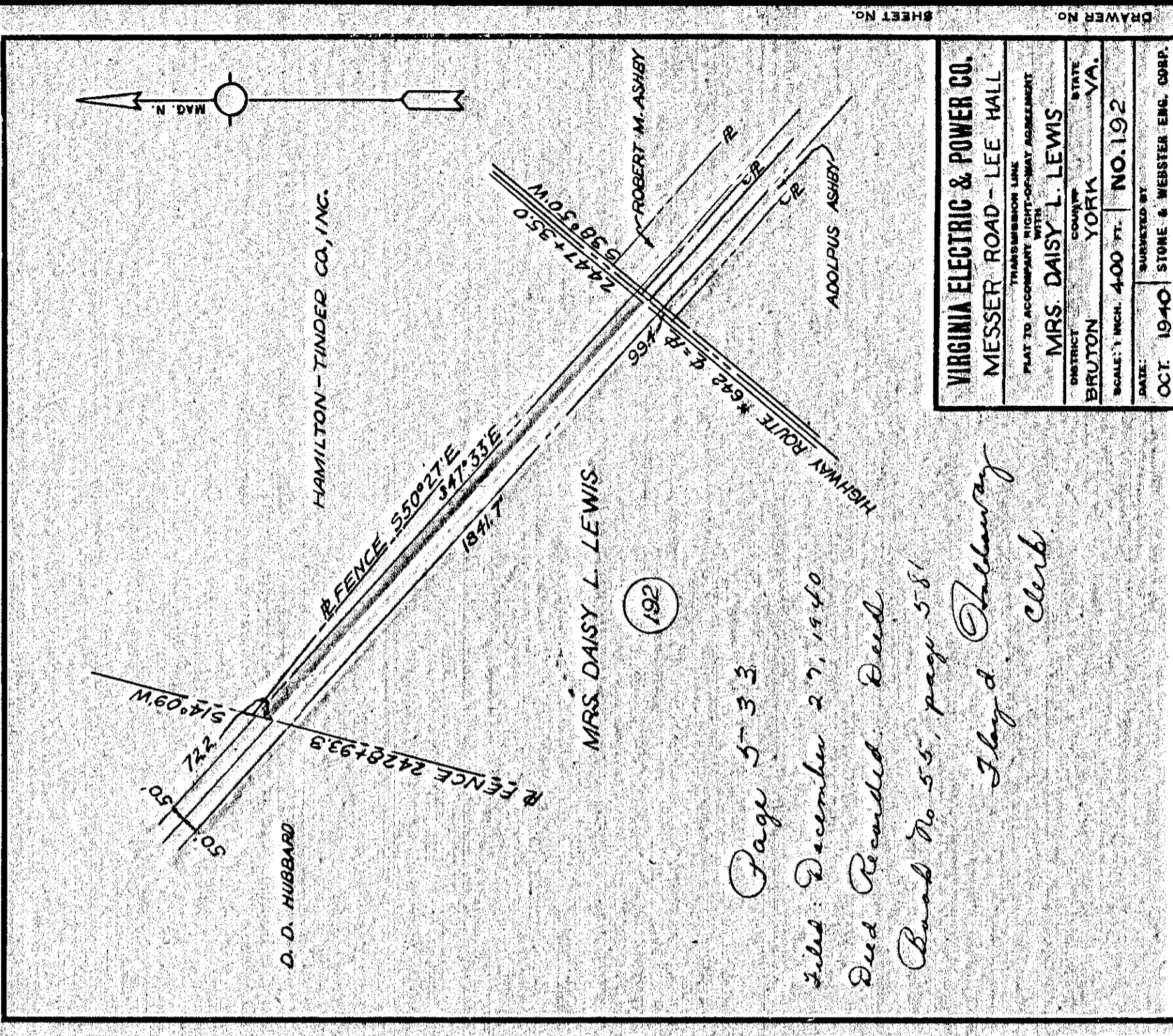
532

534



Page 534
 Filed December 27, 1940
 Deed Recorded. Deed Book
 No. 55, page 583
 Floyd Holloway
 Clerk

VIRGINIA ELECTRIC & POWER CO.	
MESSER ROAD - LEE HALL	
PLAT TO ACCOMPANY RIGHT-OF-WAY AGREEMENT	
TRANSMISSION LINE	
DISTRICT	SCHMELZ LIQUIDATING CORP
COUNTY	YORK
STATE	VA
BRUTON	
SCALE: 1 INCH = 400 FT.	NO. 194
DATE: OCT. 1940	SUBMITTED BY
	STONE & WEBSTER ENG. CORP.

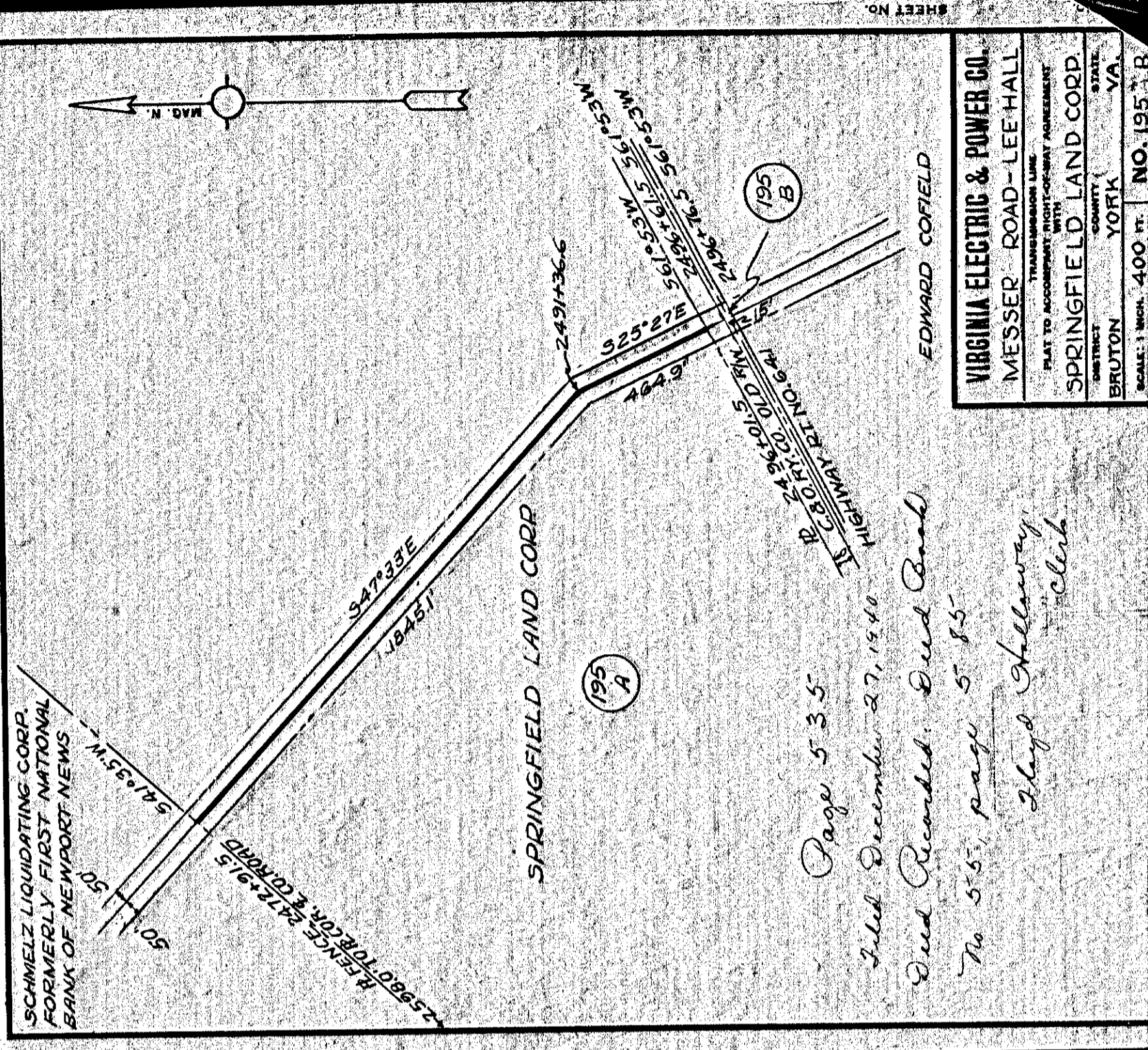


Page 533
 Filed December 27, 1940
 Deed Recorded. Deed
 Book No. 55, page 581
 Floyd Holloway
 Clerk

VIRGINIA ELECTRIC & POWER CO.	
MESSER ROAD - LEE HALL	
PLAT TO ACCOMPANY RIGHT-OF-WAY AGREEMENT	
TRANSMISSION LINE	
DISTRICT	MRS. DAISY L. LEWIS
COUNTY	YORK
STATE	VA
BRUTON	
SCALE: 1 INCH = 400 FT.	NO. 192
DATE: OCT. 1940	SUBMITTED BY
	STONE & WEBSTER ENG. CORP.

533

535



Page 535
 Filed December 27, 1940
 Deed Recorded. Deed Book
 No. 55, page 585
 Floyd Holloway
 Clerk

VIRGINIA ELECTRIC & POWER CO.	
MESSER ROAD - LEE HALL	
PLAT TO ACCOMPANY RIGHT-OF-WAY AGREEMENT	
TRANSMISSION LINE	
DISTRICT	SPRINGFIELD LAND CORP
COUNTY	YORK
STATE	VA
BRUTON	
SCALE: 1 INCH = 400 FT.	NO. 195
DATE: OCT. 1940	SUBMITTED BY
	STONE & WEBSTER ENG. CORP.

SHEET NO.

DRAWER NO.