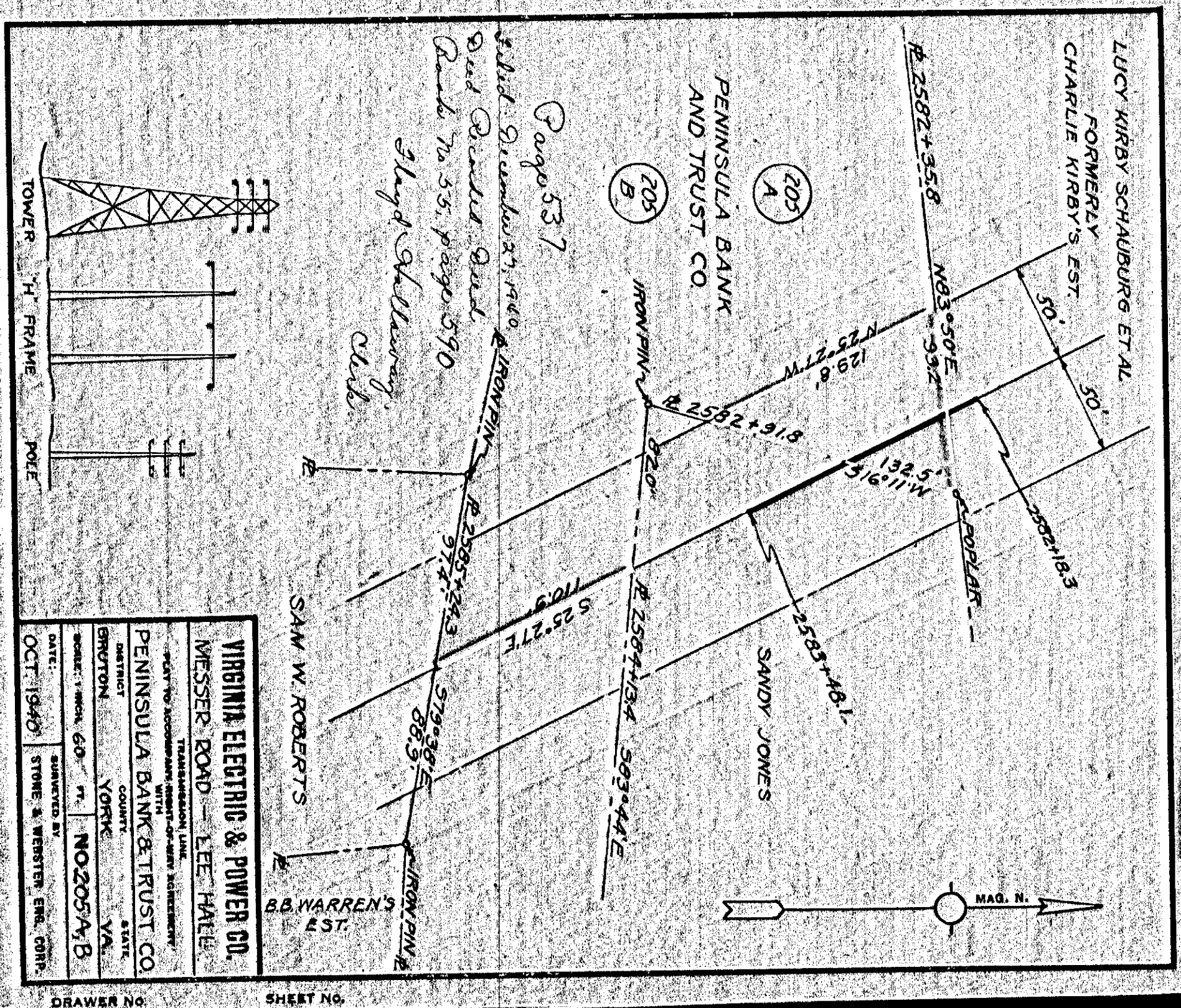


VIRGINIA ELECTRIC & POWER CO.  
 MESSER ROAD - LEE HALL  
 TRANSMISSION LINE  
 PLAT TO ACCOMPANY WITH  
 SPRINGFIELD, LAND CORP.  
 DISTRICT COUNTY STATE  
 BRUTON YORK VA.  
 SCALE: 1 INCH = 400 FT. NO. 198 B  
 DATE: SEPT. 1940 SUBMITTED BY STONE & WEBSTER, ENR., CONR.

DRAWER NO. SHEET NO.



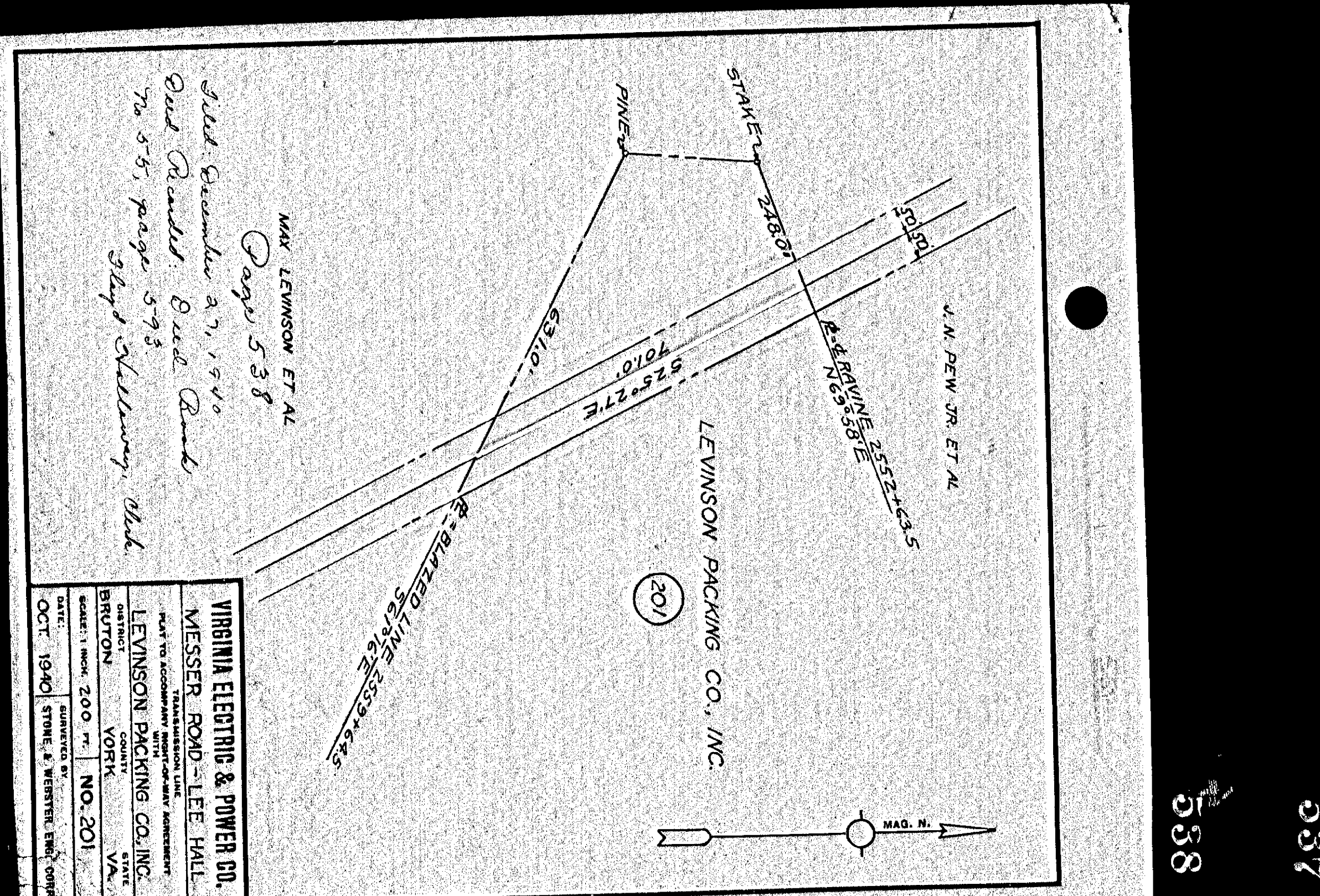
VIRGINIA ELECTRIC & POWER CO.  
 MESSER ROAD - LEE HALL  
 TRANSMISSION LINE  
 PLAT TO ACCOMPANY WITH  
 PENINSULA BANK & TRUST CO.  
 DISTRICT COUNTY STATE  
 BRUTON YORK VA.  
 SCALE: 1 INCH = 60 FT. NO. 205 A, B  
 DATE: OCT. 1940 SUBMITTED BY STONE & WEBSTER, ENR., CONR.

DRAWER NO. SHEET NO.



VIRGINIA ELECTRIC & POWER CO.  
 MESSER ROAD - LEE HALL  
 TRANSMISSION LINE  
 PLAT TO ACCOMPANY WITH  
 LEVINSON PACKING CO., INC.  
 DISTRICT COUNTY STATE  
 BRUTON YORK VA.  
 SCALE: 1 INCH = 200 FT. NO. 201  
 DATE: OCT. 1940 SUBMITTED BY STONE & WEBSTER, ENR., CONR.

DRAWER NO. SHEET NO.



VIRGINIA ELECTRIC & POWER CO.  
 MESSER ROAD - LEE HALL  
 TRANSMISSION LINE  
 PLAT TO ACCOMPANY WITH  
 LEVINSON PACKING CO., INC.  
 DISTRICT COUNTY STATE  
 BRUTON YORK VA.  
 SCALE: 1 INCH = 200 FT. NO. 201  
 DATE: OCT. 1940 SUBMITTED BY STONE & WEBSTER, ENR., CONR.

DRAWER NO. SHEET NO.

536

538

537