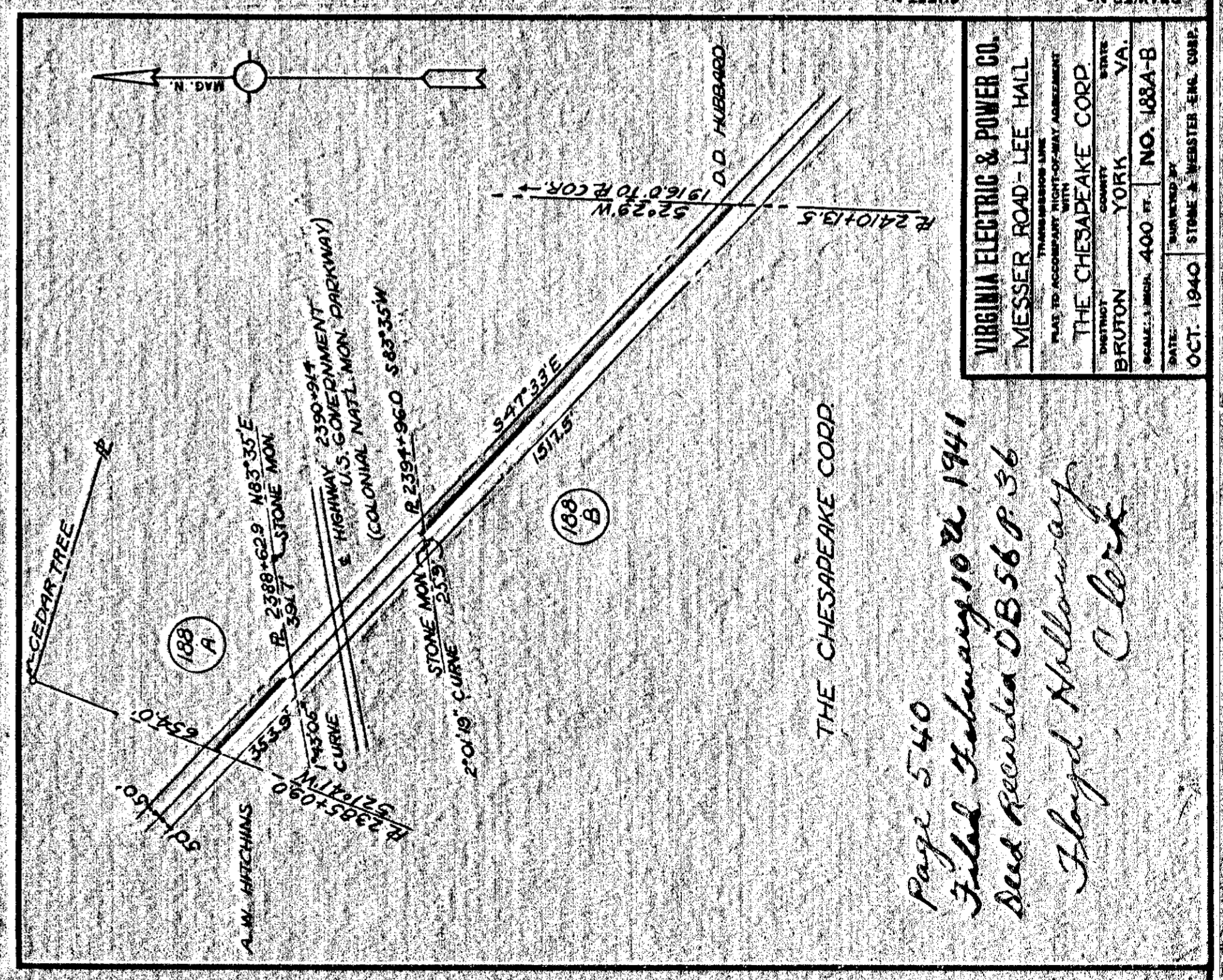


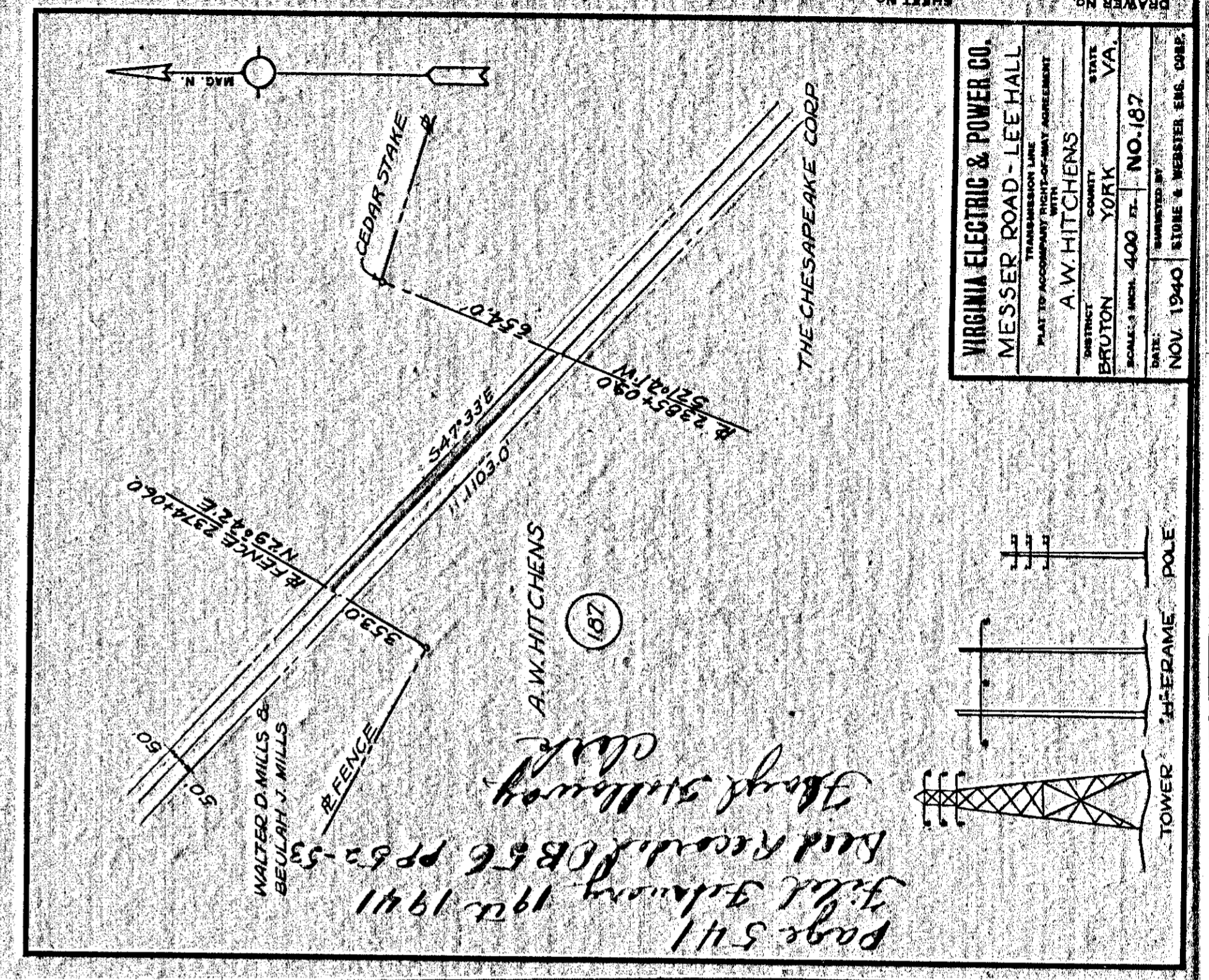
*Page 539  
Filed Feb 1 1941  
Deed recorded in DB  
# 56 page 81 x 42  
Floyd Holloway Clerk*

539

540



VIRGINIA ELECTRIC & POWER CO.	
MESSER ROAD - LEE HALL	
TRANSMISSION LINE	
PLAT TO ACCOMPANY WITH DEED OF ACQUISITION	
THE CHESAPEAKE CORP.	STATE
BRUTON	YORK
SCALE: 1" = 400 FT.	NO. 188A-B
DATE: OCT. 1940	SURVEYED BY: STONE & WEBSTER ENGR. CORP.



VIRGINIA ELECTRIC & POWER CO.	
MESSER ROAD - LEE HALL	
TRANSMISSION LINE	
PLAT TO ACCOMPANY WITH DEED OF ACQUISITION	
THE CHESAPEAKE CORP.	STATE
BRUTON	YORK
SCALE: 1" = 400 FT.	NO. 187
DATE: NOV. 1940	SURVEYED BY: STONE & WEBSTER ENGR. CORP.

541